

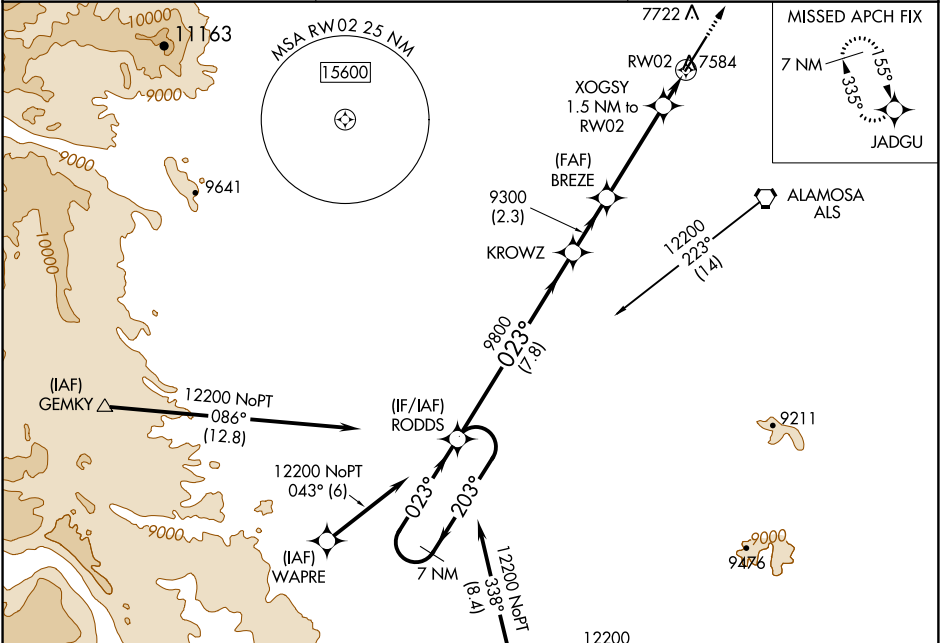
WAAS CH <b>90410</b> <b>W02A</b>	APP CRS <b>023°</b>	Rwy Idg TDZE <b>7539</b> Apt Elev <b>7539</b>
--	------------------------	---

# RNAV (GPS) RWY 2

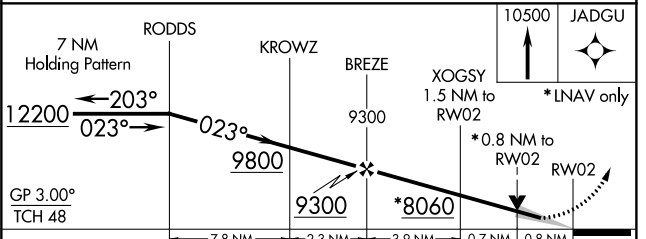
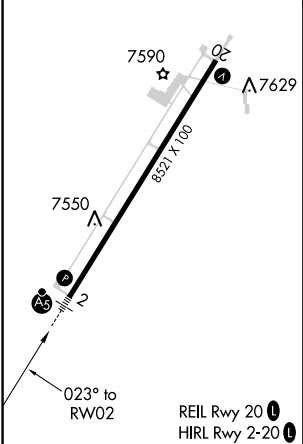
SAN LUIS VALLEY RGNL/BERGMAN FIELD (ALS)

<p><b>▼</b> For uncompensated Baro-VNAV systems, LNAV/VNAV NA below -29°C (-20°F) or above 44°C (111°F). DME/DME RNP -0.3 NA. For inop ALS, increase LNAV/VNAV all Cats visibility to ¾ SM and LNAV Cats C/D visibility to 7/8 SM.</p>	<p>MALSR</p>	<p>MISSED APPROACH: Climb to 10500 direct JADGU and hold.</p>
--	--------------	---

AWOS-3 <b>135.175</b>	DENVER CENTER <b>128.375 379.95</b>	UNICOM <b>122.8 (CTAF)</b>
--------------------------	--	-------------------------------



ELEV 7539	<b>D</b>	TDZE 7539
7607 ± Δ		



CATEGORY	A	B	C	D
LPV DA		7739-½	200 (200-½)	
LNAV/VNAV DA		7789-½	250 (300-½)	
LNAV MDA		7840-½	301 (400-½)	
<b>CIRCLING</b>	8040-1	501 (600-1)	8080-1½ 541 (600-1½)	8100-2 561 (600-2)

SW-1, 12 SEP 2019 to 10 OCT 2019

SW-1, 12 SEP 2019 to 10 OCT 2019