

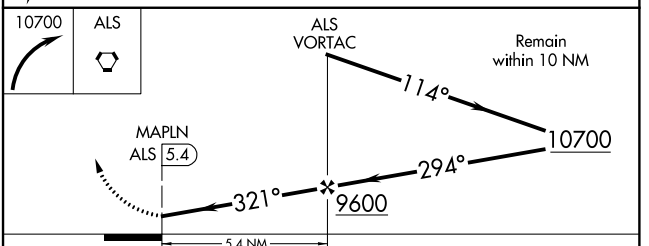
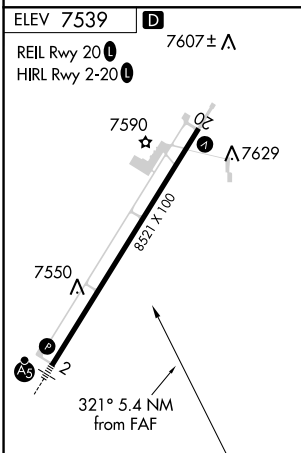
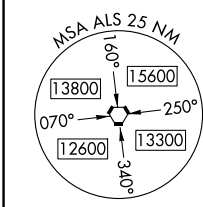
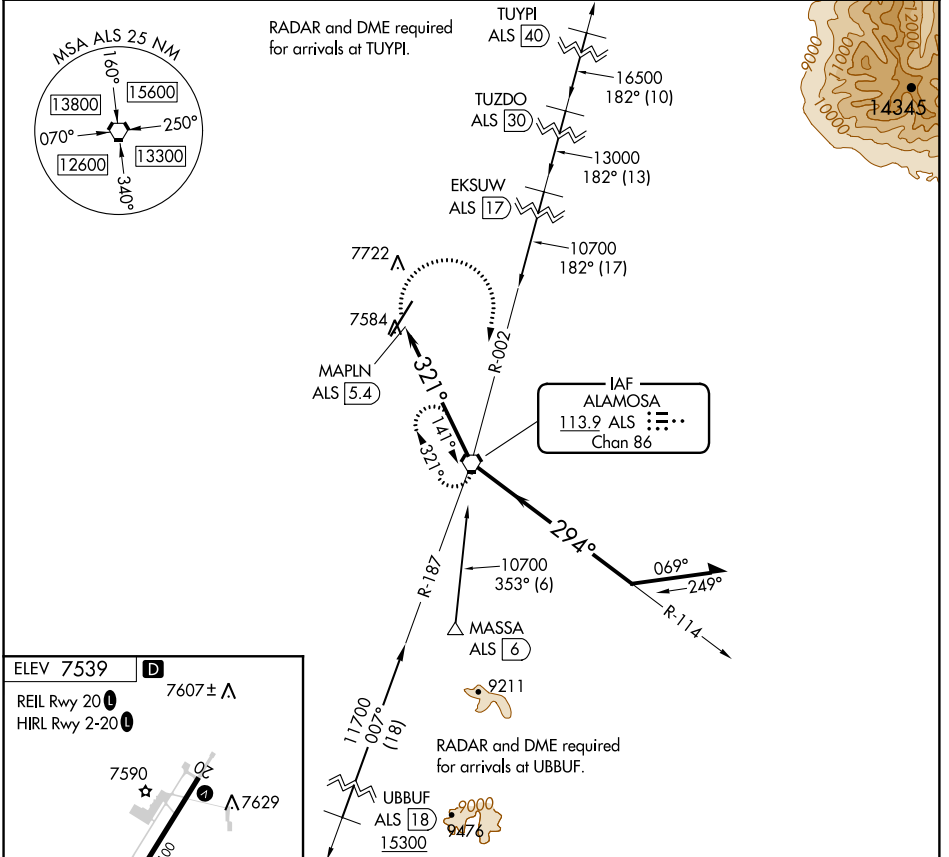
VORTAC ALS <b>113.9</b> Chan <b>86</b>	APP CRS <b>321°</b>	Rwy Idg TDZE Apt Elev <b>N/A</b> <b>N/A</b> <b>7539</b>
--	------------------------	--

# VOR-A

SAN LUIS VALLEY RGNL/BERGMAN FIELD (ALS)

**NA** When local altimeter setting not received, procedure NA. MISSED APPROACH: Climbing right turn to 10700 direct ALS VORTAC and hold, continue climb-in-hold to 10700.

AWOS-3 <b>135.175</b>	DENVER CENTER <b>128.375 379.95</b>	UNICOM <b>122.8 (CTAF)</b>
--------------------------	--	-------------------------------



FAF to MAPLN 5.4 NM		CATEGORY	A	B	C	D
Knots	60 90 120 150 180	<input checked="" type="checkbox"/> CIRCLING	8040-1	501 (600-1)	8080-1½ 541 (600-1½)	8100-2 561 (600-2)
Min:Sec	5:24 3:36 2:42 2:10 1:48					

# VOR-A

SW-1, 12 SEP 2019 to 10 OCT 2019

SW-1, 12 SEP 2019 to 10 OCT 2019