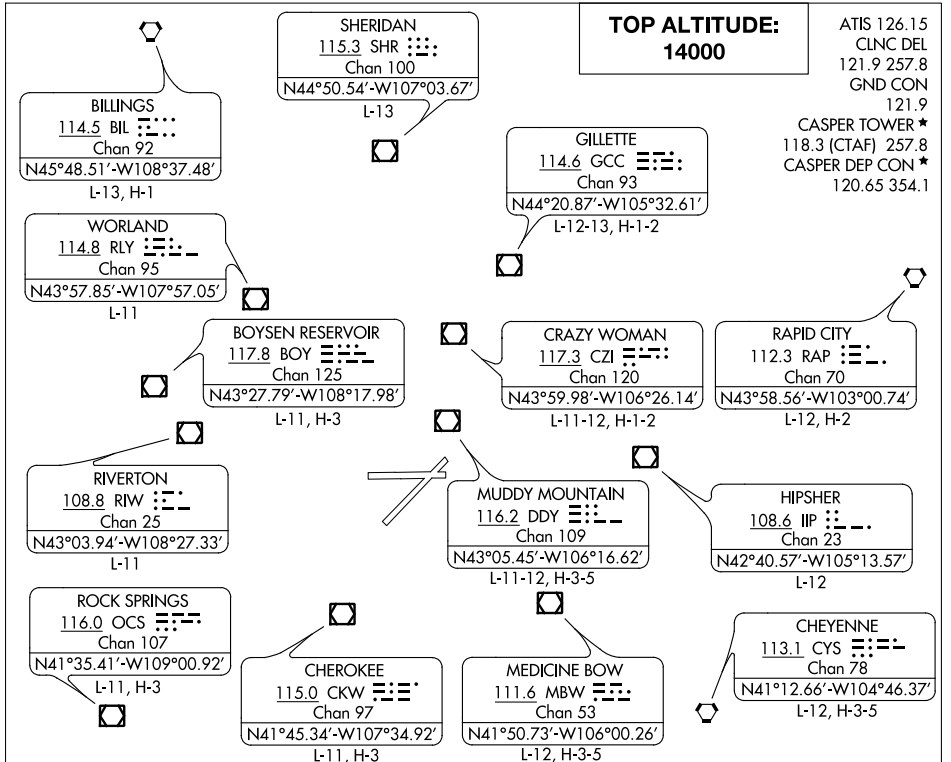


CASPER THREE DEPARTURE

SL-72 (FAA)

CASPER/NATRONA COUNTY INTL (CPR)

CASPER, WYOMING



ATIS 126.15
 CLNC DEL
 121.9 257.8
 GND CON
 121.9
 CASPER TOWER *
 118.3 (CTAF) 257.8
 CASPER DEP CON *
 120.65 354.1

TAKE-OFF MINIMUMS

Rwy 12, 17, 30, 35, NA- Environmental.

Rwy 3, 8, 26, Standard.

Rwy 21, Standard with a minimum climb of 235 feet per NM to 6700.

NOTE: RADAR required.

NOTE: Chart not to scale.

DEPARTURE ROUTE DESCRIPTION

TAKE-OFF RUNWAY 3: Climb on a heading between 212° CW 094° from DER as assigned by ATC thence . . .

TAKE-OFF RUNWAY 8: Climb on a heading between 257° CW 094° from DER as assigned by ATC thence . . .

TAKE-OFF RUNWAY 21: Climb on a heading between 195° CW 032° from DER as assigned by ATC thence . . .

TAKE-OFF RUNWAY 26: Climb on a heading between 190° CW 077° from DER as assigned by ATC thence . . .

. . . Maintain 14000' or assigned lower altitude. Expect RADAR vectors to filed/assigned fix/route. Expect further clearance to filed altitude ten minutes after departure.

LOST COMMUNICATIONS

If no transmissions are received for one minute after departure, maintain assigned heading until 7,000 feet, then climb to filed altitude via direct DDD VOR/DME, then via assigned route. Runways 3 and 8 turn left to DDD VOR/DME, runways 21 and 26 turn right to DDD VOR/DME.

CASPER THREE DEPARTURE

NW-1, 12 SEP 2019 to 10 OCT 2019

NW-1, 12 SEP 2019 to 10 OCT 2019