

WAAS CH <b>90105</b> <b>W21A</b>	APP CRS <b>206°</b>	Rwy Idg TDZE <b>1486</b> Apt Elev <b>1503</b>	<b>5465</b>
--	------------------------	---	-------------

# RNAV (GPS) RWY 21

ALTOONA-BLAIR COUNTY (A00)

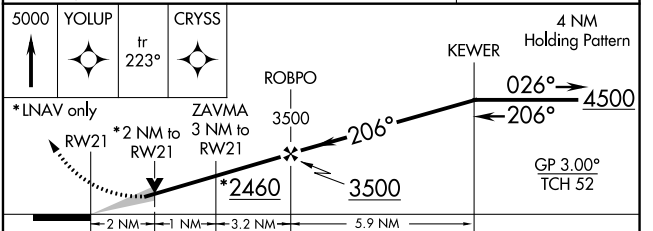
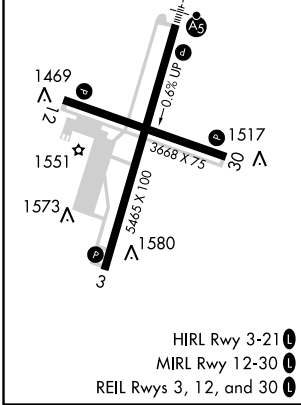
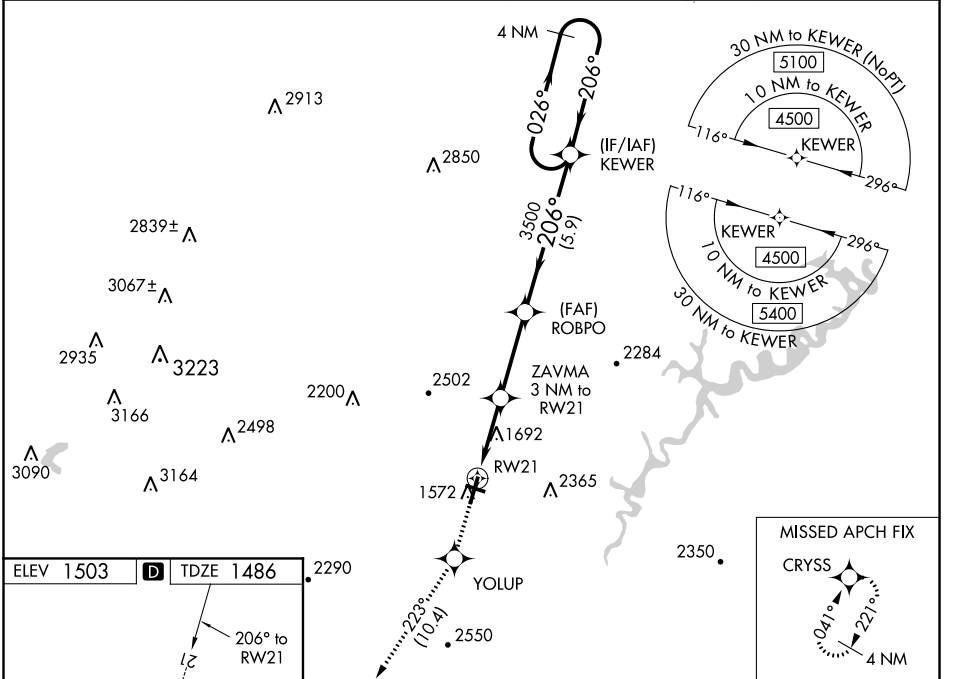
▼ Baro-VNAV NA when using Bedford County altimeter setting. For uncompensated Baro-VNAV systems, LNAV/VNAV NA below -17°C (2°F) or above 54°C (130°F). DME/DME RNP-0.3 NA.

▲ For inoperative MALSR, increase LPV visibility all Cats to 1½ mile. For inoperative MALSR when using Bedford County altimeter setting, increase LPV and LNAV/VNAV all Cats visibility to 2 miles and increase LNAV Cats C, D visibility to 2½ miles. When local altimeter setting not received, use Bedford County altimeter setting and increase all DA 84 feet, increase all MDA 100 feet, and increase all LPV and LNAV/VNAV visibilities ¾ mile, and LNAV Cats B, C and D ¼ miles. Circling Rwy 3, 12, 30 NA at night.

**MALSR**  
AS

**MISSED APPROACH:**  
Climb to 5000 direct YOLUP and on track 223° to CRYSS and hold, continue Climb-in-hold to 5000.

ASOS <b>127.125</b>	JOHNSTOWN APP CON * <b>121.2 299.2</b>	CTAF <b>123.60</b>	UNICOM <b>123.0</b>
------------------------	---	-----------------------	------------------------



CATEGORY	A	B	C	D
LPV DA		1977-1½	491 (500-1½)	
LNAV/VNAV DA		1999-1¼	513 (500-1¼)	
LNAV MDA	2160-½	674 (700-½)	2160-½	674 (700-½)
CIRCLING	2160-1	657 (700-1)	2160-2 657 (700-2)	2620-3 1117 (1200-3)

NE-4, 12 SEP 2019 to 10 OCT 2019

NE-4, 12 SEP 2019 to 10 OCT 2019