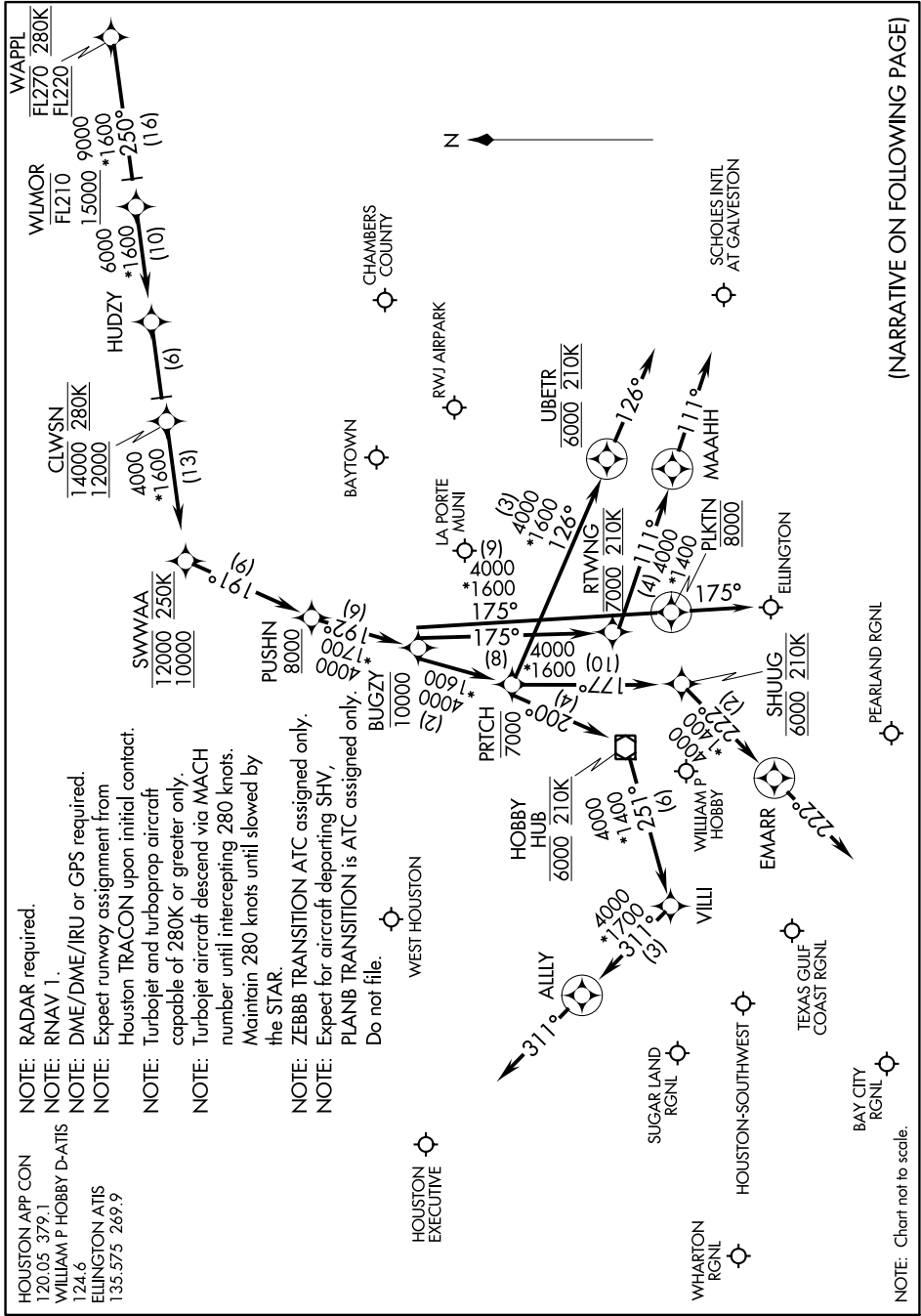


WAPPL FOUR ARRIVAL (RNAV) Arrival Routes

SC-5, 12 SEP 2019 to 10 OCT 2019

HOUSTON APP CON  
120.05 379.1  
WILLIAM P HOBBY D-ATIS  
124.6  
ELLINGTON ATIS  
135.575 269.9

- NOTE: RADAR required.
- NOTE: RNAV 1.
- NOTE: DME/DME/IRU or GPS required.
- NOTE: Expect runway assignment from Houston TRACON upon initial contact.
- NOTE: Turbopjet and turboprop aircraft capable of 280K or greater only.
- NOTE: Turbopjet aircraft descend via MACH number until intercepting 280 knots. Maintain 280 knots until slowed by the STAR.
- NOTE: ZEBBB TRANSITION ATC assigned only.
- NOTE: Expect for aircraft departing SHV, PLANB TRANSITION is ATC assigned only. Do not file.



NOTE: Chart not to scale.

(NARRATIVE ON FOLLOWING PAGE)

SC-5, 12 SEP 2019 to 10 OCT 2019

WAPPL FOUR ARRIVAL (RNAV) Arrival Routes