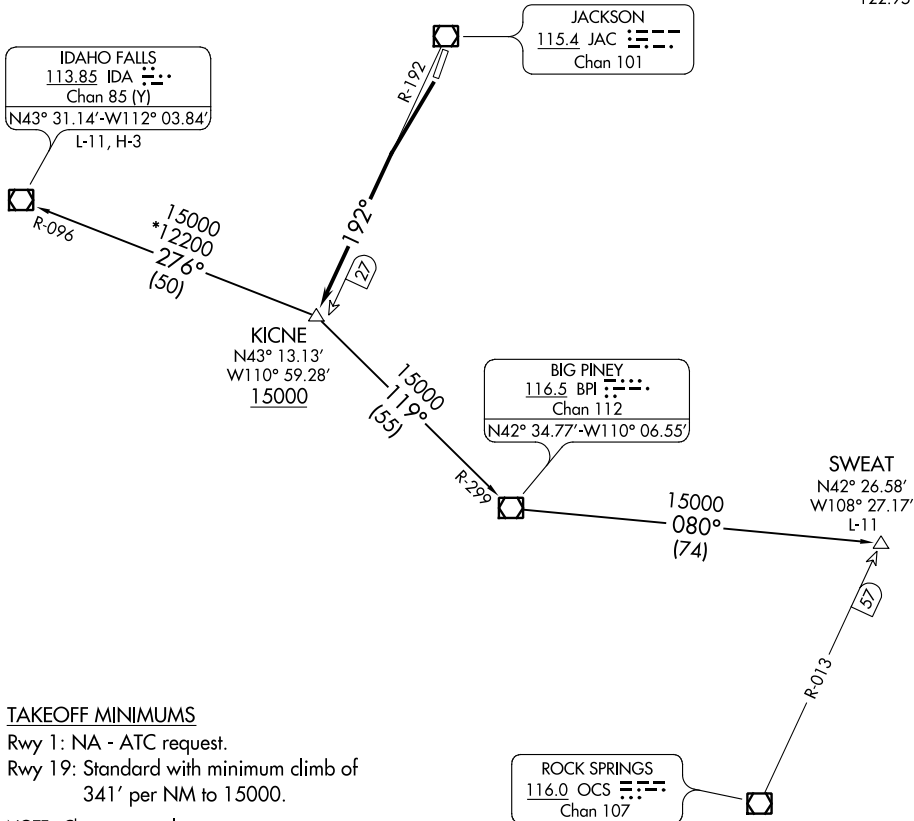


**TOP ALTITUDE:  
ASSIGNED BY ATC**

SALT LAKE CENTER  
133.25 285.6  
CTAF  
118.075  
UNICOM  
122.95



NW-1, 12 SEP 2019 to 10 OCT 2019

NW-1, 12 SEP 2019 to 10 OCT 2019

**TAKEOFF MINIMUMS**

Rwy 1: NA - ATC request.  
Rwy 19: Standard with minimum climb of 341' per NM to 15000.

NOTE: Chart not to scale.

**DEPARTURE ROUTE DESCRIPTION**

**TAKEOFF RUNWAY 19:** Climb via JAC R-192 to cross KICNE INT/JAC 27 DME at or above 15000. Thence. . . .

. . . .via (transition) or (assigned route). Expect further clearance to filed altitude 10 minutes after departure.

**IDAHO FALLS TRANSITION (ALPIN2.IDA):** From over KICNE INT via IDA R-096 to IDA VOR/DME.

**SWEAT TRANSITION (ALPIN2.SWEAT):** From over KICNE INT via BPI R-299 to BPI VOR/DME, then via BPI R-080 to SWEAT INT.