

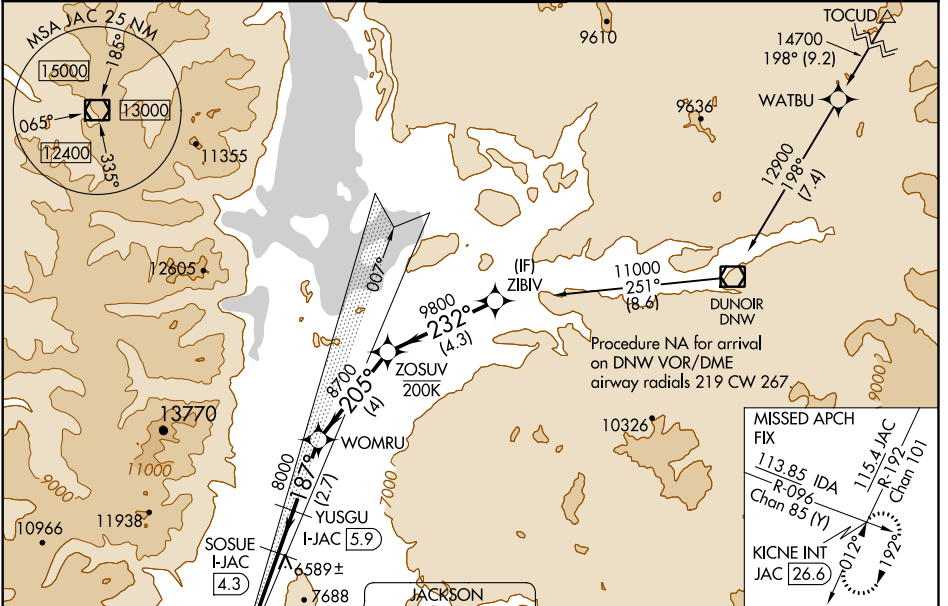
LOC/DME I-JAC <b>109.1</b> Chan 28	APP CRS <b>187°</b>	Rwy Idg TDZE Apt Elev	<b>6300</b> <b>6451</b> <b>6451</b>
--	------------------------	-----------------------------	---

# ILS Z or LOC Z RWY 19

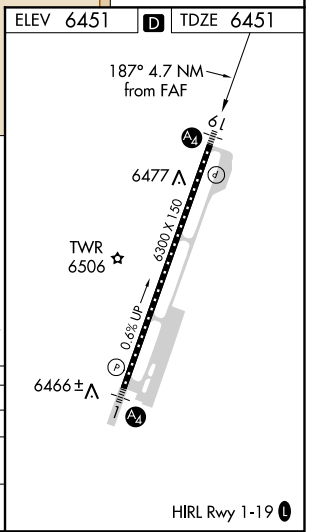
JACKSON HOLE (JAC)

RNAV 1-GPS Required. DME required for LOC only.	MALS 	MISSED APPROACH: Climb to 6900 then climbing right turn to 14000 on JAC VOR/DME R-192 to KICNE INT/JAC 26.6 DME and hold, continue climb-in-hold to 14000. #MISSED approach requires minimum climb of 235 feet per NM to 10600.
<p> Circling NA east of Rwy 1-19.</p> <p> For inop ALS, increase S-LOC 19# Cat A/B RVR to 5500 and Cat C/D RVR to 6000.</p> <p> -26°C Inop table does not apply to S-ILS 19#.</p>		

ATIS* <b>120.625</b>	SALT LAKE CENTER <b>133.25 285.6</b>	JACKSON TOWER* <b>118.075 (CTAF)</b>	GND CON <b>124.55</b>	UNICOM <b>122.95</b>
-------------------------	---	---	--------------------------	-------------------------



ELEV 6451		TDZE 6451
-----------	--	-----------



6900	14000	Use I-JAC DME when on the localizer course.				
	JAC R-192	KICNE INT	YUSGU I-JAC 5.9	WOMRU	ZOSUV	ZIBIV
*LOC only	SOSUE I-JAC 4.3	8000	8700	9800	11000	
	I-JAC 2.3	I-JAC 1.2	*7480	8000	187°	205°
					232°	11000
						GS 3.00°
						TCH 50

CATEGORY	A	B	C	D
S-ILS 19 #	6651/40			
S-LOC 19 #	6840/40	389 (400-3/4)	6840/45	389 (400-7/8)
CIRCLING	6840-1 389 (400-1)	6920-1 469 (500-1)	6920-1 1/2 469 (500-1 1/2)	7080-2 629 (700-2)

NW-1, 12 SEP 2019 to 10 OCT 2019

NW-1, 12 SEP 2019 to 10 OCT 2019