

WAAS CH 90232 W19A	APP CRS 187°	Rwy Idg TDZE Apr Elev	6300 6451 6451
--	------------------------	-----------------------------	---

RNAV (GPS) Z RWY 19

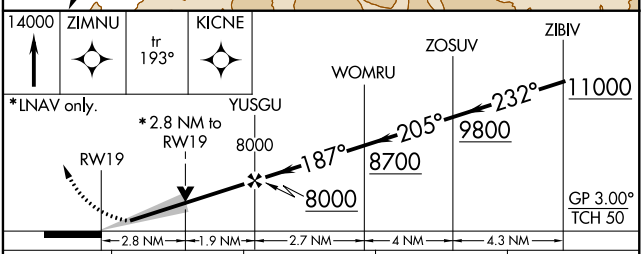
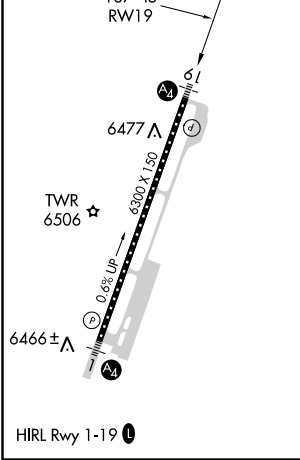
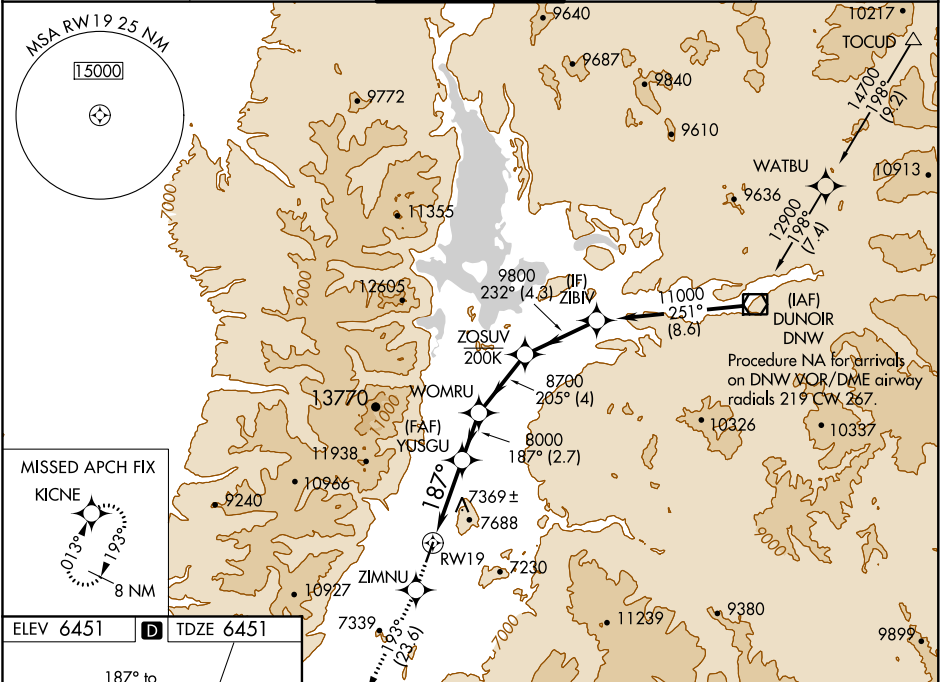
JACKSON HOLE (JAC)

RNP APCH.

Inop table does not apply to #LPV all Cats and LNAV Cats C and D. When local altimeter setting not received, procedure NA. For inop ALS, increase LPV visibility to 1 3/8 SM. Circling NA east of Rwy 1-19.
Missed approach requires a minimum climb of 235 feet per NM to 9200.

MALS
MISSED APPROACH: Climb to 14000 direct ZIMNU and on track 193° to KICNE and hold, continue climb-in-hold to 14000.

ATIS★ 120.625	SALT LAKE CENTER 133.25 285.6	JACKSON TOWER★ 118.075 (CTAF) 0	GND CON 124.55	UNICOM 122.95
-------------------------	---	---	--------------------------	-------------------------



CATEGORY	A	B	C	D
LPV DA#		6651/40	200 (200-3/4)	
LPV DA		6908/55	457 (500-1)	
LNAV MDA	7380/55	929 (1000-1)	7380-2 1/2	929 (1000-2 1/2)
CIRCLING	7380-1 1/4	929 (1000-1 1/4)	7380-2 3/4	7380-3
			929 (1000-2 3/4)	929 (1000-3)

NW-1, 12 SEP 2019 to 10 OCT 2019

NW-1, 12 SEP 2019 to 10 OCT 2019