

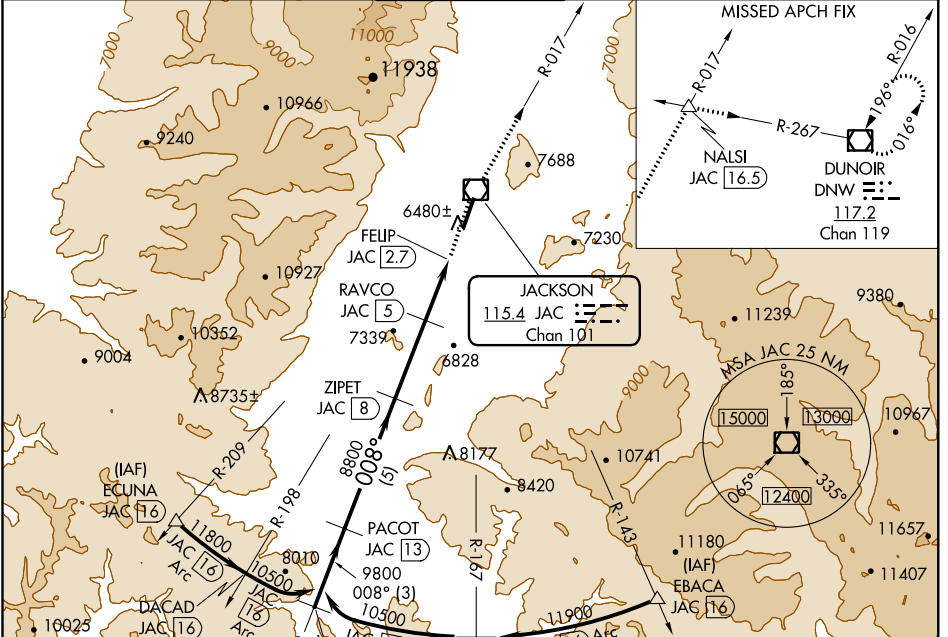
VOR/DME JAC 115.4 Chan 101	APP CRS 008°	Rwy Idg TDZE Apt Elev	6300 6431 6451
--	------------------------	-----------------------------	---

VOR/DME RWY 1

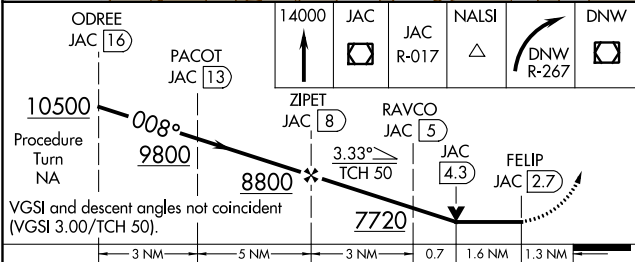
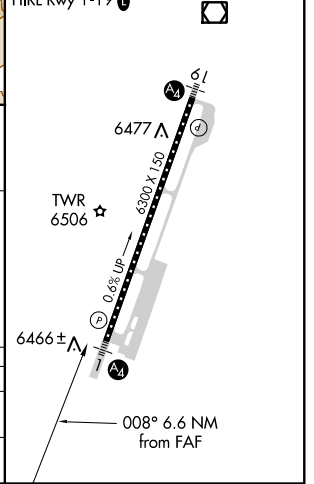
JACKSON HOLE (JAC)

⚠ ⚠ -26°C	Circling NA east of Rwy 1-19. Inoperative table does not apply. If local altimeter setting not received, procedure NA.	MALS — Ⓜ	MISSED APPROACH: Climb to 14000 direct JAC VOR/DME, and via JAC R-017 to NALSI Int/JAC 16.5 DME, and right turn via DNW R-267 to DNW VOR/DME and hold.
-------------------------------	--	-----------------------	--

ATIS* 120.625	SALT LAKE CENTER 133.25 285.6	JACKSON TOWER* 118.075 (CTAF) Ⓜ	GND CON 124.55	UNICOM 122.95
-------------------------	---	--	--------------------------	-------------------------



ELEV 6451	D TDZE 6431
-----------	--------------------



CATEGORY	A	B	C	D
S-1	7380-1½ 949 (1000-1½)		7380-2¾ 949 (1000-2¾)	7380-3 949 (1000-3)
CIRCLING	7380-1½ 929 (1000-1½)		7380-2¾ 929 (1000-2¾)	7380-3 929 (1000-3)

NW-1, 12 SEP 2019 to 10 OCT 2019

NW-1, 12 SEP 2019 to 10 OCT 2019