

LOC/DME I-LEI 108.5 Chan 22	APP CRS 234°	Rwy Idg 7500 TDZE 435 Apt Elev 435
-------------------------------------------------	------------------------	---------------------------------------------------------------

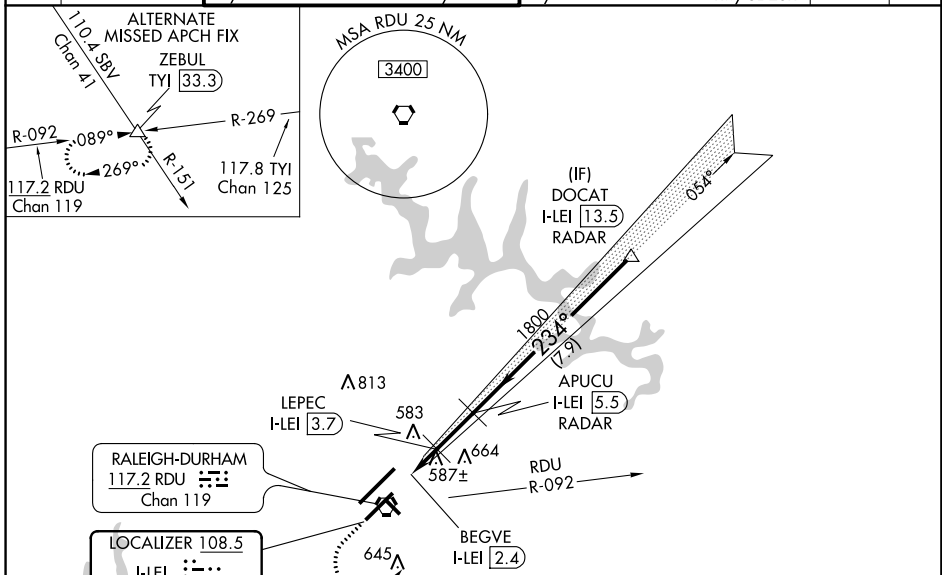
ILS or LOC RWY 23L

RALEIGH-DURHAM INTL (RDU)

RADAR required for procedure entry. DME required for LOC only.

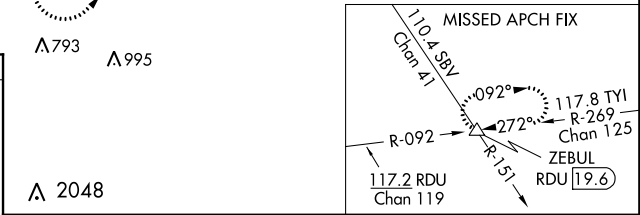
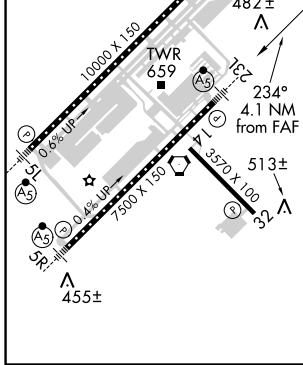
<p>Simultaneous approach authorized. For inop ALS, increase S-ILS 23L all Cats visibility to RVR 5500. For inop ALS, increase S-LOC-23L Cat C/D visibility to 2½ SM. Localizer unusable for coupled approaches below 1100 or within 2 NM of threshold.</p>	MALSR 	MISSED APPROACH: Climb to 1100 then climbing left turn to 2600 on heading 050° and RDU VORTAC R-092 to ZEBUL INT and hold.

D-ATIS 123.8	RALEIGH APP CON 128.3 307.9	(EAST) RALEIGH TOWER (WEST) 127.45 257.8 Rwys 5R-23L and 14-32	119.3 257.8 Rwy 5L-23R	(EAST) GND CON (WEST) 121.9 348.6 Rwys 5R-23L and 14-32	121.7 348.6 Rwy 5L-23R	CLNC DEL 120.1	CPDLC
------------------------	---------------------------------------	-----------------------------------------------------------------------------	----------------------------------	----------------------------------------------------------------------	----------------------------------	--------------------------	-------



ELEV 435	D	TDZE 435
-----------------	----------	-----------------

REIL Rwy 32
MIRL Rwy 14-32
HIRL Rwys 5R-23L and 5L-23R
TDZ/CL Rwys 23R, 23L and 5L



1100	2600	ZEBUL	APUCU I-LEI 5.5 RADAR	Localizer unusable from 1 NM from threshold.	DOCAT I-LEI 13.5 RADAR
↑	hdg 050°	RDU R-092	LEPEC I-LEI 3.7		
*LOC only.					
BEGVE I-LEI 2.4		1800		4000	
1200		1800		GS 3.00° TCH 56	
1 NM		1.3 NM		1.8 NM	
				7.9 NM	

CATEGORY	A	B	C	D
S-ILS 23L	806/35	371 (400-¾)		
S-LOC 23L	840/40	405 (500-¾)		
C CIRCLING	960-1¼	525 (600-1¼)	1040-1¾ 605 (700-1¾)	1180-2½ 745 (800-2½)