

LOC/DME I-DMP 111.7 Chan 54	APP CRS 234°	Rwy Idg TDZE Apt Elev 10000 409 435
---	------------------------	---

ILS or LOC RWY 23R

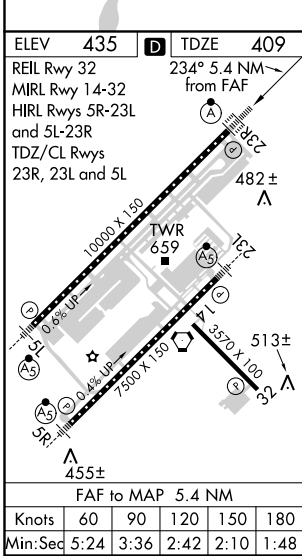
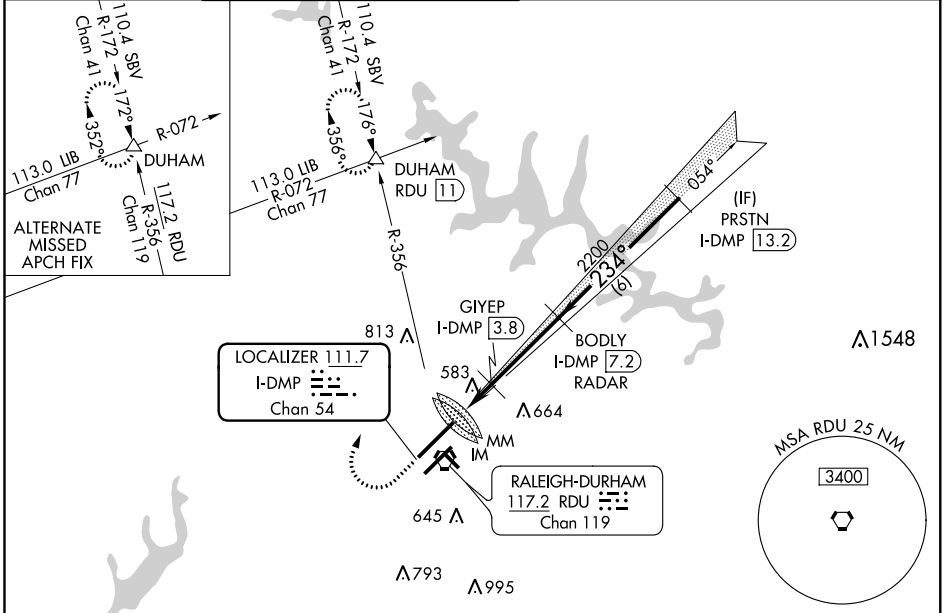
RALEIGH-DURHAM INTL (RDU)

RADAR required for procedure entry, DME or RADAR required. ALSF-2

MISSED APPROACH: Climb to 1000 then climbing right turn to 2200 on heading 030° and on RDU VORTAC R-356 to DUHAM INT/RDU 11 DME and hold.

Simultaneous approach authorized.

D-ATIS 123.8	RALEIGH APP CON 128.3 307.9	(EAST) RALEIGH TOWER (WEST) 127.45 257.8 119.3 257.8 Rwys 5R-23L and 14-32 Rwy 5L-23R	(EAST) GND CON (WEST) 121.9 348.6 121.7 348.6 Rwys 5R-23L and 14-32 Rwy 5L-23R	CLNC DEL 120.1	CPDLC
------------------------	---------------------------------------	---	--	--------------------------	-------



ELEV 435	TDZE 409	234° 5.4 NM from FAF
REIL Rwy 32	MIRL Rwy 14-32	HIRL Rwys 5R-23L and 5L-23R
TDZ/CL Rwys 23R, 23L and 5L		
FAF to MAP 5.4 NM		
Knots 60 90 120 150 180		
Min:Sec 5:24 3:36 2:42 2:10 1:48		

1000	2200	DUHAM	VGSI and ILS glidepath not coincident (VGSI Angle 3.00/TCH 69).
↑	hdg 030°	RDU R-356	BODLY I-DMP [7.2] RADAR
*LOC only.			
I-DMP [1.8]	*I-DMP [3.1]	GIEYEP I-DMP [3.8]	PRSTN I-DMP [13.2]
0.1 0.3 0.9 0.7	3.4 NM	6 NM	GS 3.00° TCH 56
CATEGORY	A	B	C
S-ILS 23R	609/18 200 (200-½)		
S-LOC 23R	1160/24 751 (800-½)	1160/40 751 (800-¾)	1160-1¾ 751 (800-1¾)
CIRCLING	1160-1 725 (800-1)	1160-1¼ 725 (800-1¼)	1160-2¼ 725 (800-2¼)
GIEYEP FIX MINIMUMS			
S-LOC 23R	900/24 491 (500-½)	900/40 491 (500-¾)	900/50 491 (500-1)
CIRCLING	960-1 525 (600-1)	1040-1¾ 605 (700-1¾)	1180-2½ 745 (800-2½)

SE-2, 12 SEP 2019 to 10 OCT 2019

SE-2, 12 SEP 2019 to 10 OCT 2019