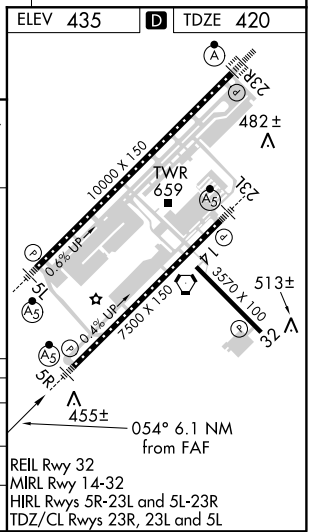
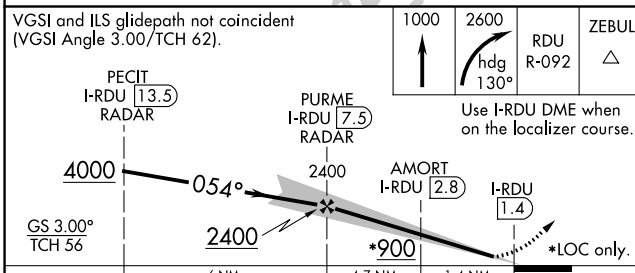
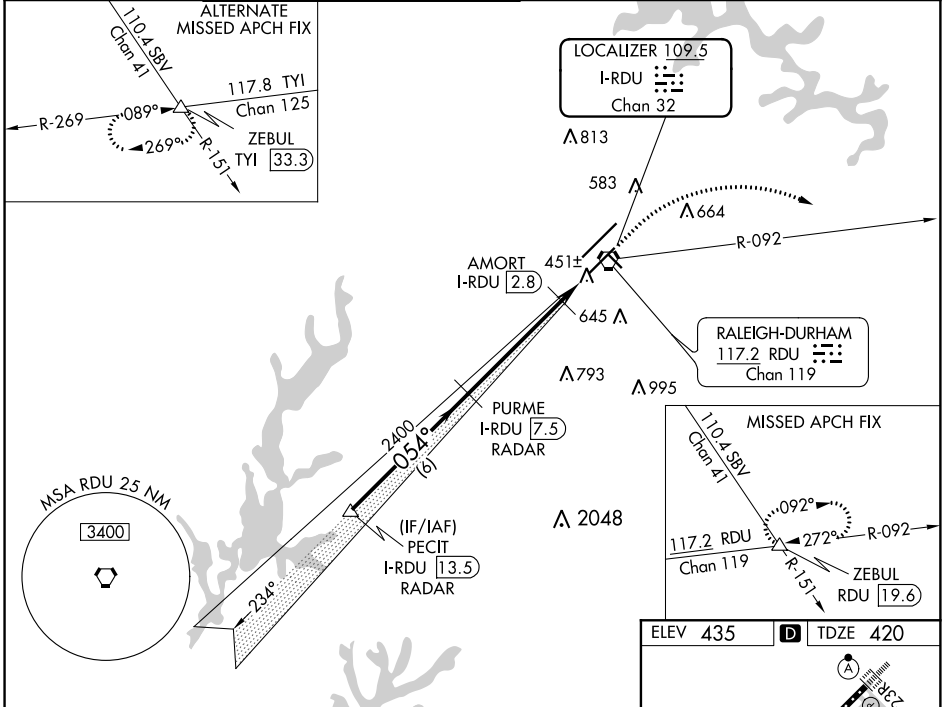


LOC/DME I-RDU 109.5 Chan 32	APP CRS 054°	Rwy Idg 7500 TDZE 420 Apt Elev 435
--	------------------------	---

ILS or LOC RWY 5R

RALEIGH-DURHAM INTL (RDU)

RADAR required for procedure entry. DME required for LOC only.		MALSR 		MISSED APPROACH: Climb to 1000 then dimbing right turn to 2600 on heading 130° and on RDU VORTAC R-092 to ZEBUL INT/RDU 19.6 DME and hold.	
Simultaneous approach authorized. # RVR 1800 authorized with use of FD or AP or HUD to DA.					
D-ATIS 123.8	RALEIGH APP CON 128.3 307.9	(EAST) RALEIGH TOWER (WEST) 127.45 257.8 Rwys 5R-23L and 14-32	(WEST) RALEIGH TOWER (EAST) 119.3 257.8 Rwy 5L-23R	(EAST) GND CON (WEST) 121.9 348.6 Rwys 5R-23L and 14-32	(WEST) GND CON (EAST) 121.7 348.6 Rwy 5L-23R
				CLNC DEL 120.1	CPDLC



SE-2, 12 SEP 2019 to 10 OCT 2019

SE-2, 12 SEP 2019 to 10 OCT 2019