

# RNAV (RNP) Z RWY 23R

RALEIGH-DURHAM INTL (RDU)

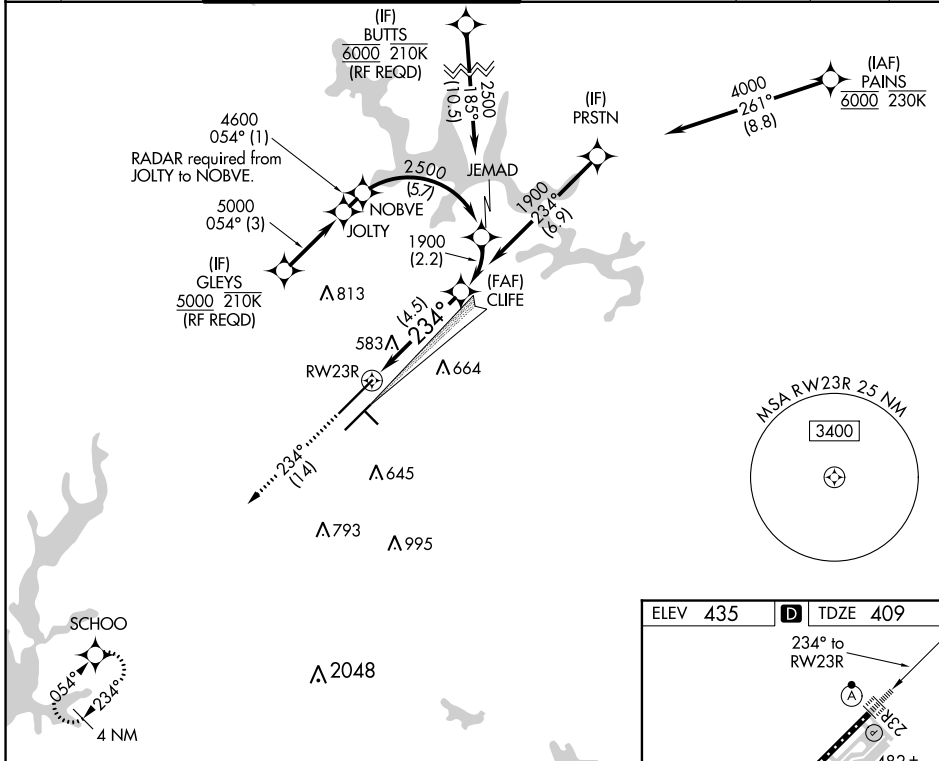
APP CRS	Rwy Idg	<b>10000</b>
<b>234°</b>	TDZE	<b>409</b>
	Apt Elev	<b>435</b>

RNP AR APCH, RF required.

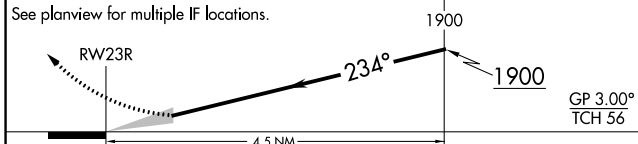
▼ For uncompensated Baro-VNAV systems, procedure NA below -9°C (16°F) or above 54°C (130°F). Use of FD or AP providing RNAV track guidance required during simultaneous operations. Simultaneous approach authorized with ILS or LOC RWY 23L, RNAV (GPS) Y RWY 23L, except for arrivals at GLEYS and BUTTS. For inop ALS, increase RNP 0.15 all Cats visibility to 1¼, increase RNP 0.30 all Cats visibility to 1½.

ALSIF-2	MISSED APPROACH:
	Climb to 3000 on track 234° to SCHOO and hold.

D-ATIS	RALEIGH APP CON	(EAST) RALEIGH TOWER (WEST)	(EAST) GND CON	(WEST)	CLNC DEL	CPDLC
<b>123.8</b>	<b>128.3 307.9</b>	<b>127.45 257.8</b> Rwys 5R-23L and 14-32	<b>119.3 257.8</b> Rwy 5L-23R	<b>121.9 348.6</b> Rwys 5R-23L and 14-32	<b>121.7 348.6</b> Rwy 5L-23R	<b>120.1</b>

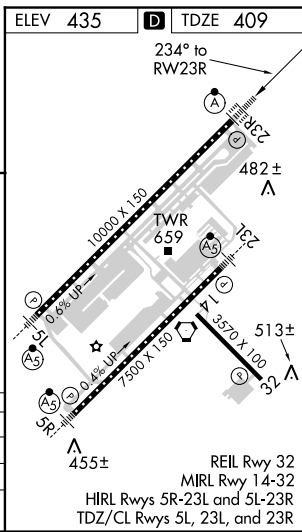


3000	SCHOO	VGSI and RNAV glidepath not coincident (VGSI Angle 3.00/TCH 69).
↑ tr 234°		



CATEGORY	A	B	C	D
RNP 0.15 DA	779/40		370 (400-¾)	
RNP 0.30 DA	978-1½		569 (600-1½)	

**AUTHORIZATION REQUIRED**



SE-2, 12 SEP 2019 to 10 OCT 2019

SE-2, 12 SEP 2019 to 10 OCT 2019