

WAAS CH 40341 W13A	APP CRS 128°	Rwy Idg TDZE Apt Elev	6901 1302 1302
--	------------------------	-----------------------------	---

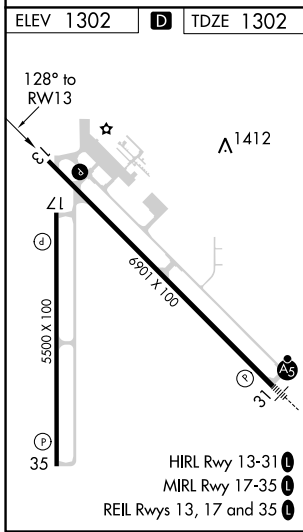
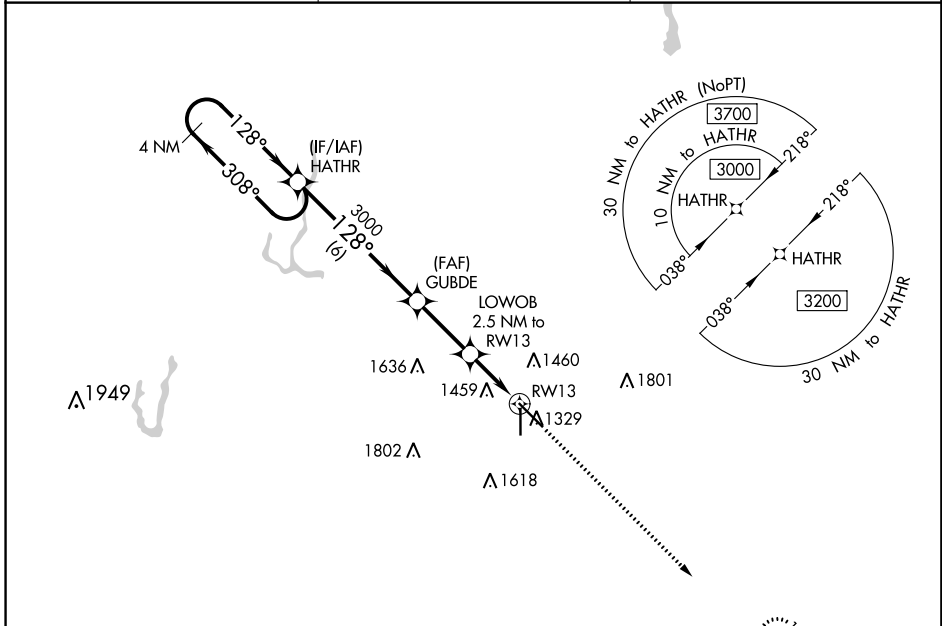
RNAV (GPS) RWY 13

ABERDEEN RGNL (ABR)

⚠ For uncompensated Baro-VNAV systems, LNAV/VNAV NA below -21°C (-5°F) or above 54°C (130°F).
DME/DME RNP-0.3 NA.

MISSED APPROACH: Climb to 3000 direct DOXCU and hold.

ASOS 125.875	MINNEAPOLIS CENTER 120.6 371.9	UNICOM 122.7 (CTAF) ①
------------------------	--	---------------------------------



	4 NM Holding Pattern	HATHR	GUBDE	3000	LOWOB 2.5 NM to RWY13	DOXCU
	3000	← 308°	→ 128°	→ 128°	→ 2140	→ 3000
	GP 3.00°	TCH 51			*1.1 NM to RWY13	
			6 NM	2.7 NM	1.4 NM	1.1 NM
CATEGORY	A	B	C	D		
LPV DA	1502- ³ / ₄		200 (200- ³ / ₄)			
LNAV/VNAV DA	1752-1 ³ / ₈		450 (500-1 ³ / ₈)			
LNAV MDA	1700-1	398 (400-1)	1700-1 ¹ / ₈	398 (400-1 ¹ / ₈)		
C CIRCLING	1760-1 458 (500-1)	1860-1 558 (600-1)	1960-1 ³ / ₄ 658 (700-1 ³ / ₄)	2160-2 ³ / ₄ 858 (900-2 ³ / ₄)		

NC-1, 12 SEP 2019 to 10 OCT 2019

NC-1, 12 SEP 2019 to 10 OCT 2019