

LOC I-FTY 109.1	APP CRS 085°	Rwy Idg TDZE Apt Elev	5797 808 841
---------------------------	------------------------	-----------------------------	---

ILS or LOC RWY 8

FULTON COUNTY AIRPORT-BROWN FIELD (F'TY)

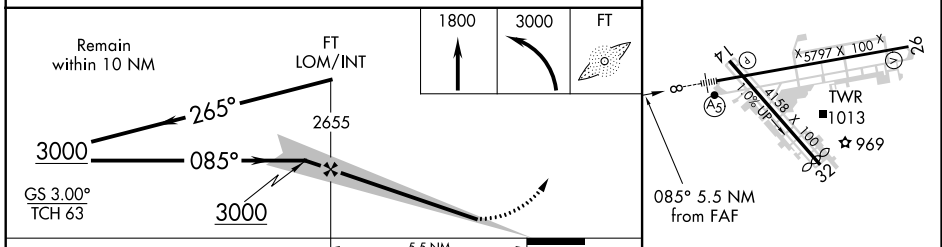
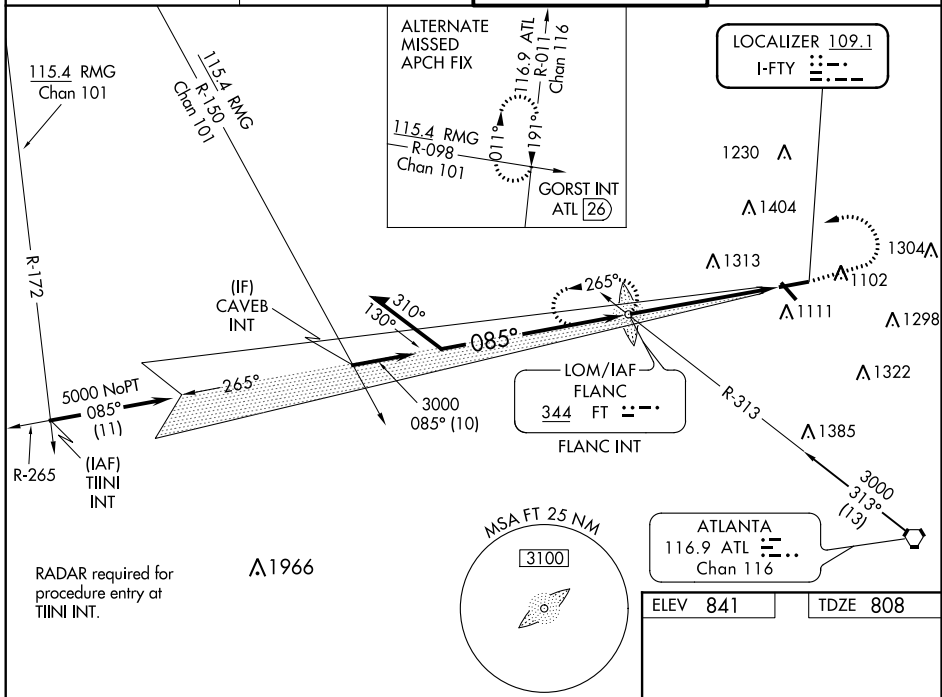
ADF required.

⚠ Circling Rwy 14, 32 NA at night. For inoperative ALS, increase S-LOC 8 Cat A visibility to 1 SM and Cat C/D visibility to 2½ SM. Rwy 8 helicopter visibility reduction below ¾ SM NA. Ridge with trees to 1299' MSL between outer marker and runway threshold may be obscured by clouds even with airfield ceiling at or above procedure minimums.

MALSR

MISSED APPROACH: Climb to 1800 then climbing left turn to 3000 direct FLANC LOM/Int and hold.

ATIS 120.175	ATLANTA APP CON 121.0 268.7	FULTON COUNTY TOWER 118.45 257.8	GND CON 121.7 348.6
------------------------	---------------------------------------	--	-------------------------------



ELEV 841	TDZE 808			
CATEGORY	A	B	C	D
S-ILS 8	1064-¾ 256 (300-¾)			
S-LOC 8	1640-¾	832 (800-¾)	1640-1⅞	832 (800-1⅞)
C CIRCLING	1640-1	799 (800-1)	1740-2¾ 899 (900-2¾)	1740-3 899 (900-3)
HIRL Rwy 8-26 MIRL Rwy 14-32 REIL Rws 14, 26 and 32 FAF to MAP 5.5 NM				
Knots 60 90 120 150 180 Min:Sec 5:30 3:40 2:45 2:12 1:50				

ILS or LOC RWY 8

SE-4, 12 SEP 2019 to 10 OCT 2019

SE-4, 12 SEP 2019 to 10 OCT 2019