

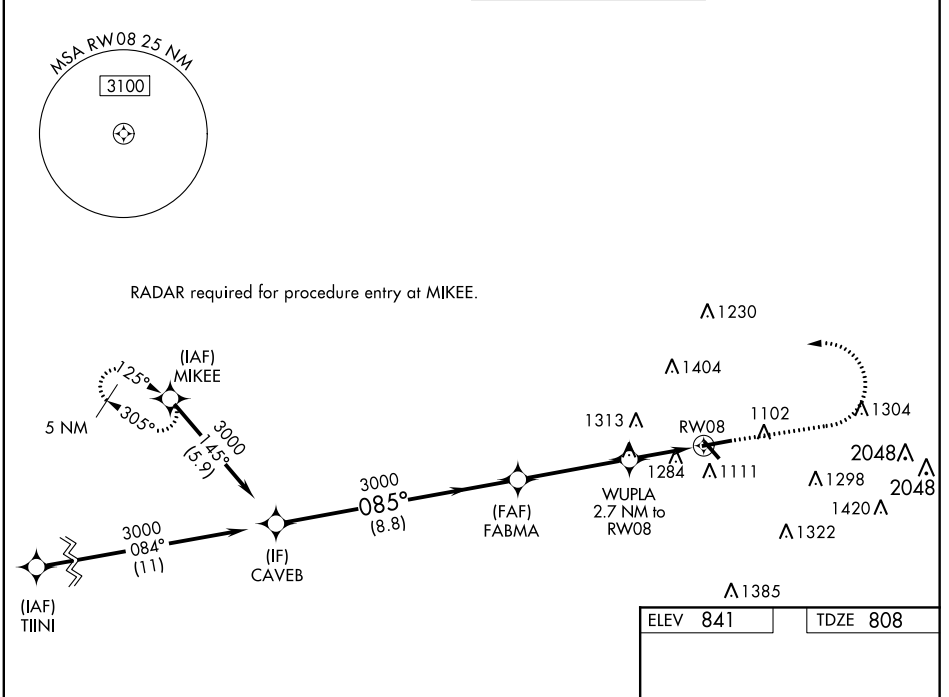
WAAS CH <b>65804</b> <b>W08A</b>	APP CRS <b>085°</b>	Rwy ldg TDZE Apt Elev	<b>5797</b> <b>808</b> <b>841</b>
--	------------------------	-----------------------------	---

# RNAV (GPS) Y RWY 8

FULTON COUNTY AIRPORT-BROWN FIELD (F'TY)

RNP APCH.	MALSR	MISSED APPROACH: Climb to 1600 then climbing left turn to 3000 direct MIKEE and hold.
<p>⚠ Circling Rwy 14, 32 NA at night. For uncompensated Baro-VNAV systems, LNAV/VNAV NA below -9°C (16°F) or above 54°C (130°F). Rwy 8 helicopter visibility reduction below ¾ SM NA. For inoperative ALS, increase LNAV Cat A/B visibility to 1 SM and Cat C/D to 2 SM. Inoperative table does not apply to LPV and LNAV/VNAV DA.</p>		

ATIS <b>120.175</b>	ATLANTA APP CON <b>121.0 268.7</b>	FULTON COUNTY TOWER <b>118.45 257.8</b>	GND CON <b>121.7 348.6</b>
------------------------	---------------------------------------	--	-------------------------------



CAVEB		FABMA	WUPLA 2.7 NM to RW08	MIKEE
3000		3000	*2.2 NM to RW08	*LNAV only
GP 3.00 TCH 50		*1700	RW08	
8.8 NM		4.1 NM	0.5	2.2 NM
CATEGORY	A	B	C	D
LPV DA		1058-¾	250 (300-¾)	
LNAV/VNAV DA		1653-2½	845 (900-2½)	
LNAV MDA	1540-¾	732 (800-¾)	1540-1⅝	732 (800-1⅝)
CIRCLING	1540-1	699 (700-1)	1740-2¾ 899 (900-2¾)	1740-3 899 (900-3)

ELEV 841	TDZE 808
----------	----------

085° to RW08

HIRL Rwy 8-26  
MIRL Rwy 14-32  
REIL Rwy 14, 26 and 32

SE-4, 12 SEP 2019 to 10 OCT 2019

SE-4, 12 SEP 2019 to 10 OCT 2019