

ATLANTA, GEORGIA

AL-745 (FAA)

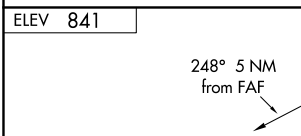
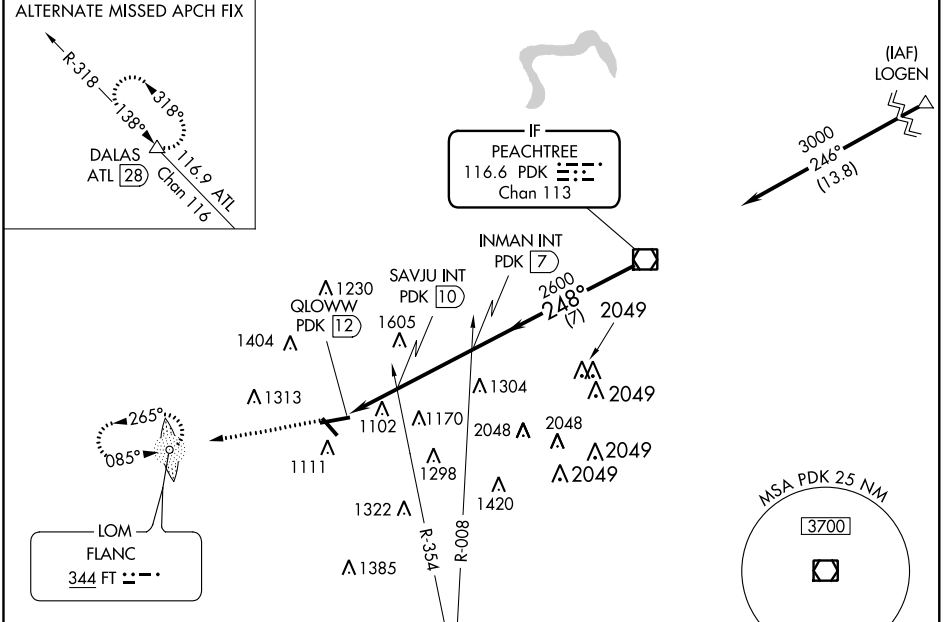
18312

VOR/DME PDK 116.6 Chan 113	APP CRS 248°	Rwy Idg TDZE Apt Elev	N/A N/A 841
--	------------------------	-----------------------------	--

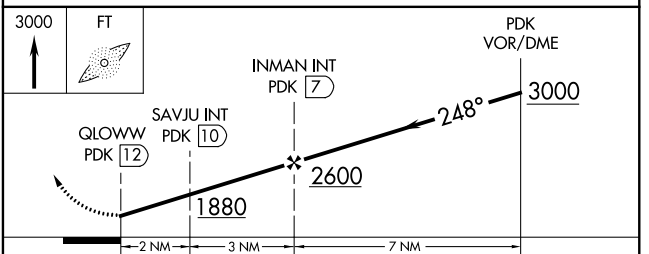
VOR-A

FULTON COUNTY AIRPORT-BROWN FIELD (F^TY)

ADF or RADAR required.		MISSED APPROACH: Climb to 3000 direct FLANC LOM and hold.	
<p>▼ Circling Rwy 14, 32 NA at night. ▲ Helicopter visibility reduction below 1 SM NA.</p>			
ATIS 120.175	ATLANTA APP CON 121.0 268.7	FULTON COUNTY TOWER 118.45 257.8	GND CON 121.7 348.6



ELEV 841	248° 5 NM from FAF
HIRL Rwy 8-26	MIRL Rwy 14-32
REIL Rwy 14, 26 and 32	FAF to MAP 5 NM
Knots	60 90 120 150 180
Min:Sec	5:00 3:20 2:30 2:00 1:40



CATEGORY	A	B	C	D
C CIRCLING	1880-1¼ 1039 (1100-1¼)	1880-1½ 1039 (1100-1½)	1880-3	1039 (1100-3)
SAVJU FIX MINIMUMS (DUAL VOR RECEIVERS OR DME REQUIRED)				
C CIRCLING	1480-1 639 (700-1)	1520-1 679 (700-1)	1740-2¾ 899 (900-2¾)	1740-3 899 (900-3)

ATLANTA, GEORGIA
Amdt 1C 08NOV18

FULTON COUNTY AIRPORT-BROWN FIELD (F^TY)
33°47'N-84°31'W

VOR-A

SE-4, 12 SEP 2019 to 10 OCT 2019

SE-4, 12 SEP 2019 to 10 OCT 2019