

ATHENS, GEORGIA

AL-983 (FAA)

19059

VOR/DME AHN 109.6 Chan 33	APP CRS 014°	Rwy Idg 3995 TDZE 805 Apt Elev 808
---	------------------------	---

VOR RWY 2

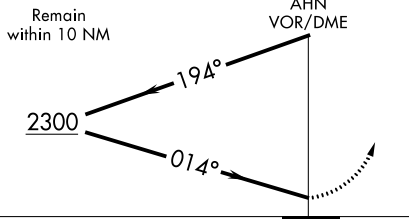
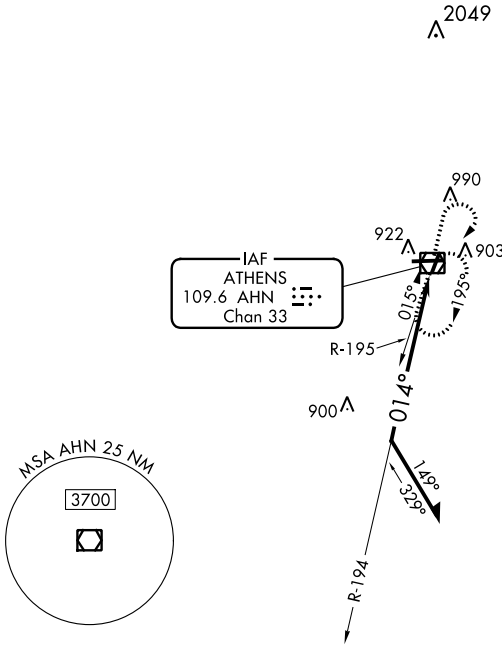
ATHENS/BEN EPPS (AHN)

⚠ When VGSI inop, Circling Rwy 20 NA at night. When VGSI inop, Straight-in/Circling Rwy 2 procedure NA at night. Visibility reduction by helicopters NA. When local altimeter setting not received, use Winder altimeter setting and increase all MDA 60 feet, and S-2 Cat D visibility ¼ mile.

MISSED APPROACH: Climb to 2100 then climbing right turn to 2300 direct AHN VOR/DME and hold.

ASOS 132.875	ATLANTA APP CON ★ 132.475 291.1 316.05	ATHENS TOWER ★ 126.3 (CTAF) 0 338.275	GND CON 121.8	CLNC DEL 121.8	CLNC DEL 132.475 291.1 316.05 (when tower closed)
------------------------	--	---	-------------------------	--------------------------	--

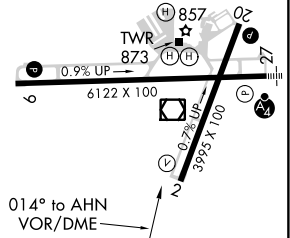
UNICOM
122.95



2100	2300	AHN
↑	↷	☐

ELEV 808	TDZE 805
----------	----------

MIRL Rwy 2-20
MIRL Rwy 9-27



CATEGORY	A	B	C	D
S-2	1220-1	415 (500-1)	1220-1¼	415 (500-1¼)
CIRCLING	1260-1	452 (500-1)	1260-1½	1360-2 452 (500-1½) 552 (600-2)

ATHENS, GEORGIA
Amdt 11C 15SEP16

33°57'N-83°20'W

ATHENS/BEN EPPS (AHN) VOR RWY 2

SE-4, 12 SEP 2019 to 10 OCT 2019

SE-4, 12 SEP 2019 to 10 OCT 2019