

APP CRS	Rwy Idg	<b>8457</b>
<b>070°</b>	TDZE	<b>25</b>
	Apt Elev	<b>26</b>

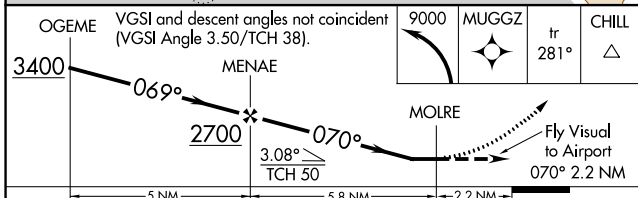
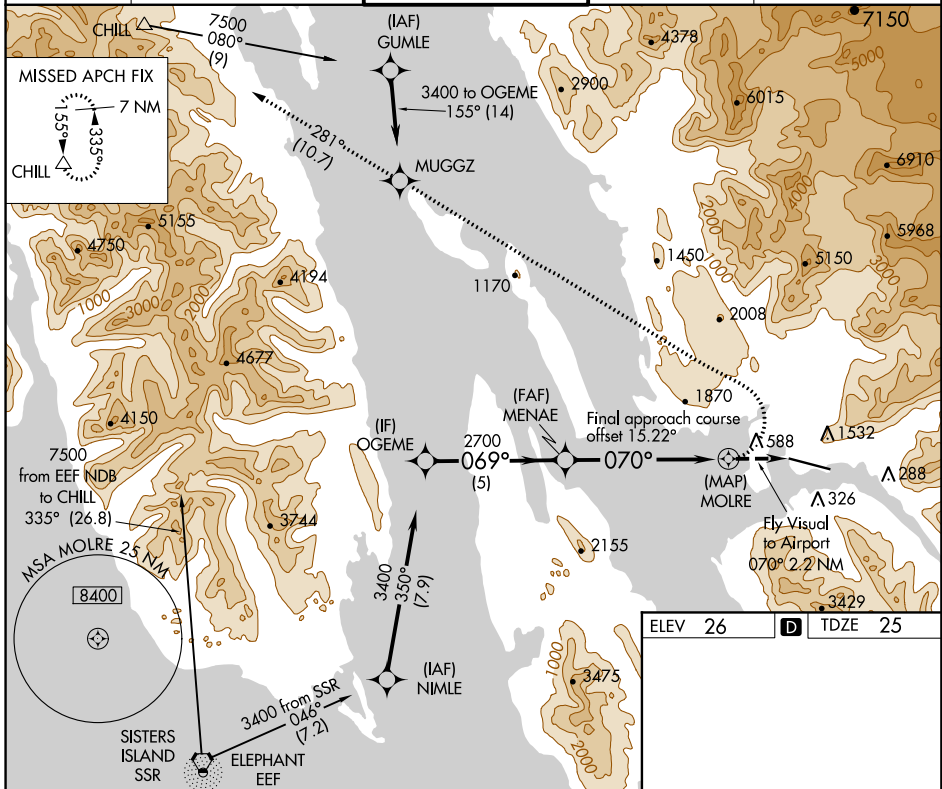
# RNAV (GPS) V RWY 8

JUNEAU INTL (JNU)(PAJN)

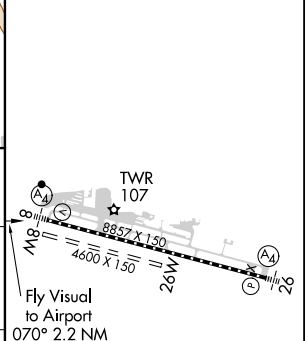
**⚠** Circling NA at night. When VGSi inop, procedure NA at night. Visibility reduction by helicopters NA. DME/DME RNP-0.3 NA. Lead-in lights not aligned with final approach course. For inop Lead-in lights, increase visibility to 4 NM. Circling NA north of Rwy 8-26.  
 \* Missed approach requires minimum climb of 363 feet per NM to 3200.

**MALSF**  
 MISSED APPROACH: Climbing left turn to 9000 direct MUGGZ and on track 281° to CHILL and hold, continue climb-in-hold to 9000.

ATIS <b>135.2</b>	ANCHORAGE CENTER <b>133.9</b>	JUNEAU TOWER * <b>118.7 (CTAF) 278.3</b>	GND CON <b>121.9</b>	JUNEAU RADIO <b>122.2</b>
----------------------	----------------------------------	---	-------------------------	------------------------------



ELEV 26	TDZE 25
---------	---------



CATEGORY	A	B	C	D
LNAV MDA*	1880-2	1855 (1900-2)		NA
LNAV MDA	2340-3	2315 (2400-3)		NA
<b>C</b> CIRCLING	2340-3	2314 (2400-3)		NA

RLS Rwy 8  
 REIL Rwy 8 and 26  
 HIRL Rwy 8-26

AK, 15 AUG 2019 to 10 OCT 2019

AK, 15 AUG 2019 to 10 OCT 2019