

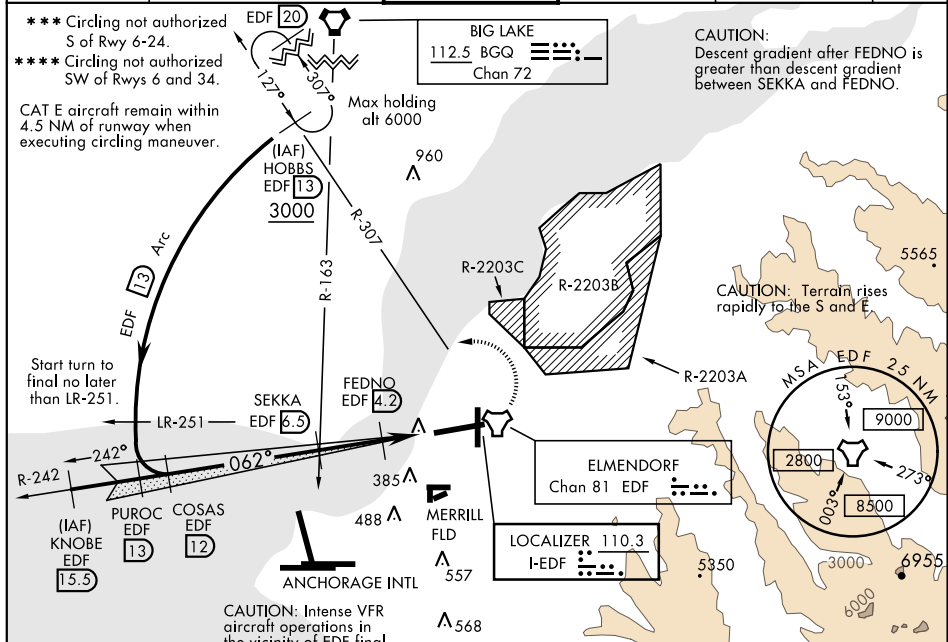
LOC I-EDF 110.3	APCH CRS 062°	Rwy Idg TDZE 174 Arpt Elev 213	AL-1196 [USAF]	ELMENDORF AFB (PAED)
---------------------------	-------------------------	--	----------------	----------------------

▽ * When ALS inop, increase RVR to 40, vis to ¾ mile.
****** When ALS inop, increase CAT AB RVR to 55, vis to 1 mile, CAT CDE vis to 1½ miles.

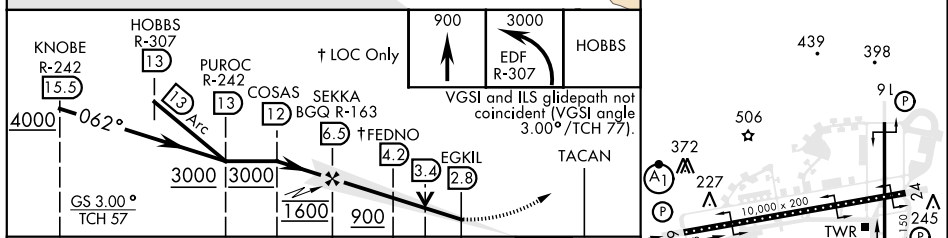
ALS F-1

MISSED APPROACH: Climb to 900, then climbing left turn to 3000 via EDF R-307 to HOBBS and hold.

ATIS * 124.3 273.5	ANCHORAGE APP CON North 118.6 290.5 South 123.8 259.3	ELMENDORF TOWER 127.2 352.05	GND CON 121.8 275.8	CLNC DEL 128.8 306.925	PAR
------------------------------	---	--	-------------------------------	----------------------------------	-----



EMERG SAFE ALT 100 NM 15,200	ELEV 213	TDZE 174
------------------------------	----------	----------



CATEGORY	A	B	C	D	E
S-ILS 6*	374/24		200	(200-½)	
S-LOC 6**	620/24	446 (500-½)	620/45		446 (500-¾)
CIRCLING ***	800-1	587 (600-1)	800-1½	800-2	940-2½
			587 (600-1½)	587 (600-2)	727 (800-2½)
RWY 34 CIRCLING MINIMUMS					
CIRCLING ****	800-1	587 (600-1)	920-2	920-2¼	1420-3
			707 (800-2)	707 (800-2¼)	1207 (1300-3)

TDZL/CL Rwy 6
 HIRL all Rwy

AK, 15 AUG 2019 to 10 OCT 2019

AK, 15 AUG 2019 to 10 OCT 2019