

ANCHORAGE, ALASKA

# RNAV (GPS) RWY 6

APCH CRS	Rwy Idg	10,000
062°	TDZE	175
	Arprt Elev	213

AL-1196 (USAF)

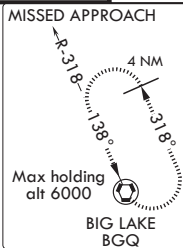
ELMENDORF AFB (PAED)

**V** \* When ALS inop increase vis to 1 3/8 miles.  
 \*\* When ALS inop increase CAT AB RVR to 55, vis to 1 mile, CAT CD vis to 1 3/8 miles.  
 \*\*\* Circling NA S of RWY 34 and 6.

**ALSF-1** MISSED APPROACH: Climb to 800 then climbing left turn to 3000 direct BGQ and hold.

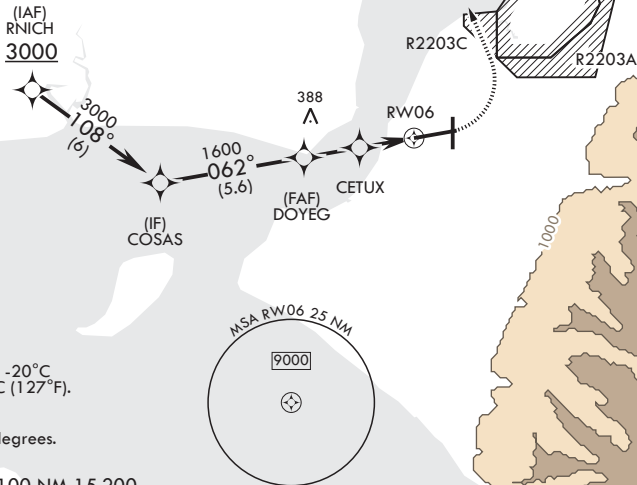
ATIS★	ANCHORAGE APP CON/DEP CON	TOWER	GND CON	CLNC DEL	ASR/PAR
124.3 273.5	118.6 290.5	127.2 352.05	121.8 275.8	128.8 306.925	

DME/DME RNP-0.3 NA  
 GPS REQUIRED  
 RNP APCH



CAUTION: Intense VFR aircraft in the vicinity of Final Approach.

CAUTION: Terrain rises rapidly to the South and East.

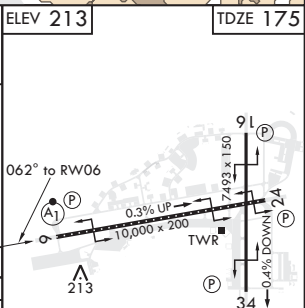


For uncompensated Baro-VNAV systems, Procedure NA below -20°C (-4°F) or above 53°C (127°F).

Course offset 0.04 degrees.

EMERG SAFE ALT 100 NM 15,200

RNICH	COSAS	VGSI and RNAV glidepath not coincident.	800	3000	BGQ	ELEV 213	TDZE 175
3000	3000	DOYEG	↑ RNAV only				
108°	062°	CETUX	1.2 NM to RWY 06				
GP 3.04° TCH 57	1600	900					
			2.1 NM	2.1 NM			
CATEGORY	A	B	C	D			
LNAV/VNAV DA*	605/50		431	(400-1)			
LNAV MDA**	640/24	466 (500-1/2)	640/50	466 (500-1)			
CIRCLING***	800-1	587 (600-1)	920-2 707 (800-2)	920-2 1/4 707 (800-2 1/4)			
			TDZL/CL Rwy 6				
			HIRL all Rwys				



AK, 15 AUG 2019 to 10 OCT 2019

AK, 15 AUG 2019 to 10 OCT 2019

ANCHORAGE, ALASKA  
 Amdt 1 08NOV18

61°15'N - 149°48'W

ELMENDORF AFB (PAED)

# RNAV (GPS) RWY 6