

# TACAN Y RWY 16

TACAN Chan <b>81</b>	EDF <b>133°</b>	APCH CRS <b>133°</b>	Rwy Idg TDZE <b>7493</b> Arprt Elev <b>213</b>	AL-1196 [USAF]	ELMENDORF AFB (PAED)
----------------------	-----------------	----------------------	---	----------------	----------------------

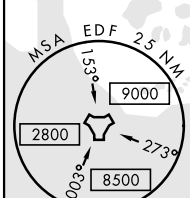
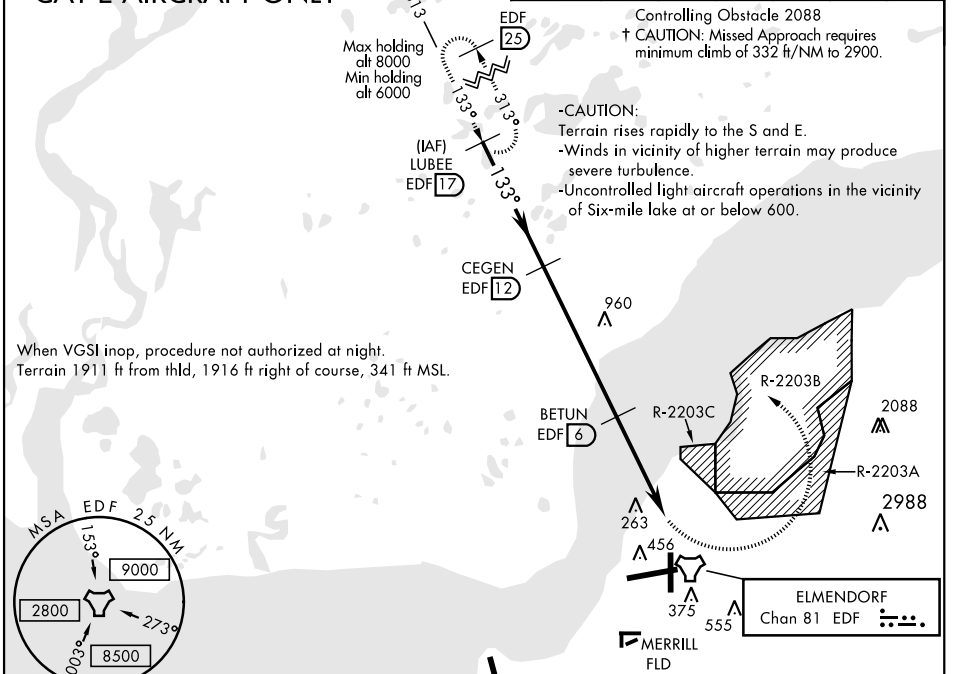
▼ \* Circling not authorized SW of Rwy 6 and 34.  
 CAT E aircraft remain within 4.5 NM of runway when executing circling maneuver.

† MISSED APPROACH: Climbing left turn to 6000 via EDF R-313 to LUBEE and hold. Continue climb-in-hold to 6000.

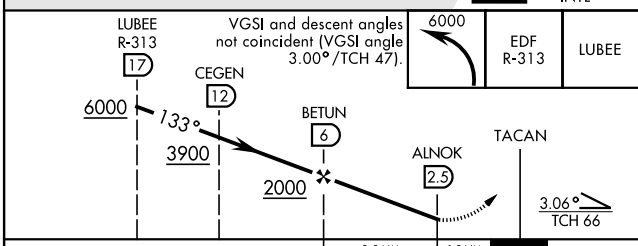
ATIS ★ <b>124.3 273.5</b>	ANCHORAGE APP CON North <b>118.6 290.5</b> South <b>123.8 259.3</b>	ELMENDORF TOWER <b>127.2 352.05</b>	GND CON <b>121.8 275.8</b>	CLNC DEL <b>128.8 306.925</b>	PAR
------------------------------	---	--	-------------------------------	----------------------------------	-----

Knots	60	120	180	240	300	360
	V/V(fpm)	332	664	996	1328	1660

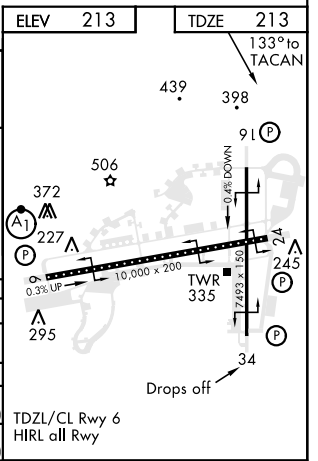
## CAT E AIRCRAFT ONLY



EMERG SAFE ALT 100 NM 15,200



CATEGORY	A	B	C	D	E
S-16 †	NOT AUTHORIZED				660-2½ 447 (500-2½)
Minima with 200 ft/NM Missed Approach Climb Gradient					
S-16	NOT AUTHORIZED				1340-3 1127 (1200-3)
CIRCLING *	NOT AUTHORIZED				1420-3 1207 (1300-3)



AK, 15 AUG 2019 to 10 OCT 2019

AK, 15 AUG 2019 to 10 OCT 2019

# TACAN Y RWY 16