

ANCHORAGE, ALASKA

TACAN Z RWY 16

TACAN	EDF	APCH CRS	Rwy ldg TDZE	7493
Chan	81	133°	213	213
			Arpt Elev	213

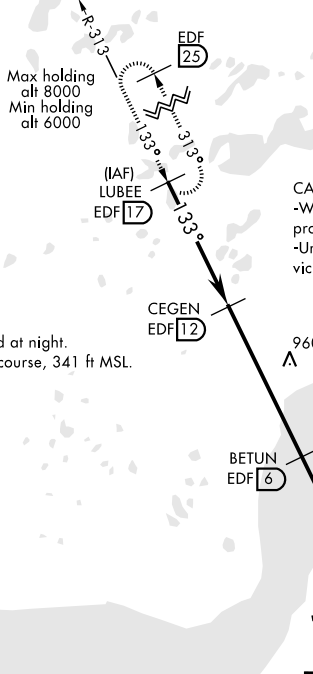
AL-1196 [USAF]

ELMENDORF AFB (PAED)

* Circling not authorized SW of Rwy 6 and 34. MISSED APPROACH: Climbing left turn to 6000 via EDF R-313 to LUBEE and hold. Continue climb-in-hold to 6000.

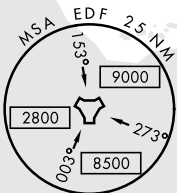
ATIS *	ANCHORAGE APP CON	ELMENDORF TOWER	GND CON	CLNC DEL	PAR
124.3 273.5	North 118.6 290.5 South 123.8 259.3	127.2 352.05	121.8 275.8	128.8 306.925	

Visibility reduction by Helicopters NA.



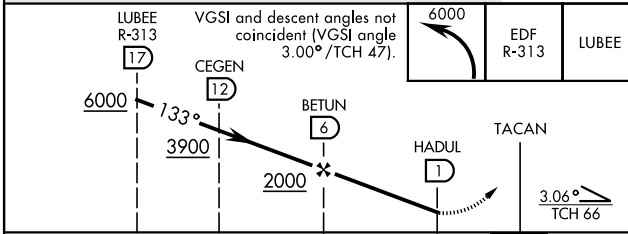
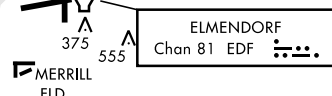
CAUTION: Terrain rises rapidly to the S and E.
-Winds in vicinity of higher terrain may produce severe turbulence.
-Uncontrolled light aircraft operations in the vicinity of Six-mile lake at or below 600.

When VGSI inop, procedure not authorized at night.
Terrain 1911 ft from thld, 1916 ft right of course, 341 ft MSL.

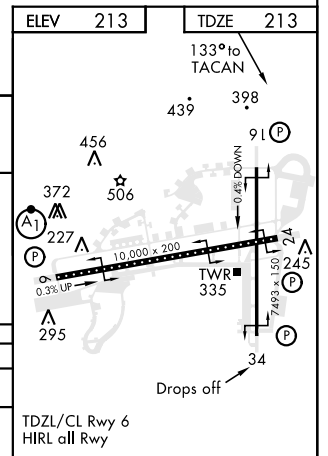


EMERG SAFE ALT 100 NM 15,200

ANCHORAGE INTL



	5 NM		0.3 NM		
CATEGORY	A	B	C	D	E
S-16	660-1	447 (500-1)	660-1 3/8	447 (500-1 3/8)	NA
CIRCLING *	800-1	587 (600-1)	920-2 707 (800-2)	920-2 1/4 707 (800-2 1/4)	NA



ANCHORAGE, ALASKA
Amdt 1 07DEC17
TERPS

61°15'N-149°48'W

ELMENDORF AFB (PAED)

TACAN Z RWY 16

AK, 15 AUG 2019 to 10 OCT 2019

AK, 15 AUG 2019 to 10 OCT 2019