

# RNAV (RNP) Z RWY 24L

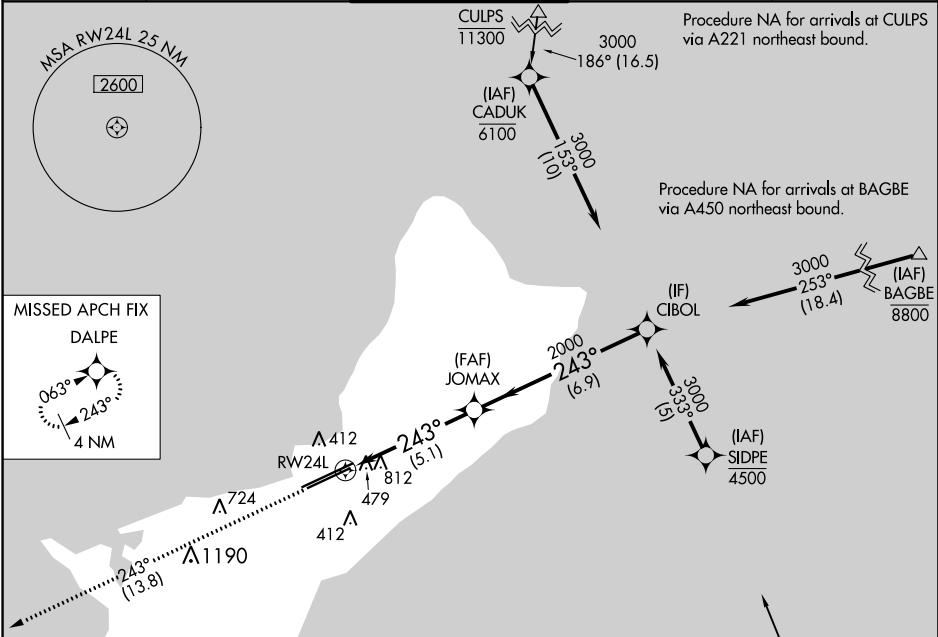
GUAM INTL (GUM)(PGUM)

APP CRS <b>243°</b>	Rwy Idg <b>9010</b>
	TDZE <b>293</b>
	Apt Elev <b>298</b>

**⚠** For uncompensated Baro-VNAV systems, procedure NA below 19°C (66°F) or above 48°C (119°F).  
**⚠** GPS required.  
 Procedure NA at night.

MISSED APPROACH: Climb to 3000 via track 243° to DALPE and hold.

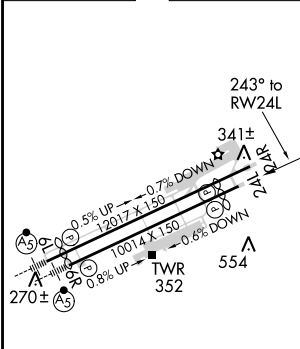
ATIS <b>119.0</b>	GUAM CERAP <b>119.8 269.0</b>	AGANA TOWER <b>118.1 340.2</b>	GND CON <b>121.9 336.4</b>	CLNC DEL <b>121.9</b>
----------------------	----------------------------------	-----------------------------------	-------------------------------	--------------------------



PAC, 15 AUG 2019 to 10 OCT 2019

PAC, 15 AUG 2019 to 10 OCT 2019

ELEV 298	<b>D</b>	TDZE 293
----------	----------	----------



Procedure NA for arrivals at GUMGE via A597 R584 southeast bound.

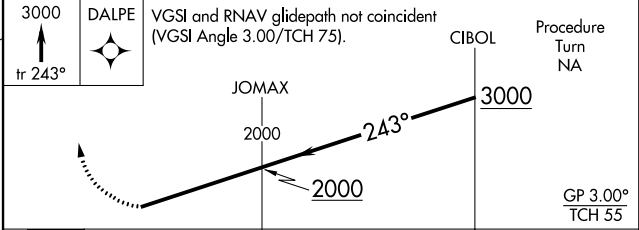
3000 tr 243°

DALPE

VGSI and RNAV glidepath not coincident (VGSI Angle 3.00/TCH 75).

CIBOL

Procedure Turn NA



CATEGORY	A	B	C	D
RNP 0.20 DA		1103-2¾	810 (900-2¾)	
RNP 0.30 DA		1140-3	847 (900-3)	

HIRL all Rwys  
 REIL Rwy 6R

## AUTHORIZATION REQUIRED