

APP CRS	Rwy Idg	11014
063°	TDZE	256
	Apt Elev	298

RNAV (RNP) Z RWY 6L

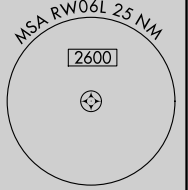
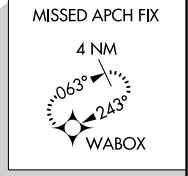
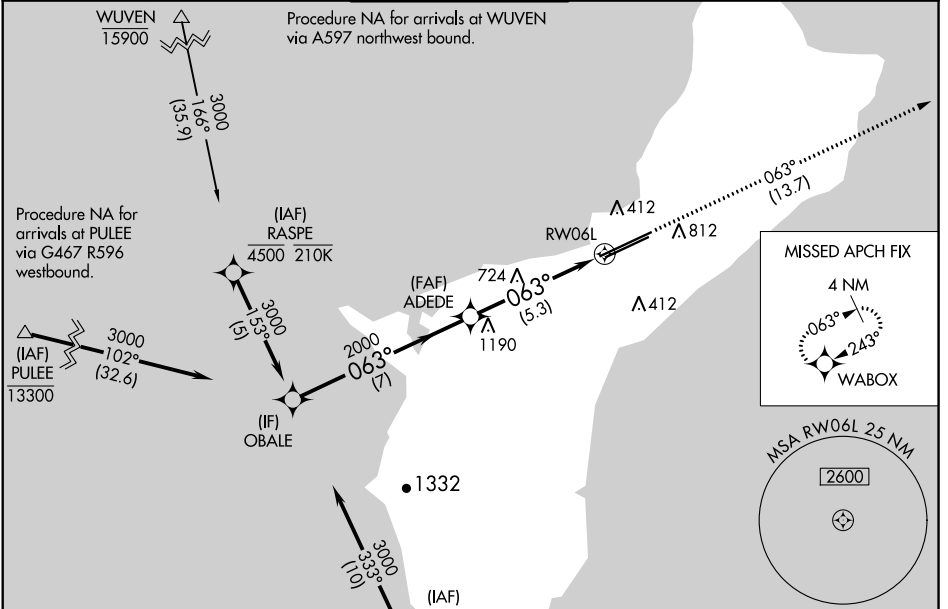
GUAM INTL (GUM)(PGUM)

▽ For uncompensated Baro-VNAV systems, procedure NA below 19°C (66°F) or above 48°C (119°F). GPS required. For inoperative MALSR, increase RNP 0.30* visibility to 1 mile and RNP 0.30 visibility to 1½ mile.
 *Missed approach requires a minimum climb of 276 feet per NM to 1400.

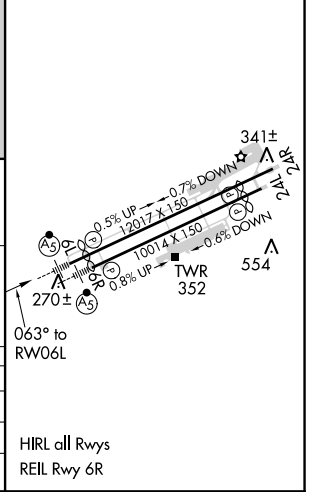
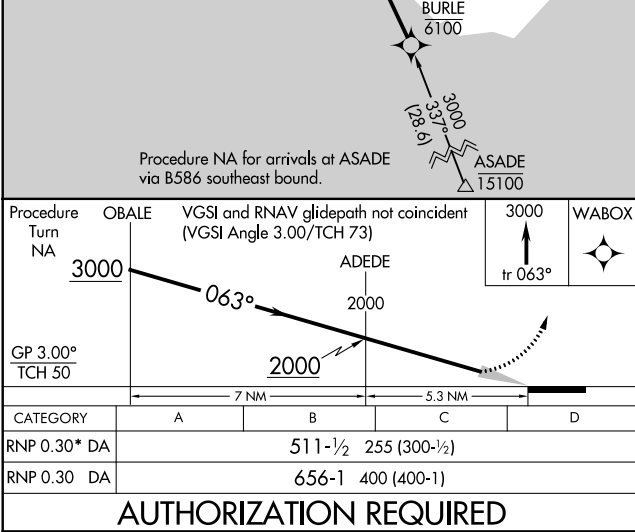


MISSED APPROACH:
 Climb to 3000 via track 063° to WABOX and hold.

ATIS 119.0	GUAM CERAP 119.8 269.0	AGANA TOWER 118.1 340.2	GND CON 121.9 336.4	CLNC DEL 121.9
----------------------	----------------------------------	--	-------------------------------	--------------------------



ELEV 298	D TDZE 256
----------	-------------------



PAC, 15 AUG 2019 to 10 OCT 2019

PAC, 15 AUG 2019 to 10 OCT 2019