

# RNAV (GPS) Y RWY 24L

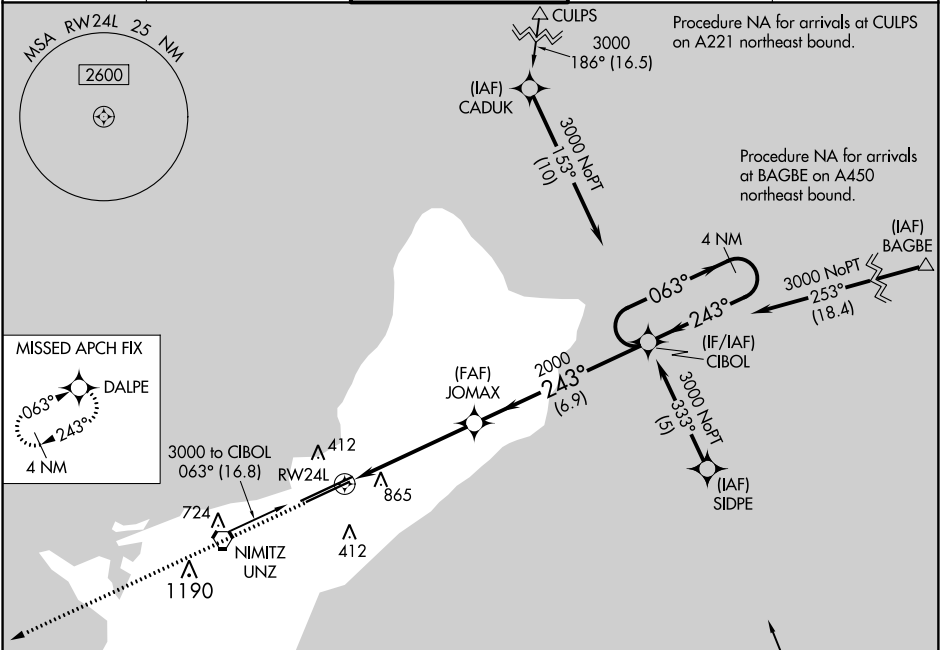
GUAM INTL (GUM)(PGUM)

APP CRS	Rwy Idg	<b>9014</b>
<b>243°</b>	TDZE	<b>293</b>
	Apt Elev	<b>305</b>

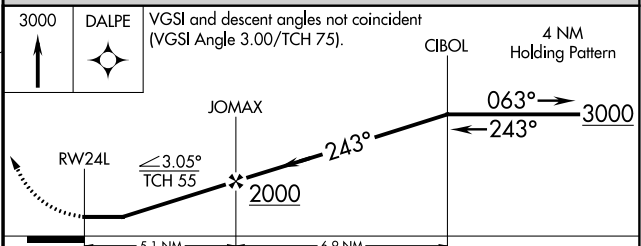
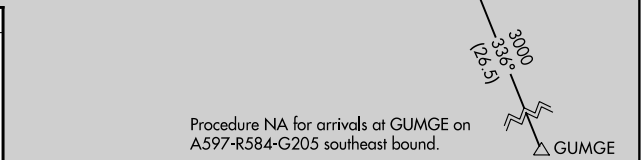
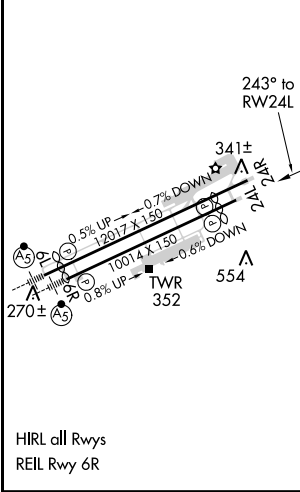
**▼** Circling NA southeast of Rwy 6R-24L.  
**▲** Rwy 24L helicopter visibility reduction below 3/4 SM NA.  
 DME/DME RNP-0.3 NA.

MISSED APPROACH: Climb to 3000 direct DALPE and hold.

ATIS	GUAM CERAP	AGANA TOWER	GND CON	CLNC DEL
<b>119.0</b>	<b>119.8 269.0</b>	<b>118.1 340.2</b>	<b>121.9 336.4</b>	<b>121.9</b>



ELEV 305	<b>D</b>	TDZE 293
----------	----------	----------



CATEGORY	A	B	C	D
LNAV MDA	1180-1¼	887 (900-1¼)	1180-2¾ 887 (900-2¾)	1180-3 887 (900-3)
<b>C</b> CIRCLING	1180-1¼	875 (900-1¼)	1180-2¾ 875 (900-2¾)	1180-3 875 (900-3)

PAC, 15 AUG 2019 to 10 OCT 2019

PAC, 15 AUG 2019 to 10 OCT 2019