

18032

AIRPORT DIAGRAM

AL-5173 (FAA)

SLOULIN FIELD INTL (ISN)
WILLISTON, NORTH DAKOTA

ASOS
125.925
CTAF/UNICOM
122.800

103°39'W

103°38'W

FIELD
ELEV
1982

2040

JANUARY 2015
ANNUAL RATE OF CHANGE
0.1°W

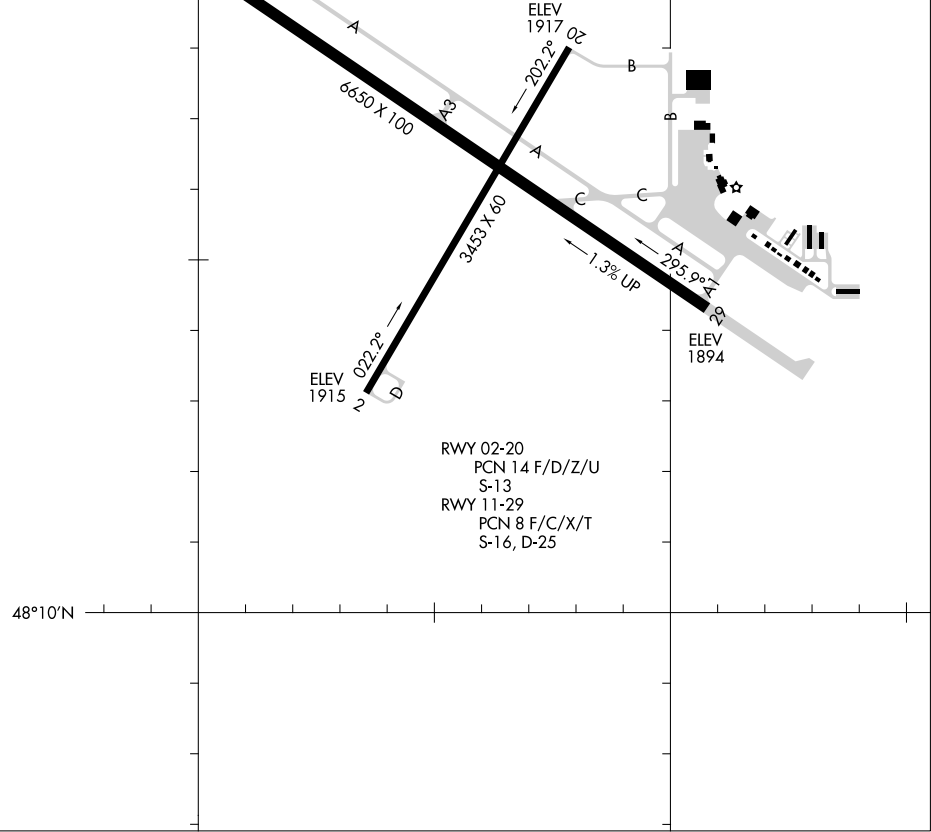
ELEV
1982

113.2°

48°11'N

NC-1, 12 SEP 2019 to 10 OCT 2019

NC-1, 12 SEP 2019 to 10 OCT 2019



6650 X 100

ELEV
1917

202.2°

ELEV
1915

022.2°

2

D

ELEV
1894

295.9°

A

RWY 02-20
PCN 14 F/D/Z/U
S-13
RWY 11-29
PCN 8 F/C/X/T
S-16, D-25

AIRPORT DIAGRAM

18032

WILLISTON, NORTH DAKOTA
SLOULIN FIELD INTL (ISN)