

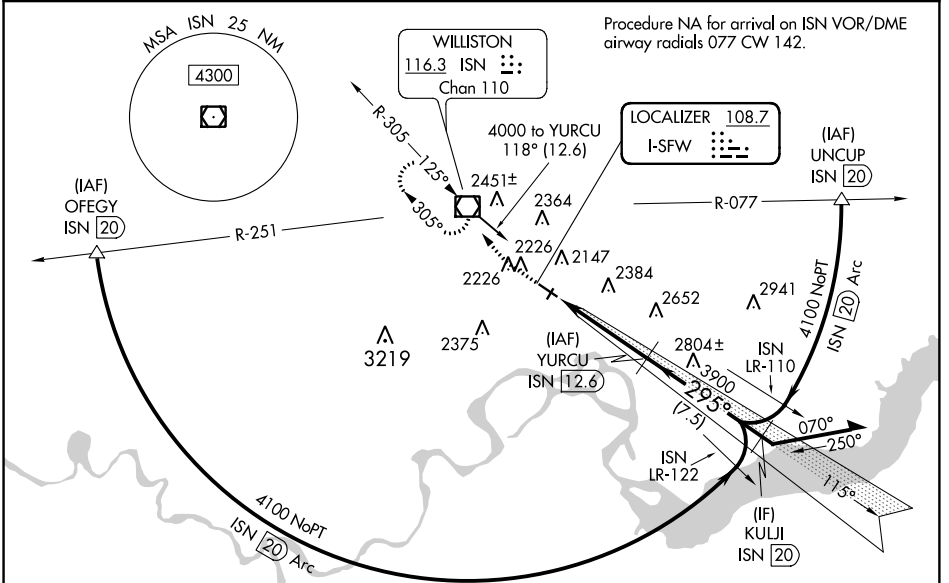
LOC I-SFW <b>108.7</b>	APP CRS <b>295°</b>	Rwy Idg TDZE Apt Elev	<b>6650</b> <b>1930</b> <b>1982</b>
---------------------------	------------------------	-----------------------------	---

# ILS or LOC RWY 29

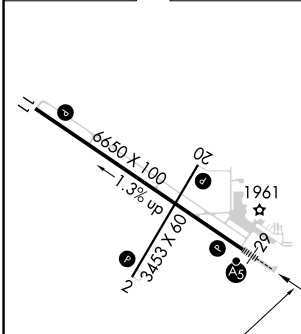
SLOULIN FIELD INTL (ISN)

DME required for procedure entry. DME required.		MALSR 	MISSED APPROACH: Climb to 2500 then climbing right turn to 4000 direct ISN VOR/DME and hold.
	When local altimeter setting not received, use Sidney altimeter setting: increase DA to 2215 feet; increase all MDA's 100 feet and visibility Cats C and D ¼ SM.		
	For inop ALS, increase S-LOC 29 Cats C and D visibility to 1¾. For inop ALS when using Sidney altimeter setting, increase S-ILS 29 all Cats visibility to ¾.		
	-36°C DME from ISN VOR/DME. Simultaneous reception of I-SFW and ISN DME required.		

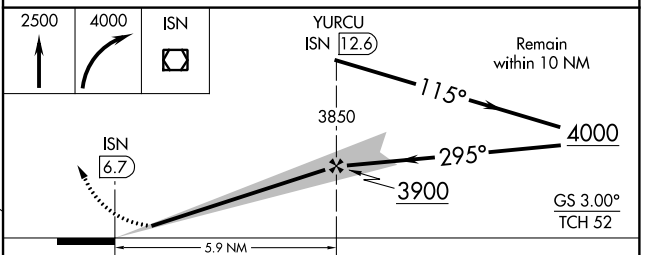
ASOS <b>125.925</b>	SALT LAKE CITY CENTER <b>126.85 305.2</b>	UNICOM <b>122.8 (CTAF) 0</b>
------------------------	--	---------------------------------



ELEV 1982	<b>D</b>	TDZE 1930
-----------	----------	-----------



FAF to MAP 5.9 NM					
Knots	60	90	120	150	180
Min:Sec	5:54	3:56	2:57	2:22	1:58



CATEGORY	A	B	C	D
S-ILS 29	2130-½ 200 (200-½)			
S-LOC 29	2420-½	490 (500-½)	2420-1	490 (500-1)
CIRCLING	2560-1 578 (600-1)	2580-1 598 (600-1)	2600-1¾ 618 (700-1¾)	2620-2 638 (700-2)

NC-1, 12 SEP 2019 to 10 OCT 2019

NC-1, 12 SEP 2019 to 10 OCT 2019