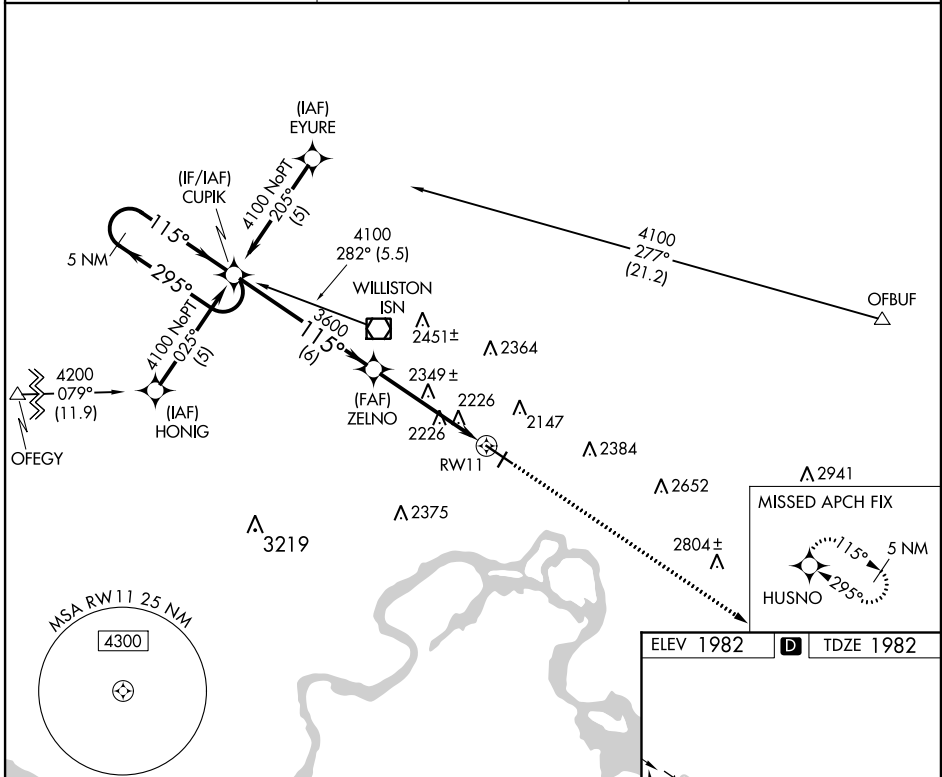


APP CRS	Rwy ldg	6650
115°	TDZE	1982
	Apt Elev	1982

RNAV (GPS) RWY 11

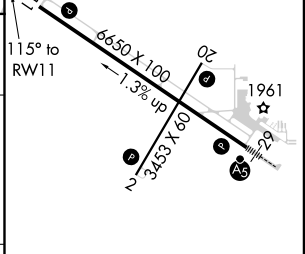
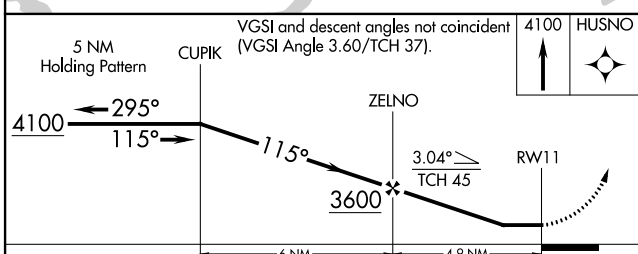
SLOULIN FIELD INTL (ISN)

<p>⚠ DME/DME RNP-0.3 NA. Visibility reduction by helicopters NA. When local altimeter setting not received, use Sidney altimeter setting and increase all MDA 100 feet and all Cat C and Cat D visibilities ¼ mile.</p> <p>⚠ -36°C</p>		<p>MISSED APPROACH: Climb to 4100 direct HUSNO and hold.</p>
<p>ASOS</p> <p>125.925</p>	<p>SALT LAKE CITY CENTER</p> <p>126.85 305.2</p>	<p>UNICOM</p> <p>122.8 (CTAF) 0</p>



NC-1, 12 SEP 2019 to 10 OCT 2019

NC-1, 12 SEP 2019 to 10 OCT 2019



CATEGORY	A	B	C	D
RNAV MDA	2600-1	618 (700-1)	2600-1¾ 618 (700-1¾)	2600-2 618 (700-2)
CIRCLING	2600-1	618 (700-1)	2600-1¾ 618 (700-1¾)	2620-2 638 (700-2)

REIL Rwy 20
 REIL Rwys 2 and 11
 MIRL Rwys 2-20 and 11-29