

WAAS CH 73017 W29A	APP CRS 295°	Rwy Idg TDZE Apt Elev	6650 1930 1982
--	------------------------	-----------------------------	---

RNAV (GPS) RWY 29

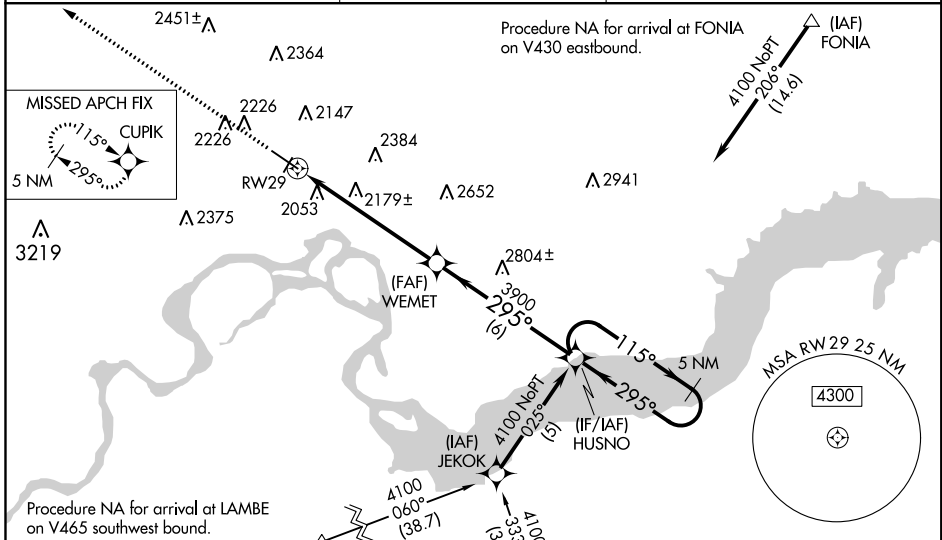
SLOULIN FIELD INTL (ISN)

Baro-VNAV NA when using Sidney altimeter setting. For uncompensated Baro-VNAV systems, LNAV/VNAV NA below -18°C (0°F) or above 45°C (113°F). DME/DME RNP-0.3 NA. When local altimeter setting not received, use Sidney altimeter setting and increase all DA 84 feet and all MDA 100 feet, increase LNAV Cat C visibility ¼ mile and LNAV Cat D visibility ½ mile, increase LNAV/VNAV all Cats visibility ½ mile, and Circling Cat C and D visibility ¼ mile. VDP NA with Sidney altimeter setting. For inop MALSRS when using Sidney altimeter setting, increase LPV all Cats visibility ½ mile.

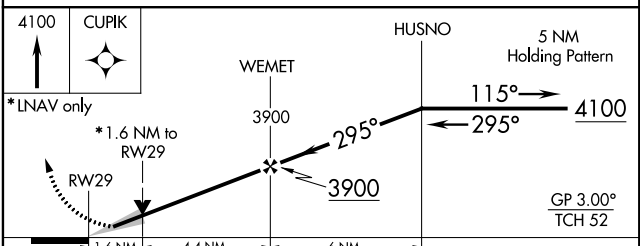
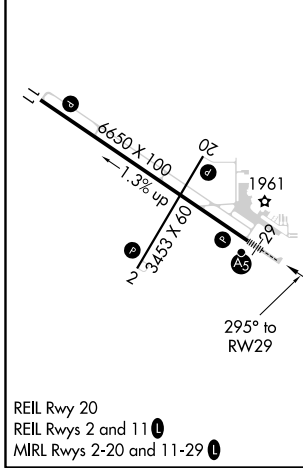
MALSRS

MISSED APPROACH:
Climb to 4100 direct CUIPK and hold.

ASOS 125.925	SALT LAKE CITY CENTER 126.85 305.2	UNICOM 122.8 (CTAF) 0
------------------------	--	---------------------------------



ELEV 1982	D	TDZE 1930
-----------	----------	-----------



CATEGORY	A	B	C	D
LPV DA	2130-½		200 (200-½)	
LNAV/VNAV DA	2352-1		422 (400-1)	
LNAV MDA	2440-½ 510 (500-½)		2440-1 510 (500-1)	
CIRCLING	2560-1	2580-1	2600-1¾	2620-2
	578 (600-1)	598 (600-1)	618 (700-1¾)	638 (700-2)

NC-1, 12 SEP 2019 to 10 OCT 2019

NC-1, 12 SEP 2019 to 10 OCT 2019