

RNAV (GPS) RWY 9

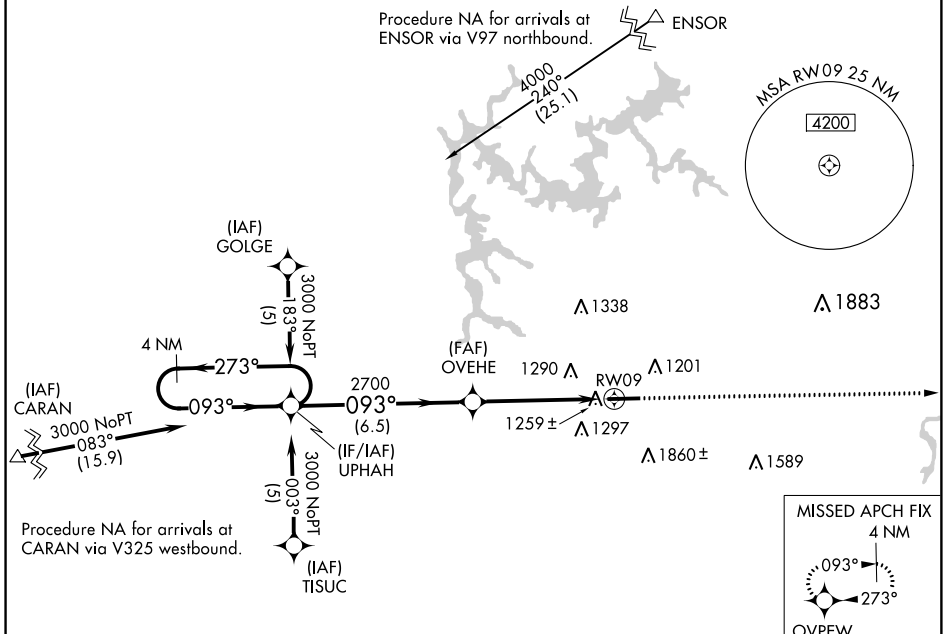
COBB COUNTY INTL-McCOLLUM FIELD (RYY)

APP CRS	Rwy Idg	5233
093°	TDZE	1028
	Apt Elev	1040

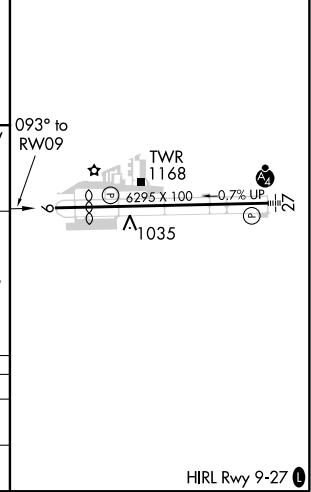
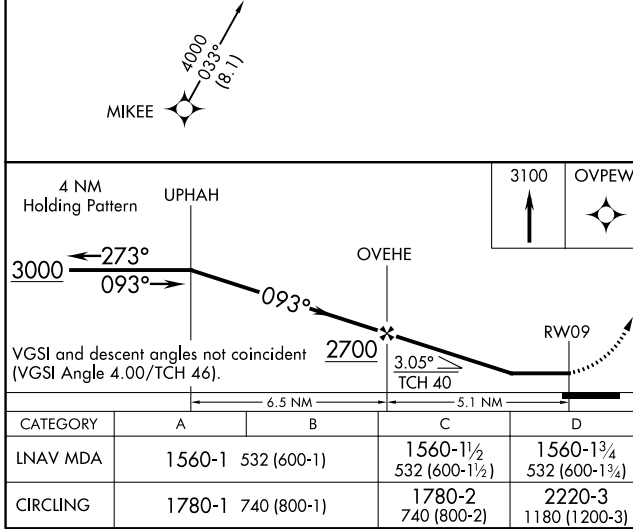
▽ DME/DME RNP-0.3 NA. Visibility reduction by helicopters NA. When local altimeter setting not received, use Hartsfield-Jackson Atlanta Intl altimeter
▲ NA setting and increase all MDA 60 feet and Circling Cat. B and C visibility ¼ mile.

MISSED APPROACH: Climb to 3100 direct OVPEW and hold.

ATIS 128.125	ATLANTA APP CON 121.0 268.7	McCOLLUM TOWER * 125.9 (CTAF) 0	GND CON 119.0	CLNC DEL 119.0 268.7	UNICOM 122.7
------------------------	---------------------------------------	--	-------------------------	--------------------------------	------------------------



ELEV 1040	D TDZE 1028
-----------	--------------------



CATEGORY	A	B	C	D
RNAV MDA	1560-1 532 (600-1)	1560-1½ 532 (600-1½)	1560-1¾ 532 (600-1¾)	1560-2 532 (600-2)
CIRCLING	1780-1 740 (800-1)	1780-2 740 (800-2)	2220-3 1180 (1200-3)	

HIRL Rwy 9-27 **0**

SE-4, 12 SEP 2019 to 10 OCT 2019

SE-4, 12 SEP 2019 to 10 OCT 2019