


LOC I-LBX <b>109.1</b>	APP CRS <b>175°</b>	Rwy Idg TDZE Apt Elev	<b>7000</b> <b>25</b> <b>25</b>
---------------------------	------------------------	-----------------------------	---------------------------------------

**ILS or LOC RWY 17**  
TEXAS GULF COAST RGNL (L.B.X)

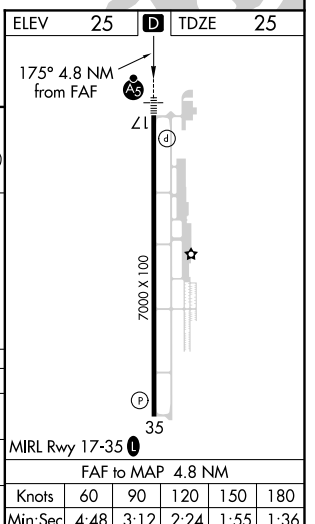
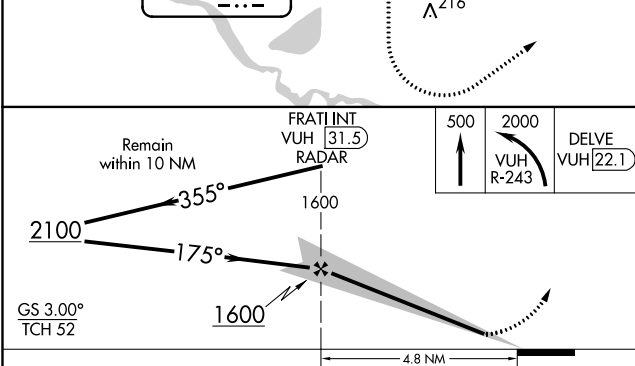
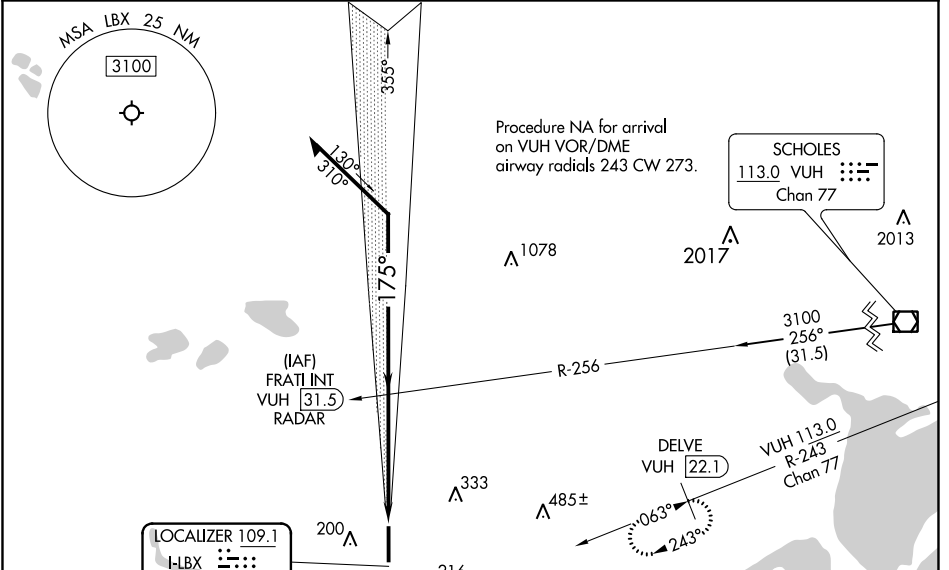
DME required.

▼ Circling NA east of Rwy 17-35. When local altimeter setting not received, use William P Hobby altimeter setting and increase all DA 81 feet and all MDA 100 feet, increase S-LOC 17 Cats C/D visibility to 1/4 SM, increase Circling Cat C to 1/8 SM. For inop ALS ▲ when using William P Hobby altimeter setting, increase S-ILS 17 all Cats visibility to 7/8 SM and S-LOC 17 Cats C and D to 1/8 SM. For inop ALS, increase S-LOC 17 Cat C-D visibility to 1/8 SM.

MALSR 

MISSED APPROACH: Climb to 500 then climbing left turn to 2000 on VUH VOR/DME R-243 to DELVE/VUH 22.1 DME and hold.

ASOS <b>119.925</b>	HOUSTON APP CON <b>134.45 284.0</b>	CLNC DEL <b>125.2</b>	UNICOM <b>123.0 (CTAF) 0</b>
------------------------	--	--------------------------	---------------------------------



CATEGORY	A	B	C	D
S-ILS 17	225-1/2 200 (200-1/2)			
S-LOC 17	500-1/2	475 (500-1/2)	500-1	475 (500-1)
CIRCLING	500-1	475 (500-1)	500-1 1/2 475 (500-1 1/2)	620-2 595 (600-2)

SC-5, 12 SEP 2019 to 10 OCT 2019

SC-5, 12 SEP 2019 to 10 OCT 2019