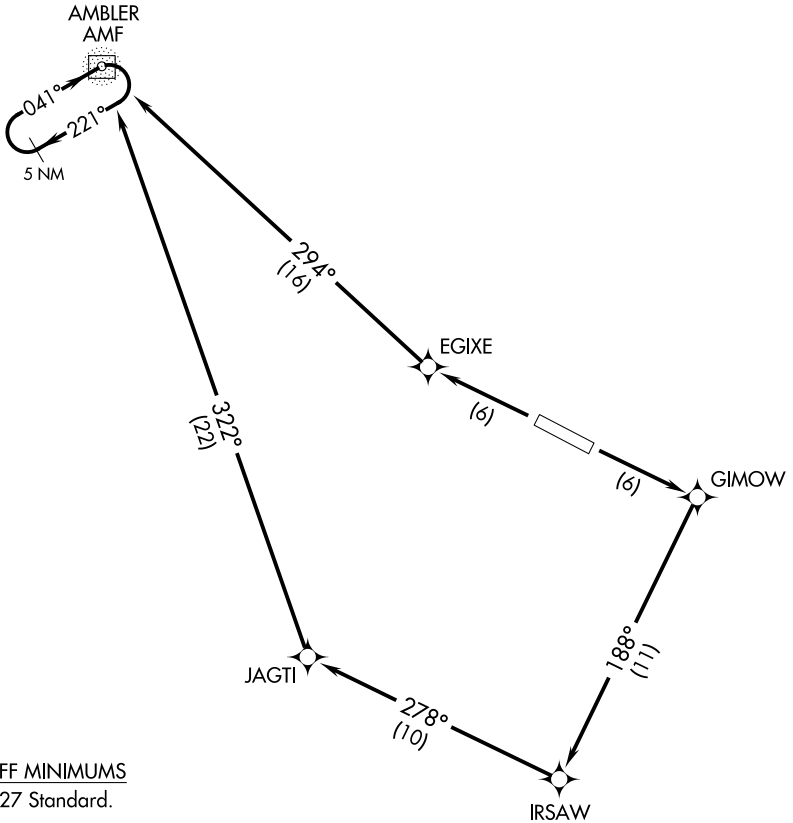


# AMBLR TWO DEPARTURE (RNAV)

**TOP ALTITUDE:  
ASSIGNED BY ATC**

ANCHORAGE CENTER  
119.2 263.0  
CTAF  
122.7



TAKEOFF MINIMUMS  
Rwy 9, 27 Standard.

NOTE: GPS required  
NOTE: RNAV 1.

NOTE: Chart not to scale.



## DEPARTURE ROUTE DESCRIPTION

TAKEOFF RUNWAY 9: Climb to 4000 or ATC assigned higher altitude direct GIMOW and via track 188° to IRSAW, and via track 278° to JAGTI, and via track 322° to AMF NDB/DME.

TAKEOFF RUNWAY 27: Climb to 4000 or ATC assigned higher altitude direct EGIXE and via track 294° to AMF NDB/DME.

AK, 15 AUG 2019 to 10 OCT 2019

AK, 15 AUG 2019 to 10 OCT 2019