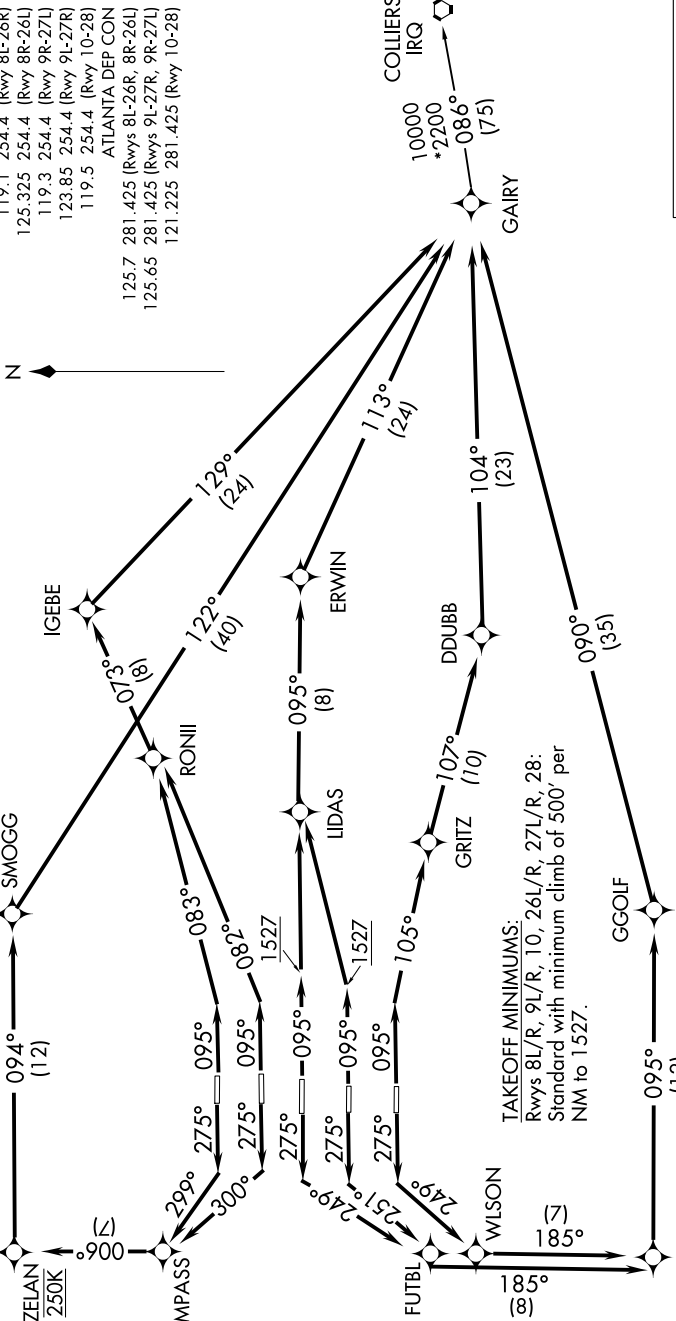


GAIRY TWO DEPARTURE (RNAV)

SE-4, 10 OCT 2019 to 07 NOV 2019

NOTE: If unable to accept climb rate, advise Clearance Delivery on initial contact.
 NOTE: Use departure frequency depicted unless otherwise advised.
 NOTE: For Turbojet aircraft only.
 NOTE: DME/DME/IRU or GPS Required.
 NOTE: RNAV 1
 NOTE: RADAR Required for non-GPS equipped aircraft.
 NOTE: Accelerate to 250K, if unable, advise both tower and Departure Control on initial contact.

NOTE: Transponder code will be issued via PDC or Atlanta Clearance Delivery.
 NOTE: Aircraft at Midfield Ramps will advise Ramp Towers of departure SID prior to pushback. Upon receipt of ATC clearance (from ATL Clearance Delivery), read back only your call sign and transponder code, unless you have a question.



TOP ALTITUDE: 10000

NOTE: Chart not to scale.

(NARRATIVE ON FOLLOWING PAGE)

SE-4, 10 OCT 2019 to 07 NOV 2019