

GNDLF TWO ARRIVAL(RNAV) Transition Routes

SE-4, 10 OCT 2019 to 07 NOV 2019

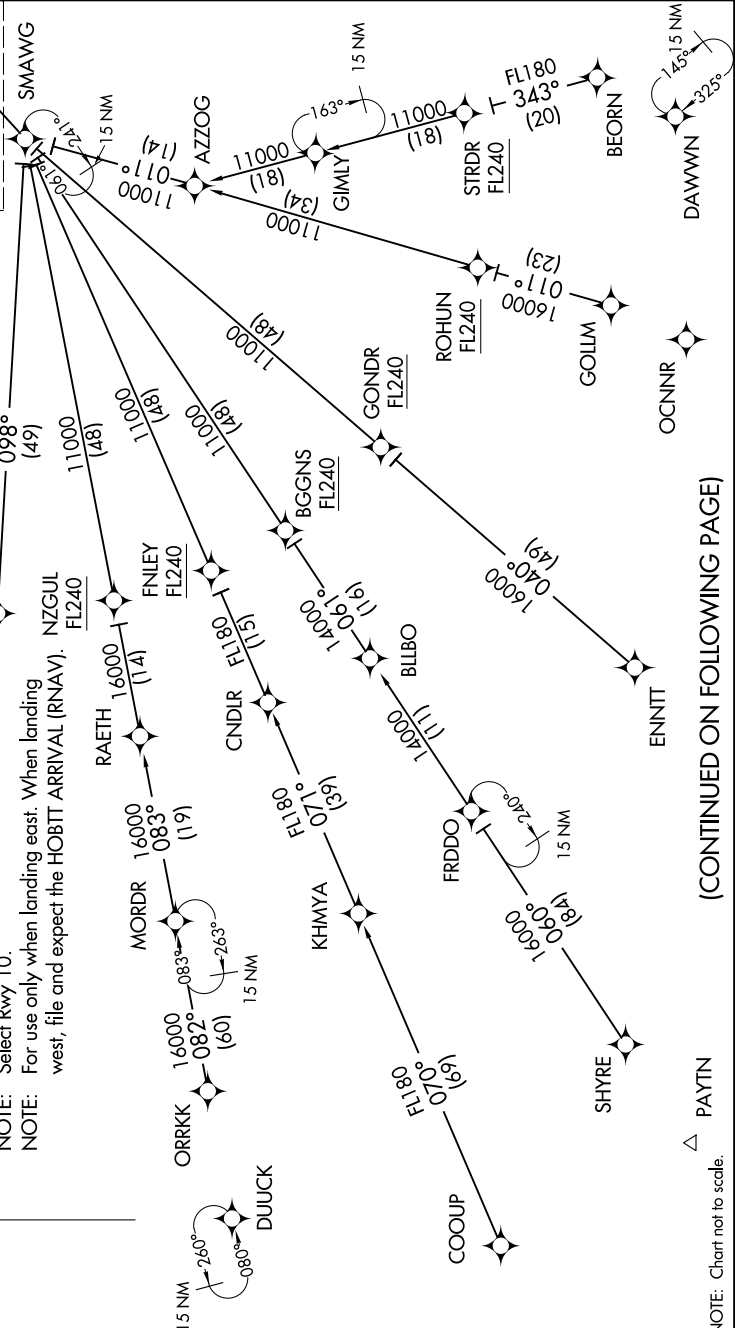
D-ATIS ARR
119.65
ATLANTA APP CON
127.9 379.9



- NOTE: RADAR required.
- NOTE: RNAV 1.
- NOTE: DME/DME/IRU or GPS required.
- NOTE: Turbojet aircraft only.
- NOTE: Expect to receive "descend via" clearance from Atlanta Center. Atlanta Approach will assign landing runway.
- NOTE: Select Rwy 10.
- NOTE: For use only when landing east. When landing west, file and expect the HOBTT ARRIVAL (RNAV).

See following page for Arrival Routes.

GNDLF
11000 250K



△ PAYTN
NOTE: Chart not to scale.

(CONTINUED ON FOLLOWING PAGE)

SE-4, 10 OCT 2019 to 07 NOV 2019

GNDLF TWO ARRIVAL (RNAV) Transition Routes