

LOC/DME I-GXZ 110.1 Chan 38	APP CRS 275°	Rwy ldg TDZE Apt Elev	8800 990 1026
---	------------------------	-----------------------------	--

ILS RWY 26R (SA CAT I & II)

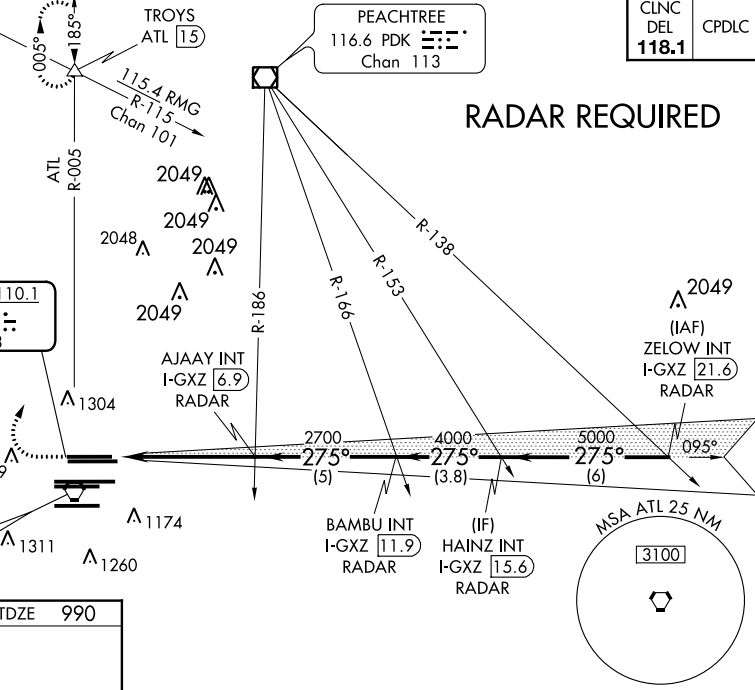
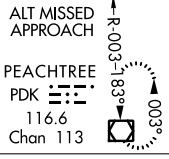
HARTSFIELD-JACKSON ATLANTA INTL (ATL)

▼ SA CAT I: Requires specific OPSPEC, MSPEC, or LOA approval and use of HUD to DH.
SA CAT II: Reduced lighting: Requires specific OPSPEC, MSPEC, or LOA approval and use of autoland or HUD to touchdown.
Simultaneous approach authorized with Rwy 27R or 27L or 28, or Rwy 27R and 28.



MISSED APPROACH: Climb to 1400 then climbing right turn to 3500 on ATL VORTAC R-005 to TROYS INT/ATL 15 DME and hold.

D-ATIS ARR 119.65	ATLANTA APP CON DEP 127.9 379.9	ATLANTA TOWER 8L-26R 8R-26L 9L-27R 9R-27L 10-28 RWYS 119.1 125.325 123.85 119.3 119.5 254.4	ALL RWYS (8L-26R,8R-26L) (9L-27R,9R-27L) 10-28 RWYS 121.9 121.75 121.65 254.4	GND CON ALL 121.75 121.65 254.4
-----------------------------	--	--	--	--



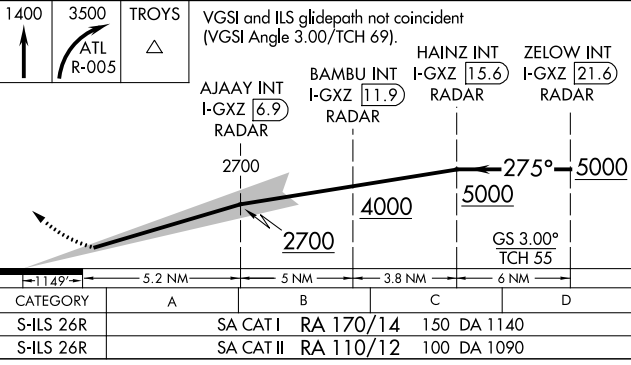
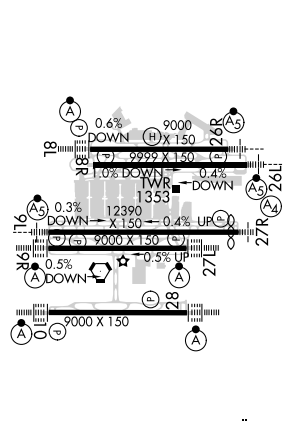
RADAR REQUIRED

CINC DEL	CPDLC
118.1	

SE-4, 10 OCT 2019 to 07 NOV 2019

SE-4, 10 OCT 2019 to 07 NOV 2019

ELEV 1026	D	TDZE 990
-----------	----------	----------



SA CATEGORY I & II ILS - SPECIAL AIRCREW & AIRCRAFT CERTIFICATION REQUIRED