

LOC/DME I-PKU 111.75 Chan 54 (Y)	APP CRS 275°	Rwy Idg TDZE Apt Elev 9000 998 1026
--	------------------------	---

ILS RWY 28 (CAT II)
HARTSFIELD-JACKSON ATLANTA INTL (ATL)

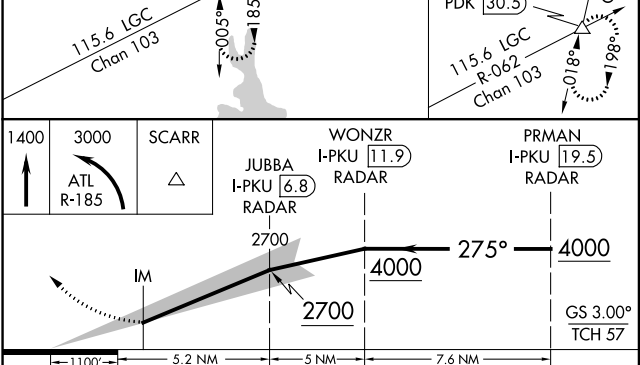
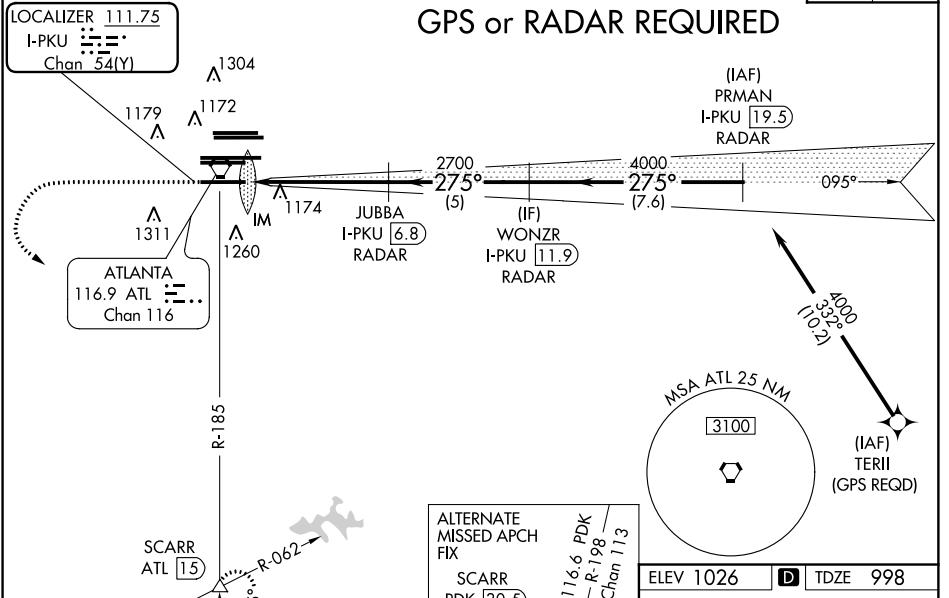
Simultaneous approach authorized with Rwy 26R or 26L or 27R, or Rwy 26R and 27R. DME or Radar Required.

ALSF-2
MISSED APPROACH: Climb to 1400 then climbing left turn to 3000 on ATL VORTAC R-185 to SCARR INT/ ATL 15 DME and hold.

D-ATIS ARR 119.65	ATLANTA APP CON 127.9 379.9	ATLANTA TOWER 8L-26R 8R-26L 9L-27R 9R-27L 10-28 RWYS DEP 125.55 127.9 379.9 119.1 125.325 123.85 119.3 119.5 254.4	ALL RWYS 121.9 121.75 121.65 254.4	GND CON 10-28 RWYS	ALL RWYS
-----------------------------	---------------------------------------	---	--	-----------------------	----------

CLNC DEL 118.1	CPDLC
-----------------------------	-------

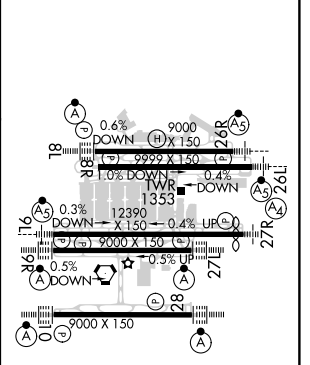
GPS or RADAR REQUIRED



CATEGORY S-ILS 28	A	B	C	D
RA 188/12 100 DA 1098				

CATEGORY II ILS - SPECIAL AIRCREW & AIRCRAFT CERTIFICATION REQUIRED

ELEV 1026	D	TDZE 998
-----------	---	----------



HIREL all Rwys
TDZ/CL Rwys 8L, 9R, 10, 26R, 27L and 28

SE-4, 10 OCT 2019 to 07 NOV 2019

SE-4, 10 OCT 2019 to 07 NOV 2019