

LOC/DME I-OMO 111.55 Chan 52 (Y)	APP CRS 095°	Rwy Ldg 9000 TDZE 1000 Apt Elev 1026
--	------------------------	---

ILS or LOC RWY 10

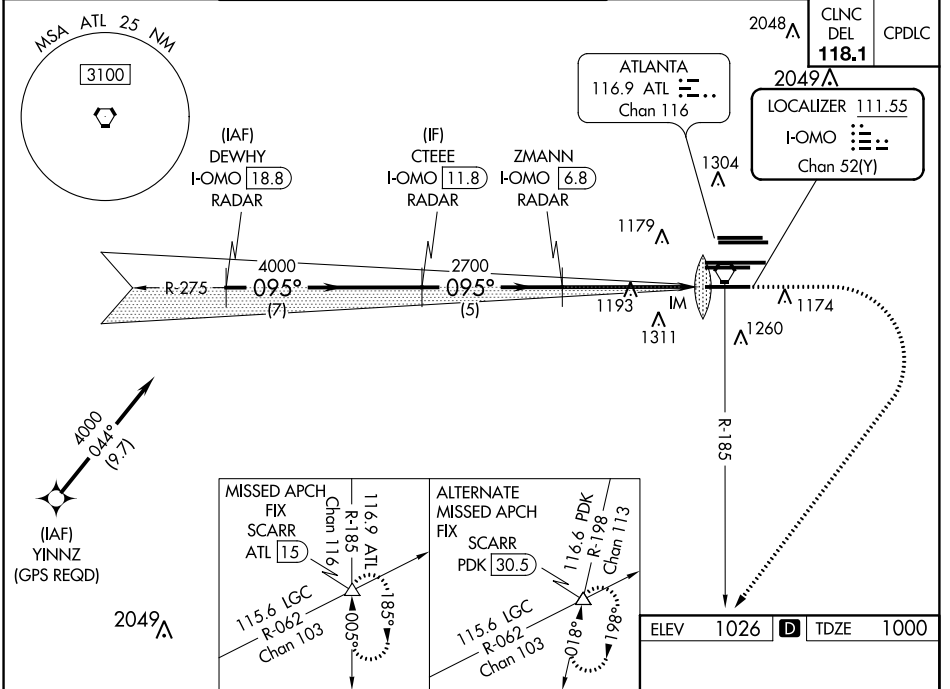
HARTSFIELD-JACKSON ATLANTA INTL (ATL)

▼ For inop ALSF-2, increase S-LOC Cats C/D visibility to 1%.
 Simultaneous approach authorized with Rwy 9L or 8R or 8L, or Rwys 9L and 8L.
 DME or Radar required.
 Localizer not suitable for electronic rollout guidance.

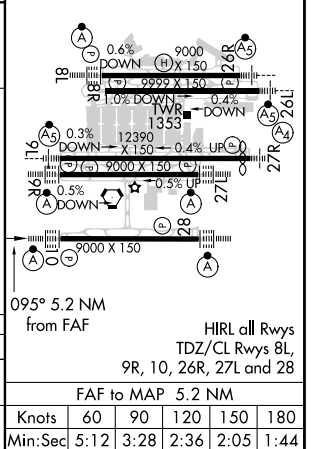


MISSED APPROACH: Climb to 1400 then climbing right turn to 3000 on ATL VORTAC R-185 to SCARR INT/ATL 15 DME and hold.

D-ATIS ARR 119.65	ATLANTA APP CON 127.9 379.9	ATLANTA TOWER 8L-26R 8R-26L 9L-27R 9R-27L 10-28 RWYS 119.1 125.325 123.85 119.3 119.5 254.4	ALL RWYS 121.9	GND CON 8L-26R,8R-26L (9L-27R,9R-27L) 10-28 RWYS 121.75 121.65 254.4	ALL RWYS
-----------------------------	--	--	-----------------------------	---	-------------



DEWHY I-OMO 18.8 RADAR	CTEEE I-OMO 11.8 RADAR	ZMANN I-OMO 6.8 RADAR	1400	3000	SCARR
4000 — 095° — 4000 — 2700			ATL R-185	△	
GS 3.00° TCH 55			*LOC only		
7 NM — 5 NM — 3.8 NM — 1.3 — 0.1					
CATEGORY	A	B	C	D	
S-ILS 10	1200/18		200 (200-½)		
S-LOC 10	1500/24	500 (500-½)	1500/50	500 (500-1)	



SE-4, 10 OCT 2019 to 07 NOV 2019

SE-4, 10 OCT 2019 to 07 NOV 2019