

LOC/DME I-HFW <b>109.3</b> Chan <b>30</b>	APP CRS <b>095°</b>	Rwy Idg 8L <b>8800</b> 8R <b>9999</b> TDZE <b>1015</b> 1024 Apt Elev <b>1026</b> <b>1026</b>
---	------------------------	---

# ILS or LOC RWY 8L

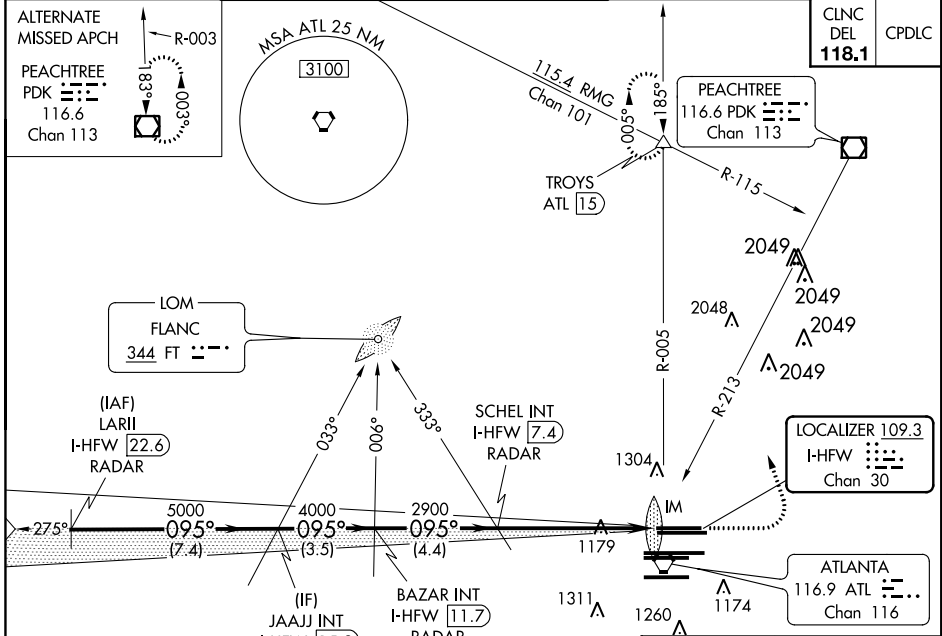
HARTSFIELD-JACKSON ATLANTA INTL (ATL)

▼ Inop table does not apply to Sidestep 8R.  
Simultaneous approach authorized with Rwy 9L or 9R or 10, or Rwys 9L and 10. ADF or DME or RADAR required.

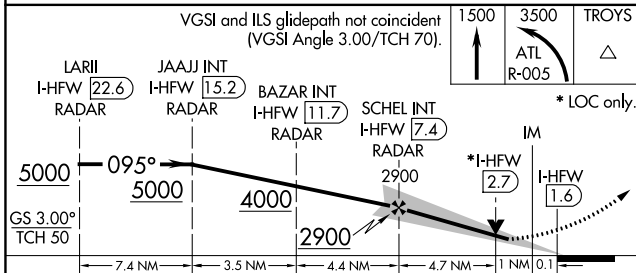


MISSED APPROACH: Climb to 1500 then climbing left turn to 3500 on ATL VORTAC R-005 to TROYS INT/ATL 15 DME and hold.

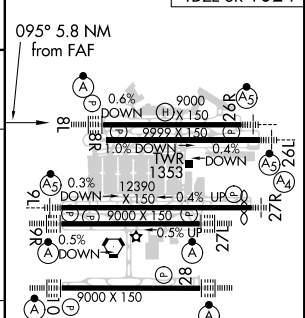
D-ATIS ARR <b>119.65</b> DEP <b>125.55</b>	ATLANTA APP CON <b>127.9</b> <b>379.9</b>	ATLANTA TOWER 8L-26R 8R-26L 9L-27R 9R-27L 10-28 RWYS <b>119.1</b> <b>125.325</b> <b>123.85</b> <b>119.3</b> <b>119.5</b> <b>254.4</b>	ALL RWYS <b>121.9</b>	GND CON 8L-26R,8R-26L (9L-27R,9R-27L) 10-28 RWYS <b>121.75</b>	ALL RWYS <b>254.4</b>
--	---	---	-----------------------------	--	-----------------------------



## RADAR REQUIRED



ELEV 1026	TDZE 8L 1015	TDZE 8R 1024
-----------	--------------	--------------



CATEGORY	A	B	C	D
S-ILS 8L	1215/18		200 (200-½)	
S-LOC 8L	1440/24	425 (500-½)	1440/40	425 (500-¾)
SIDESTEP 8R	1440/55	416 (500-1)	1440-1½ 416 (500-1½)	1440-2 416 (500-2)

HIREL all Rwys TDZ/CL Rwys 8L, 9R, 10, 26R, 27L and 28					
FAF to MAP 5.8 NM					
Knots	60	90	120	150	180
Min:Sec	5:48	3:52	2:54	2:19	1:56

SE-4, 10 OCT 2019 to 07 NOV 2019

SE-4, 10 OCT 2019 to 07 NOV 2019