

LOC/DME I-HZK 110.5 Chan 42	APP CRS 095°	Rwy Idg 9L 11730 8925 9R 1019 1026 TDZE 1019 1026 Apt Elev 1026 1026
---	------------------------	--

ILS or LOC RWY 9L

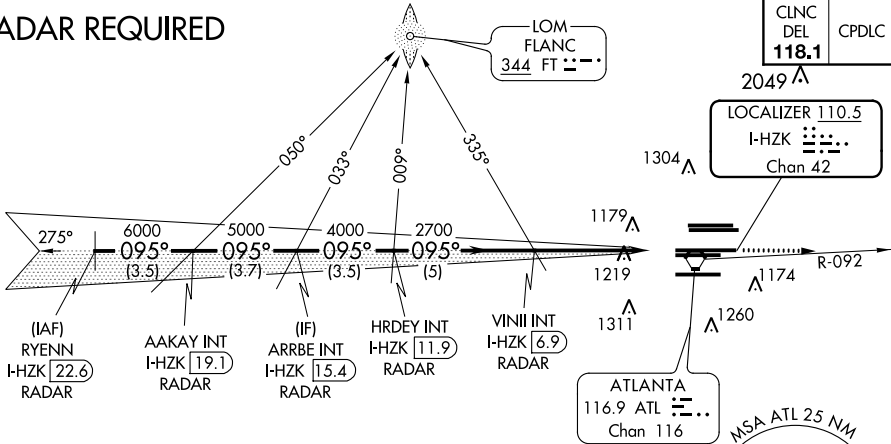
HARTSFIELD-JACKSON ATLANTA INTL (ATL)

For inop MALSRS, increase S-ILS 9L all Cats visibility to RVR 6000 and S-LOC 9L Cats A/B visibility to RVR 5000, Cats C/D visibility to 1/2 mile. Inop table does not apply to sidestep 9R Cats A and B. Simultaneous approach authorized with Rwy 8L or 8R or 10, or Rwys 8L and 10. ADF or DME or RADAR required. Helicopter visibility reduction below RVR 4000 NA.

Rwy 9L MALSRS 	Rwy 9R ALSf-2 	MISSED APPROACH: Climb to 1500 then climbing left turn to 4000 on ATL VORTAC R-092 to CONNI INT/ATL 31 DME and hold.
----------------------	----------------------	--

D-ATIS ARR 119.65	ATLANTA APP CON 127.9 379.9	ATLANTA TOWER 8L-26R 8R-26L 9L-27R 9R-27L 10-28 RWYS 119.1 125.325 123.85 119.3 119.5 254.4				ALL RWYS 121.9	GND CON 121.75	ALL RWYS 121.65 254.4
DEP 125.55	127.9 379.9	119.1 125.325 123.85 119.3 119.5 254.4	121.9	121.75	121.65	254.4		

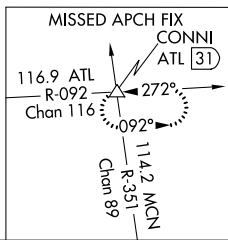
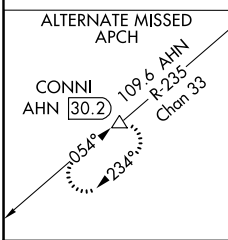
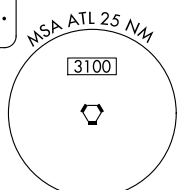
RADAR REQUIRED



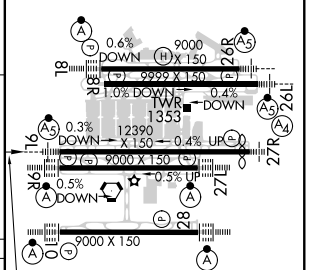
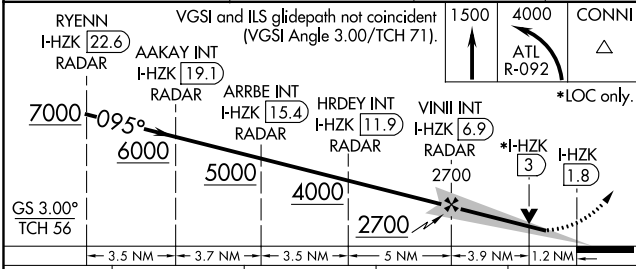
CINC DEL 118.1	CPDLC
-----------------------------	-------

2049 Δ
LOCALIZER 110.5 I-HZK Chan 42

ATLANTA 116.9 ATL Chan 116



ELEV 1026	TDZE 9L 1019	TDZE 9R 1026
-----------	--------------	--------------



CATEGORY	A	B	C	D
S-ILS 9L	1359/40		340 (400-3/4)	
S-LOC 9L	1480/40	461 (500-3/4)	1480/50	461 (500-1)
SIDESTEP 9R	1480/55	454 (500-1)	1480-1 3/4 454 (500-1 3/4)	1480-2 454 (500-2)

095° 5.1 NM from FAF	HIRL all Rwys	TDZ/CL Rwys 8L, 9R, 10, 26R, 27L and 28			
FAF to MAP 5.1 NM					
Knots	60	90	120	150	180
Min:Sec	5:06	3:24	2:33	2:02	1:42

SE-4, 10 OCT 2019 to 07 NOV 2019

SE-4, 10 OCT 2019 to 07 NOV 2019