

ATLANTA, GEORGIA

AL-26 (FAA)

19283

LOC/DME I-FUN 108.9 Chan 26	APP CRS 095°	Rwy Idg TDZE Apt Elev	9R 8925 11730 1026 1019 1026 1026	9L 11730 1019 1026
--	------------------------	-----------------------------	---	--

ILS or LOC RWY 9R

HARTSFIELD-JACKSON ATLANTA INTL (ATL)

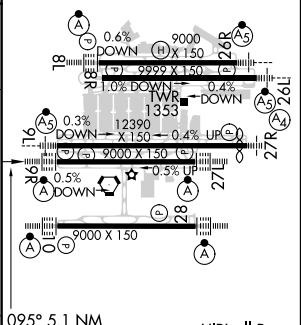
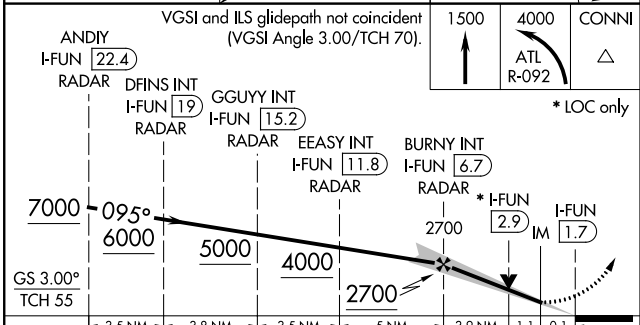
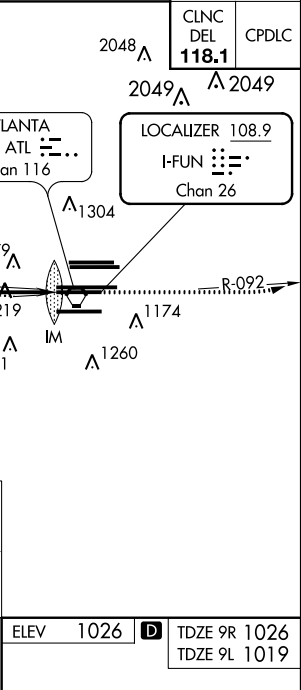
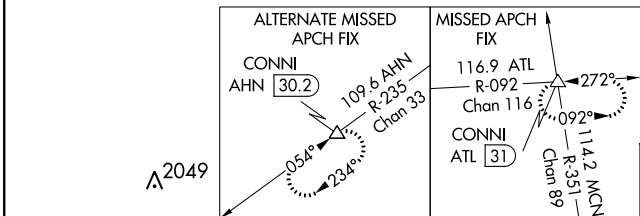
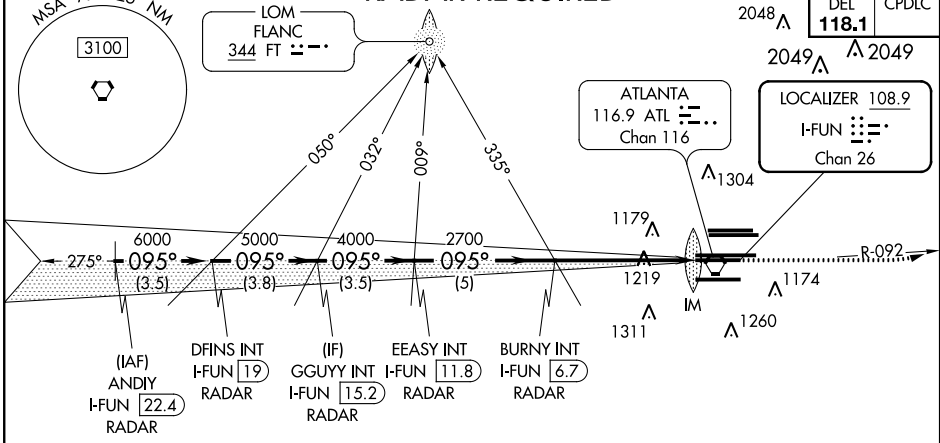
▼ Inop table does not apply to sidestep 9L for Cats A and B. ADF or DME or RADAR required. Simultaneous approach authorized with Rwy 8L or 8R.



MISSED APPROACH: Climb to 1500 then climbing left turn to 4000 on ATL VORTAC R-092 to CONNI INT/ATL 31 DME and hold, or as directed by ATC.

D-ATIS ARR 119.65	ATLANTA APP CON 127.9 379.9	ATLANTA TOWER					ALL RWYS	GND CON		ALL RWYS
DEP 125.55	127.9 379.9	8L-26R	8R-26L	9L-27R	9R-27L	10-28	(8L-26R, 8R-26L)	(9L-27R, 9R-27L)	10-28	ALL 254.4

RADAR REQUIRED



CATEGORY	A	B	C	D	5.1 NM from FAF
S-ILS 9R	1226/18		200 (200-½)		
S-LOC 9R	1480/24	454 (500-½)	1480/45	454 (500-¾)	FAF to MAP 5.1 NM
SIDESTEP 9L	1480/55 461 (500-1)		1480-1½ 461 (500-½)		

ATLANTA, GEORGIA
Amdt 19 18SEP14

HARTSFIELD-JACKSON ATLANTA INTL (ATL)
33°38'N-84°26'W

ILS or LOC RWY 9R

SE-4, 10 OCT 2019 to 07 NOV 2019

SE-4, 10 OCT 2019 to 07 NOV 2019