

ATLANTA, GEORGIA

AL-26 (FAA)

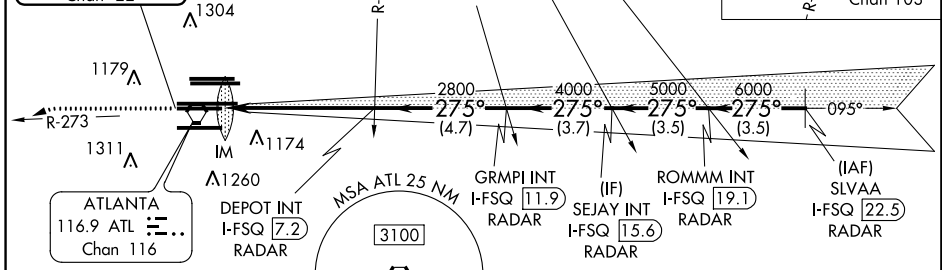
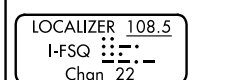
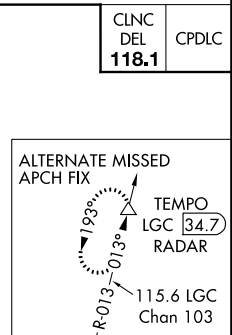
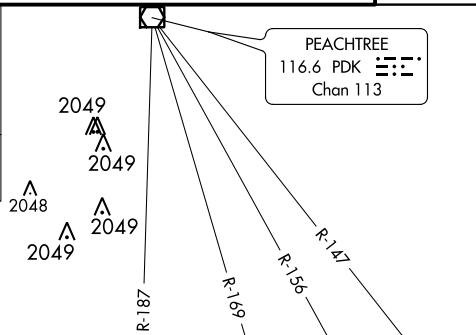
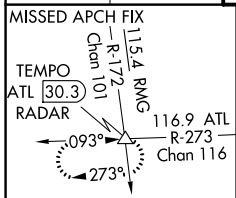
# ILS PRM RWY 27L (CAT II) (SIMULTANEOUS CLOSE PARALLEL) HARTSFIELD-JACKSON ATLANTA INTL (ATL)

LOC/DME I-FSQ <b>108.5</b> Chan <b>22</b>	APP CRS <b>275°</b>	Rwy Idg TDZE Apt Elev	<b>8865</b> <b>999</b> <b>1026</b>
---	------------------------	-----------------------------	--

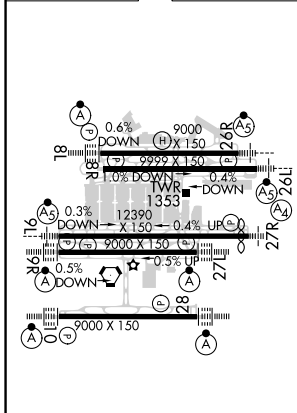
Simultaneous close parallel approach authorized with ILS PRM and RNAV PRM Rwy 26R or 26L or 28, or Rwy 26R and 28, or Rwy 26L and 28. Procedure not authorized when glideslope not available. Dual VHF comm required. See additional requirements on AAUP.

ALSF-2  
MISSED APPROACH: Climb to 1400 then climbing left turn to 4000 on ATL VORTAC R-273 to TEMPO INT/ATL 30.3 DME and hold.

D-ATIS ARR <b>119.65</b> DEP <b>125.55</b>	ATLANTA APP CON <b>127.9 379.9</b>	ATLANTA TOWER 8L-26R 8R-26L 9L-27R 9R-27L 10-28 RWYS <b>119.1 125.325 123.85 119.3 119.5 254.4</b> PRM <b>132.55</b>	ALL RWYS (8L-26R,8R-26L) (9L-27R,9R-27L) 10-28 <b>121.9 121.75 121.65 254.4</b>	GND CON <b>121.75</b>	ALL RWYS <b>121.65 254.4</b>
--	---------------------------------------	---	---	--------------------------	---------------------------------



ELEV <b>1026</b>	<b>D</b>	TDZE <b>999</b>
------------------	----------	-----------------



### RADAR REQUIRED

1400	4000	TEMPO	VGSI and ILS glidepath not coincident (VGSI Angle 3.00/TCH 79).	SLVAA I-FSQ [22.5] RADAR
ATL R-273			SEJAY INT I-FSQ [15.6] RADAR	ROMMM INT I-FSQ [19.1] RADAR
	DEPOT INT I-FSQ [7.2] RADAR	GRMPI INT I-FSQ [11.9] RADAR		
			275°	7000
	IM	2800	4000	5000
			6000	
				GS 3.00° TCH 58
	1025	5.5 NM	4.7 NM	3.7 NM
			3.5 NM	3.5 NM
CATEGORY	A	B	C	D
S-ILS 27L	RA 127/12 100 DA 1099			

HIRL all Rwy's  
TDZ/CL Rwy's 8L, 9R, 10, 26R, 27L and 28

**CATEGORY II ILS- SPECIAL AIRCREW & AIRCRAFT CERTIFICATION REQUIRED**

ATLANTA, GEORGIA Amdt 3A 15OCT15 33°38'N-84°26'W HARTSFIELD-JACKSON ATLANTA INTL (ATL)

## ILS PRM RWY 27L (CAT II) (SIMULTANEOUS CLOSE PARALLEL)

SE-4, 10 OCT 2019 to 07 NOV 2019

SE-4, 10 OCT 2019 to 07 NOV 2019