

ILS PRM RWY 28 (SA CAT I) (SIMULTANEOUS CLOSE PARALLEL) HARTSFIELD-JACKSON ATLANTA INTL (ATL)

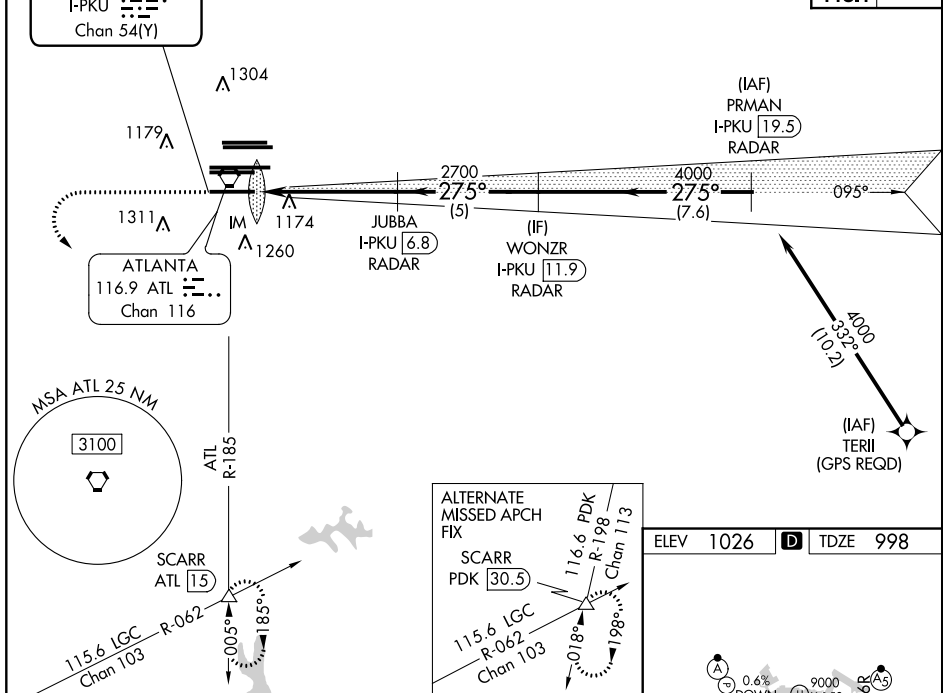
LOC/DME I-PKU 111.75 Chan 54 (Y)	APP CRS 275°	Rwy Idg TDZE Apt Elev 9000 998 1026
--	------------------------	---

Simultaneous close parallel approach authorized with ILS PRM and RNAV PRM Rwy 26R or 26L or 27R or 27L or Rwy 26R and 27R, or Rwy 26R and 27L, or Rwy 26L and 27R, or Rwy 26L and 27L. Procedure not authorized when glideslope not available. Dual VHF comm required. See additional requirements on AAUP. Requires specific OPSPEC, MSPEC, or LOA approval and use of HUD to DH.

ALSIF-2 	MISSED APPROACH: Climb to 1400 then climbing left turn to 3000 on ATL VORTAC R-185 to SCARR INT/ATL 15 DME and hold.
-------------	--

D-ATIS ARR 119.65 DEP 125.55	ATLANTA APP CON 127.9 379.9	ATLANTA TOWER ALL 8L-26R 8R-26L 9L-27R 9R-27L 10-28 RWYS 119.1 125.325 123.85 119.3 119.5 254.4 PRM 133.425	GND CON ALL (8L-26R,8R-26L) (9L-27R,9R-27L) 10-28 RWYS 121.9 121.75 121.65 254.4
--	---------------------------------------	--	---

LOCALIZER 111.75 I-PKU Chan 54(Y)	A₂₀₄₉ GPS or RADAR REQUIRED	CLNC DEL 118.1	CPDLC
---	---	--------------------------	-------



ELEV 1026	TDZE 998
-----------	----------

CATEGORY	A	B	C	D
S-ILS 28	RA 264/14		150 DA 1148	
SA CATEGORY I ILS - SPECIAL AIRCREW & AIRCRAFT CERTIFICATION REQUIRED				

HIRL all Rwy
TDZ/CL Rwy 8L, 9R,
10, 26R, 27L and 28

SE-4, 10 OCT 2019 to 07 NOV 2019

SE-4, 10 OCT 2019 to 07 NOV 2019