

OZZI ONE ARRIVAL (RNAV) Transition Routes

SE-4, 10 OCT 2019 to 07 NOV 2019

D-ATIS ARR
119.65
ATLANTA APP CON
128.525 379.9

DGESS TRANSITION (DGESS.OZZI1): For GSP
departures or assigned by ATC only.
FLASK TRANSITION (FLASK.OZZI1)
LEAVI TRANSITION (LEAVI.OZZI1)
MHONY TRANSITION (MHONY.OZZI1): For AVL
departures or assigned by ATC only.
WINING TRANSITION (WINING.OZZI1)

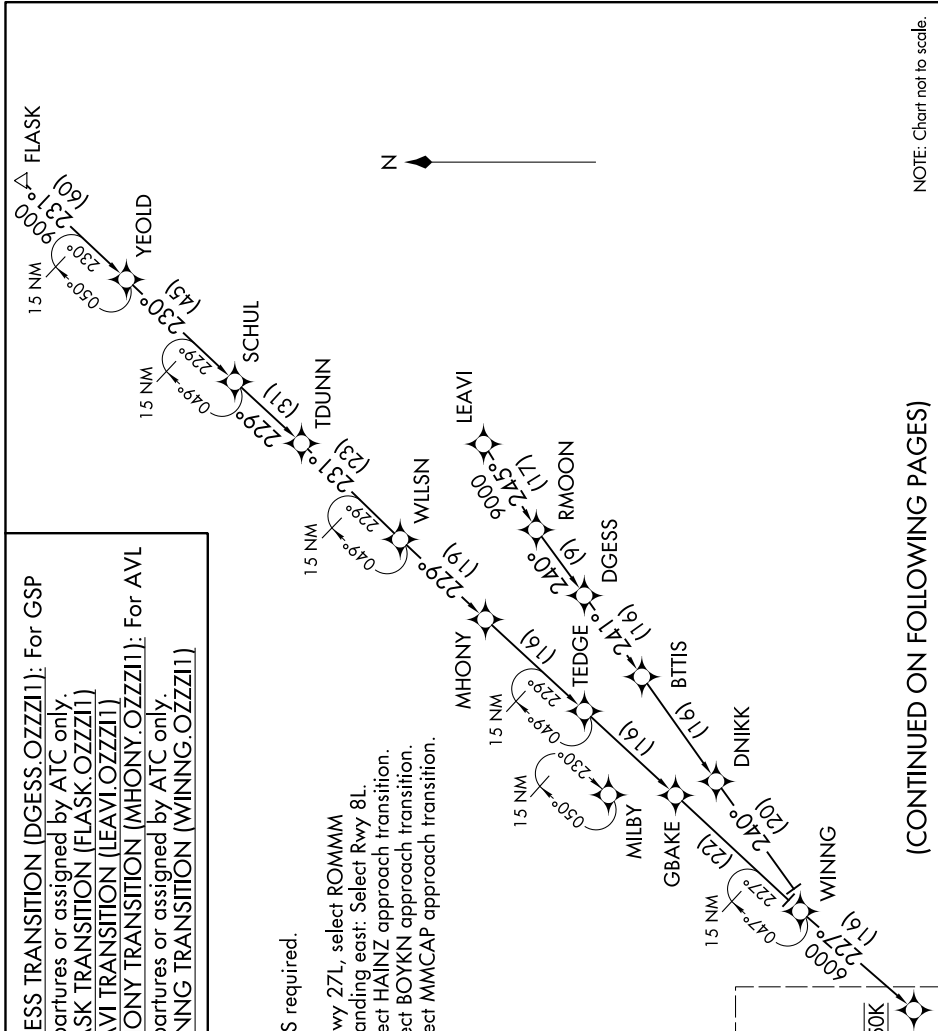
- NOTE: RADAR required.
- NOTE: RNAV 1.
- NOTE: DME/DME/IRU or GPS required.
- NOTE: Turbojet aircraft only.
- NOTE: Landing west: Select Rwy 27L, select ROMMM approach transition; Landing east: Select Rwy 8L.
- NOTE: Landing Rwy 26R: Select HAINZ approach transition.
- NOTE: Landing Rwy 26L: Select BOYKN approach transition.
- NOTE: Landing Rwy 27R: Select MMCAP approach transition.

See following page for Arrival Routes.

OZZI

Landing East: Expect 14000

Landing West: Expect 12000 and 250K



NOTE: Chart not to scale.

(CONTINUED ON FOLLOWING PAGES)

SE-4, 10 OCT 2019 to 07 NOV 2019

OZZI ONE ARRIVAL (RNAV) Transition Routes