

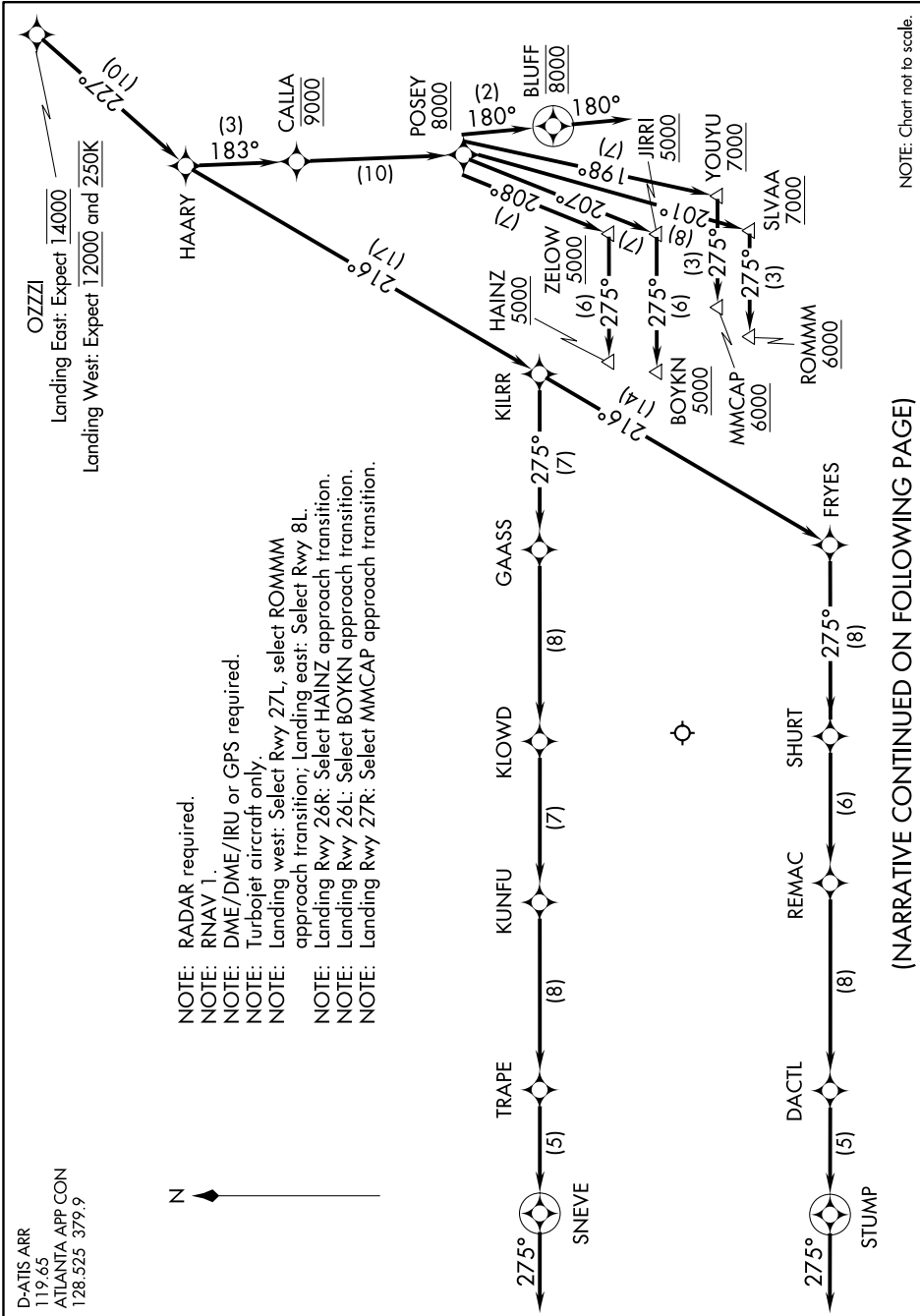
OZZI ONE ARRIVAL (RNAV) Arrival Routes

SE-4, 10 OCT 2019 to 07 NOV 2019

D-ATIS ARR
119.65
ATLANTA APP CON
128.525 379.9



- NOTE: RADAR required.
- NOTE: RNAV 1.
- NOTE: DME/DME/IRU or GPS required.
- NOTE: Turbojet aircraft only.
- NOTE: Landing west: Select Rwy 27L, select ROMMM approach transition; Landing east: Select Rwy 8L approach transition; Landing east: Select ROMMM approach transition.
- NOTE: Landing Rwy 26R: Select HAINZ approach transition.
- NOTE: Landing Rwy 26L: Select BOYKN approach transition.
- NOTE: Landing Rwy 27R: Select MMCAP approach transition.



NOTE: Chart not to scale.

(NARRATIVE CONTINUED ON FOLLOWING PAGE)

SE-4, 10 OCT 2019 to 07 NOV 2019