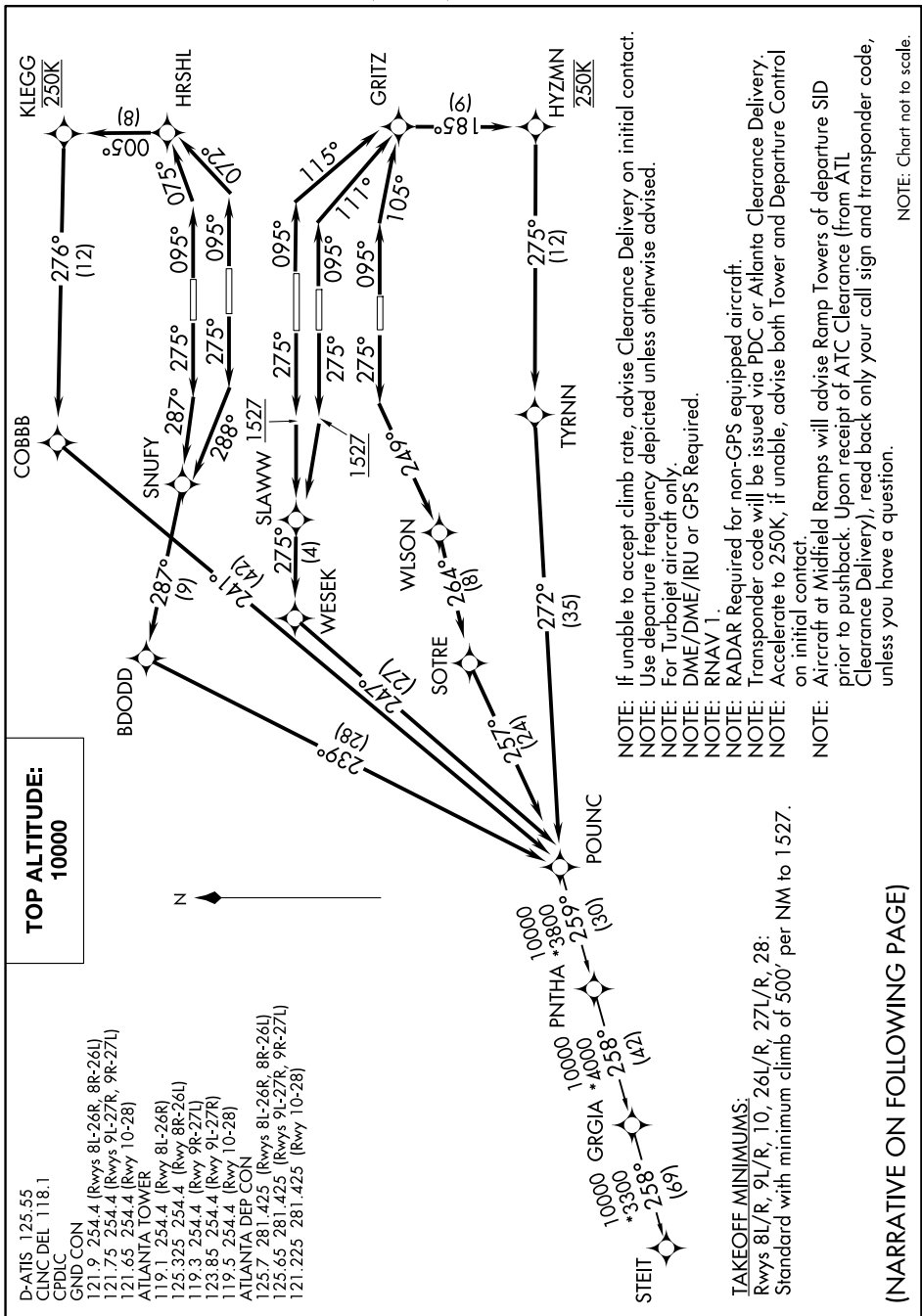


POUNC TWO DEPARTURE(RNAV)

SE-4, 10 OCT 2019 to 07 NOV 2019



TOP ALTITUDE:
10000

- D-ATIS 125.55
- CLNC DEL 118.1
- CPDIC
- GND CON
- 121.9 254.4 (Rwys 8L-26R, 8R-26L)
- 121.75 254.4 (Rwys 9L-27R, 9R-27L)
- 121.65 254.4 (Rwy 10-28)
- ATLANTA TOWER
- 119.1 254.4 (Rwy 8L-26R)
- 125.325 254.4 (Rwys 8R-26L)
- 119.3 254.4 (Rwy 9R-27L)
- 123.85 254.4 (Rwy 9L-27R)
- 119.5 254.4 (Rwy 10-28)
- ATLANTA DEP CON
- 125.7 281.425 (Rwys 8L-26R, 8R-26L)
- 125.65 281.425 (Rwys 9L-27R, 9R-27L)
- 121.225 281.425 (Rwy 10-28)

- NOTE: If unable to accept climb rate, advise Clearance Delivery on initial contact.
- NOTE: Use departure frequency depicted unless otherwise advised.
- NOTE: For Turbojet aircraft only.
- NOTE: DME/DME/IRU or GPS Required.
- NOTE: RNAV 1
- NOTE: RADAR Required for non-GPS equipped aircraft.
- NOTE: Transponder code will be issued via PDC or Atlanta Clearance Delivery.
- NOTE: Accelerate to 250K, if unable, advise both Tower and Departure Control on initial contact.
- NOTE: Aircraft at Midfield Ramps will advise Ramp Towers of departure SID prior to pushback. Upon receipt of ATC Clearance (from ATL Clearance Delivery), read back only your call sign and transponder code, unless you have a question.

TAKEOFF MINIMUMS:
Rwys 8L/R, 9L/R, 10, 26L/R, 27L/R, 28:
Standard with minimum climb of 500' per NM to 1527.

(NARRATIVE ON FOLLOWING PAGE)

NOTE: Chart not to scale.

SE-4, 10 OCT 2019 to 07 NOV 2019