

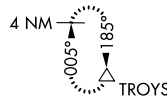
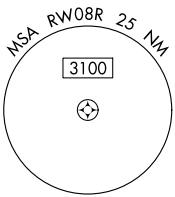
WAAS CH <b>48800</b> <b>W08D</b>	APP CRS <b>095°</b>	Rwy Idg TDZE <b>1024</b> Apt Elev <b>1026</b>	<b>9999</b>
--	------------------------	---	-------------

# RNAV (GPS) RWY 8R

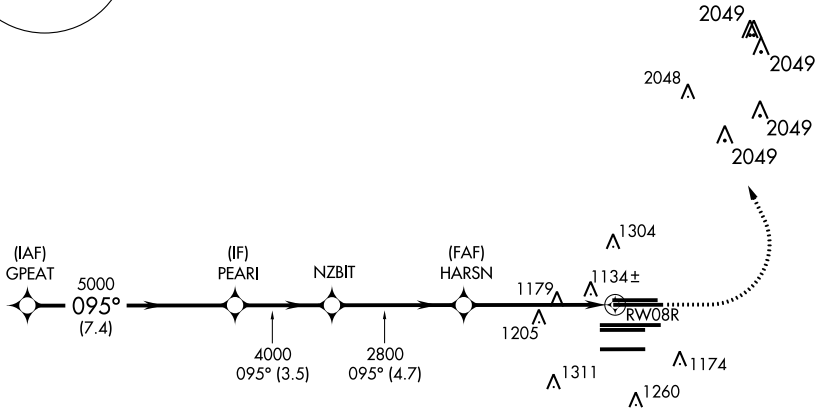
HARTSFIELD-JACKSON ATLANTA INTL (ATL)

RNP APCH.	For uncompensated Baro-VNAV systems, LNAV/VNAV NA below -7°C, or above 54°C. Simultaneous approach authorized with Rwy 9L or 9R or 10. LNAV procedure NA during simultaneous operations. Use of FD or AP providing RNAV track guidance required during simultaneous operations.	MISSED APPROACH: Climb to 1500 then climbing left turn to 3500 direct TROYS and hold.
-----------	---	---

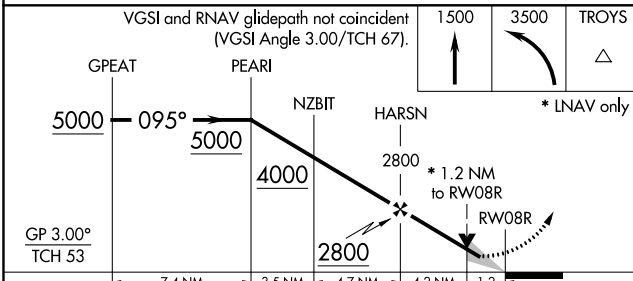
D-ATIS ARR <b>119.65</b> DEP <b>125.55</b>	ATLANTA APP CON <b>127.9 379.9</b>	ATLANTA TOWER 8L-26R 8R-26L 9L-27R 9R-27L 10-28 RWYS <b>119.1 125.325 123.85 119.3 119.5 254.4</b> PRM <b>126.9</b>	ALL RWYS <b>121.9</b>	GND CON (8L-26R,8R-26L) (9L-27R,9R-27L) 10-28 <b>121.75 121.65 254.4</b>	ALL RWYS
--	--	--	-----------------------------	--	-------------



CLNC DEL <b>118.1</b>	CPDLC
-----------------------------	-------

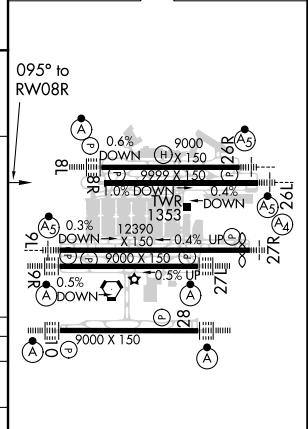


## RADAR REQUIRED



CATEGORY	A	B	C	D
LPV DA		1282/40	258 (300-¾)	
LNAV/VNAV DA		1516-1⅓	492 (500-1⅓)	
LNAV MDA	1480/55	456 (500-1)	1480-1⅓	456 (500-1⅓)

ELEV 1026	<b>D</b> TDZE 1024
-----------	--------------------



HIRL all Rwws  
TDZ/CL Rwws 8L, 9R,  
10, 26R, 27L and 28

SE-4, 10 OCT 2019 to 07 NOV 2019

SE-4, 10 OCT 2019 to 07 NOV 2019