

WAAS CH 97400 W09B	APP CRS 095°	Rwy Idg TDZE Apt Elev	9000 1026 1026
--	------------------------	-----------------------------	---

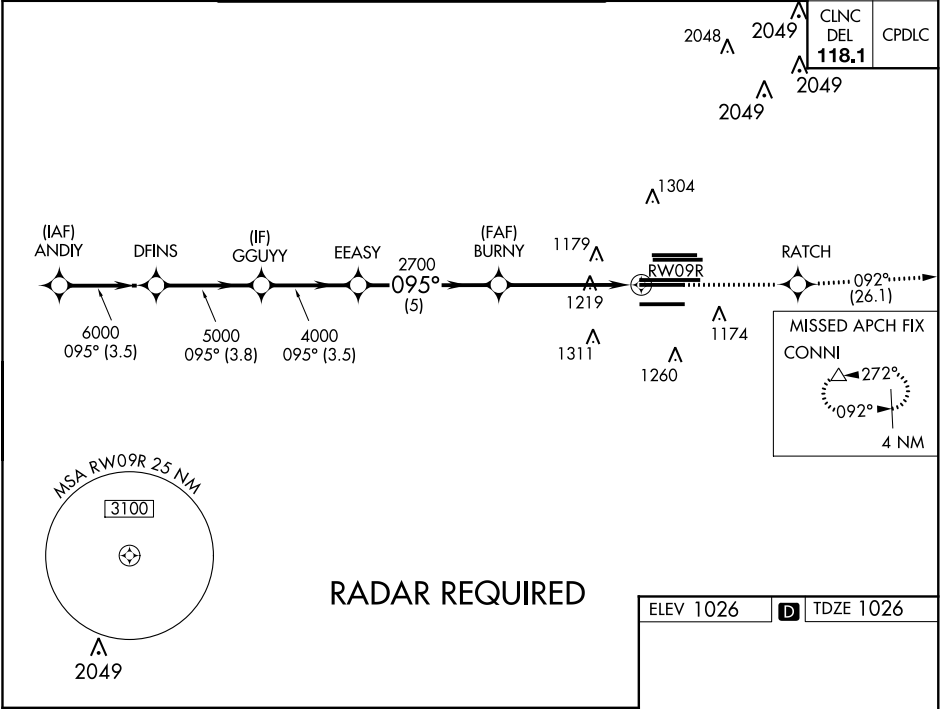
RNAV (GPS) RWY 9R

HARTSFIELD-JACKSON ATLANTA INTL (ATL)

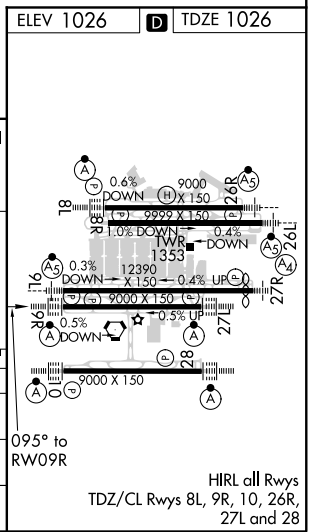
▽ For uncompensated Baro-VNAV systems, LNAV/VNAV NA below -7°C (20°F) or above 54°C (130°F). DME/DME RNP-0.3 NA. Simultaneous approach authorized with Rwy 8L or 8R. LNAV procedure NA during simultaneous operations. Use of FD or AP providing RNAV track guidance required during simultaneous operations.

ALSF-2
 MISSED APPROACH: Climb to 4000 direct RATCH and on track 092° to CONNI and hold.

D-ATIS ARR 119.65	ATLANTA APP CON	ATLANTA TOWER					ALL RWYS	GND CON	ALL RWYS		
DEP 125.55	127.9 379.9	119.1	125.325	123.85	119.3	119.5	254.4	121.9	121.75	121.65	254.4



VGSi and RNAV glidepath not coincident (VGSi Angle 3.00/TCH 70).		4000	RATCH	tr 092°	CONNI
ANDIY	DFINS	GGUYY	EEASY	BURNY	RW09R
7000	6000	5000	4000	2700	2700
GP 3.00° TCH 56	*LNAV only.				
	3.5 NM	3.8 NM	3.5 NM	5 NM	3.9 NM
CATEGORY	A	B	C	D	
LPV DA	1226/18		200 (200-½)		
LNAV/VNAV DA	1403/40		377 (500-¾)		
LNAV MDA	1480/24	454 (500-½)	1480/45	454 (500-¾)	



SE-4, 10 OCT 2019 to 07 NOV 2019

SE-4, 10 OCT 2019 to 07 NOV 2019