

RNAV (GPS) PRM RWY 26L (SIMULTANEOUS CLOSE PARALLEL) HARTSFIELD-JACKSON ATLANTA INTL (ATL)

| | | | |
|--|------------------------|--|-------------|
| WAAS CH 56300 W26A | APP CRS 275° | Rwy Idg TDZE 996 Apt Elev 1026 | 9999 |
|--|------------------------|--|-------------|

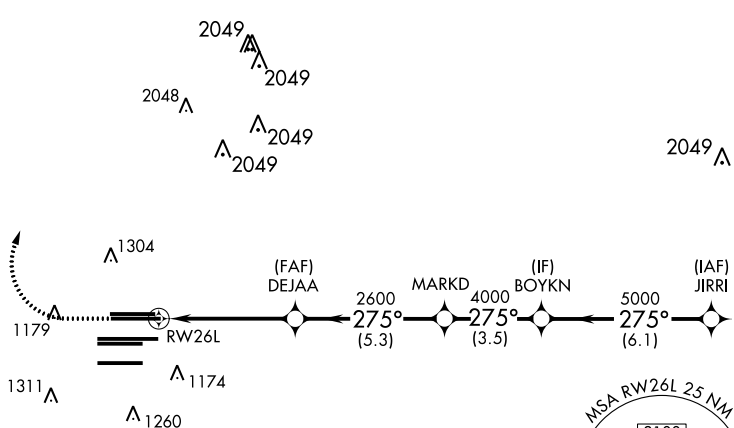
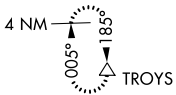
▼ For uncompensated Baro-VNAV systems, LNAV/VNAV NA below -7°C (20°F) or above 54°C (130°F). DME/DME RNP-0.3 NA. For inop MALSR, increase LPV all Cats visibility to RVR 4500 and LNAV/VNAV all Cats visibility to RVR 6000. Simultaneous close parallel approach authorized with ILS PRM and RNAV PRM Rwy 27R or 27L or 28, or Rwys 27R and 28, or Rwys 27L and 28. Dual VHF Comm required. Use of FD or AP providing RNAV track guidance required during simultaneous operations. See additional requirements on AAUP.



MISSED APPROACH:
Climb to 1500 then climbing right turn to 3500 direct TROYS and hold.

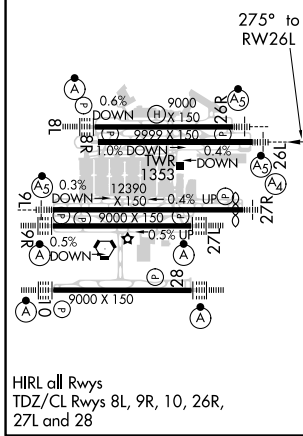
| | | | |
|--|---------------------------------------|---|---|
| D-ATIS ARR 119.65 DEP 125.55 | ATLANTA APP CON 127.9 379.9 | ATLANTA TOWER ALL RWYS 8L-26R 119.1 8R-26L 125.325 9L-27R 123.85 9R-27L 119.3 10-28 119.5 254.4 PRM 126.9 | GND CON ALL RWYS (8L-26R,8R-26L) 121.9 (9L-27R,9R-27L) 121.75 10-28 121.65 254.4 |
|--|---------------------------------------|---|---|

| | |
|--------------|-------|
| CLNC DEL | CPDLC |
| 118.1 | |



| | | |
|-----------|----------|----------|
| ELEV 1026 | D | TDZE 996 |
|-----------|----------|----------|

RADAR REQUIRED



| | | | | |
|-----------------|------|---------|--|--------|
| 1500 | 3500 | TROYS | VGSi and RNAV glidepath not coincident (VGSi Angle 3.00/TCH 63). | |
| | | | MARKD | BOYKN |
| | | | DEJAA | JIRRI |
| | | | 2600 | 5000 |
| | | | 4000 | 5000 |
| | | | 2600 | 5000 |
| | | | 4.9 NM | 5.3 NM |
| | | | 3.5 NM | 6.1 NM |
| GP 3.00° TCH 52 | | | | |
| CATEGORY | A | B | C | D |
| LPV DA | | 1281/24 | 285 (300-½) | |
| LNAV/VNAV DA | | 1360/35 | 364 (400-½) | |

RNAV (GPS) PRM RWY 26L (SIMULTANEOUS CLOSE PARALLEL)

SE-4, 10 OCT 2019 to 07 NOV 2019

SE-4, 10 OCT 2019 to 07 NOV 2019