

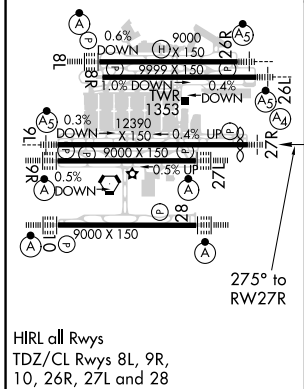
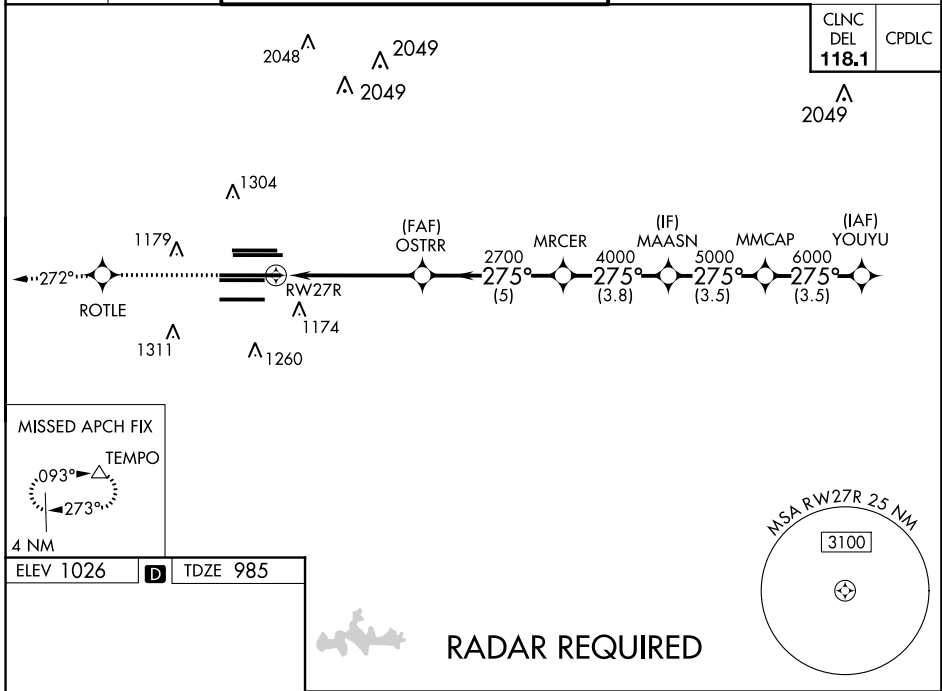
# RNAV (GPS) PRM RWY 27R (SIMULTANEOUS CLOSE PARALLEL) HARTSFIELD-JACKSON ATLANTA INTL (ATL)

WAAS CH <b>70400</b> <b>W27B</b>	APP CRS <b>275°</b>	Rwy Idg <b>11690</b> TDZE <b>985</b> Apt Elev <b>1026</b>
--	------------------------	---

▼ For uncompensated Baro-VNAV systems, LNAV/VNAV NA below -7°C (20°F) or above 54°C (130°F). DME/DME RNP-0.3 NA. Simultaneous close parallel approach authorized with ILS PRM and RNAV PRM Rwy 26R or 26L or 28, or Rwys 26R and 28, or Rwys 26L and 28. Dual VHF Comm required. Use of FD or AP providing RNAV track guidance required during simultaneous operations. See additional requirements on AAUP. For inop MALS, increase LNAV/VNAV Cat D visibility to 1½ miles. Inop table does not apply to LPV, all Cats.

MALS 	MISSED APPROACH: Climb to 4000 direct ROTLE and on track 272° to TEMPO and hold.
----------	--

D-ATIS ARR <b>119.65</b> DEP <b>125.55</b>	ATLANTA APP CON <b>127.9 379.9</b>	ATLANTA TOWER 8L-26R <b>119.1</b> 8R-26L <b>125.325</b> 9L-27R <b>123.85</b> 9R-27L <b>119.3</b> 10-28 RWYS <b>119.3</b> ALL <b>119.5</b>	ALL RWYS 10-28 <b>125.4</b>	GND CON 8L-26R,8R-26L <b>121.9</b> 9L-27R,9R-27L <b>121.75</b> 10-28 <b>121.65</b> ALL RWYS <b>254.4</b>
--	---------------------------------------	--	--------------------------------	---



RADAR REQUIRED			
4000	ROTTLE 	TEMPO tr 272°	VGSI and RNAV glidepath not coincident (VGSI Angle 3.00/TCH 72).
			YOUYOU 7000
RW27R	OSTRR 2700	MRCER 4000	MAASN 5000
			MMCAP 6000
			YOUYOU 7000
			GP 3.00° TCH 56
	5.2 NM	5 NM	3.8 NM
		3.5 NM	3.5 NM
CATEGORY	A	B	C
LPV DA	1185/40 200 (200-¾)		
LNAV/VNAV DA	1461-1¾ 476 (500-1¾)		

# RNAV (GPS) PRM RWY 27R (SIMULTANEOUS CLOSE PARALLEL)

SE-4, 10 OCT 2019 to 07 NOV 2019

SE-4, 10 OCT 2019 to 07 NOV 2019